



Weekly fuel price monitoring report

Friday 27 March 2026

Key messages

The ACCC has increased its monitoring of the fuel industry. This is our third weekly report with the latest ACCC fuel related activities, the latest movements in crude oil, international refined fuel benchmarks, and domestic wholesale and retail fuel prices around Australia.

Key points from this report include:

- The ACCC continues to engage with the fuel industry, state and territory regulators, and consumers to monitor fuel market volatility and supply disruptions linked to the Middle East conflict.
- We have received a surge of reports from consumers, largely raising concerns about fuel price increases, shortages in supply and high prices. From 1 March to 24 March, we received over 3,000 fuel contacts through the ACCC's Infocentre. This is a large increase in the number of fuel related complaints.
- The ACCC granted urgent interim authorisation, with conditions, to the Australian Institute of Petroleum and its current members (Ampol, bp, Mobil and Viva Energy) to coordinate, as needed, to manage supply chain issues, including to aid supply in regional areas. The ACCC is currently consulting on the application.
- International refined fuel prices continued to trend higher, particularly for refined diesel. The benchmark for refined diesel (Singapore Gasoil 10 ppm) has risen further, up around 17% from the previous week. Tighter supply in the region is affecting refined fuel prices, as some Asian countries banned or restricted fuel exports and refineries cut output.
- Ampol announced it has deferred a scheduled maintenance program at its Lytton refinery in Brisbane until the start of August 2026, enabling continued domestic production of petrol, diesel and jet fuel.
- International oil and refined fuel prices have increased further over the past week in response to the continuing global supply shock. Over the past week, international benchmark prices increased for refined petrol (Singapore Mogas 95) by around 9%.
- Retail petrol and diesel prices also increased over the last week. The size of the retail price increases over the last week were smaller than the initial sharp increases.
 - On 25 March, Hobart had the highest daily average retail **petrol** prices among the 8 cities (257.2 cpl), and Brisbane had the lowest (250.3 cpl). From the previous week, Hobart experienced the largest increase in average prices (22.0 cpl).
 - On 25 March, Canberra had the highest daily average retail **diesel** prices among the 8 cities (306.0 cpl), and Perth had the lowest (300.3 cpl). From the previous week, Brisbane experienced the largest increase in average prices (29.1 cpl).
- Retail petrol and diesel prices continued to move higher in regional locations across Australia. Various factors may be influencing regions to a different extent, including local supply stability, shortages in areas and unexpected demand.

The ACCC is engaging with consumers, governments and industry

The ACCC receives information and contacts from consumers on a wide range of issues. We have seen a surge of contacts on fuel related issues in March, with over 3,000 fuel related reports received through our Infocentre as at 24 March. Fuel related contacts made up nearly a third of all contacts received in March, with reports peaking in the second week of March.

Reports have raised a variety of issues, including multiple price rises in the same day in some jurisdictions, large jumps in fuel prices overnight and some service stations either setting volume limits on fuel or running out of fuel completely.

The ACCC understands the pressure on consumers in these very challenging times. We have been engaging with relevant state and territory consumer law regulators to share information and coordinate action to assist consumers. We are also engaging with Commonwealth, state and territory bodies, including coordinating bodies, to provide relevant information and our sector insights to assist in their decision making.

On 20 March, the ACCC granted urgent interim authorisation, subject to conditions, to the Australian Institute of Petroleum (AIP) and its current members (Ampol, bp, Mobil and Viva Energy) to discuss and implement measures aimed at mitigating potential risks to the supply of petroleum products (including diesel, unleaded petrol motor fuels, and aviation fuel) across Australia. We are aware of the ongoing concerns about diesel availability in regional and rural Australia and the impacts on residents, businesses and primary producers.

The ACCC is continuing its assessment regarding AIP's request to grant final authorisation for a period of 12 months and is yet to make a final determination. Public consultation on the application is ongoing and we request interested parties make their submission by 14 April 2026.

Further information about this authorisation process is available on the ACCC's website at [Authorisations register – Australian Institute of Petroleum and Ors](#).

Industry developments to support supply

On 24 March, the Australian Government announced a temporary 6-month adjustment to diesel standards. The adjustment will lower the flashpoint¹ for diesel from 61.5 to 60.5 degrees Celsius, increasing diesel supply options from refiners and international sources.² This follows the government's earlier decision to release up to 20% of Australia's domestic fuel reserves for petrol and diesel from the Minimum Stockholding Obligation.³

On 20 March, Ampol announced it has deferred its scheduled Lytton refinery major maintenance program from early June to the start of August 2026, enabling domestic production during this period of approximately 300 million litres of petrol, diesel and jet fuel (in aggregate).⁴ This came as the Australian Government announced that it had completed a

¹ Flashpoint refers to the lowest temperature at which fuel can ignite.

² Minister for Climate Change and Energy, The Hon Chris Bowen MP, [Further adjustments to get more diesel flowing](#), 24 March 2026, accessed on 26 March 2026.

³ Minister for Climate Change and Energy, The Hon Chris Bowen MP, [More fuel for regional Australians](#), 13 March 2026, accessed on 26 March 2026.

⁴ Ampol, [Updates on FSSP Phase 1 Review and Current Fuel Supply Chain](#), 20 March 2026, accessed on 26 March 2026.

review and amended the Fuel Security Services Payment to make it more available to domestic refineries.⁵

In 2025, Viva Energy's refinery in Geelong and Ampol's refinery in Brisbane produced 12 billion litres of petrol, diesel and jet fuel, or about 20% of Australia's annual needs.⁶

International prices continued to be volatile and were higher on average over the past week

Australian retail fuel prices are largely determined by movements in international benchmark refined fuel prices (which are driven by international crude oil prices), and the AUD-USD exchange rate.

International benchmark prices movements drive domestic wholesale prices, which then influence retail fuel prices.

Additionally, in the 5 largest cities (Sydney, Melbourne, Brisbane, Adelaide and Perth), retail petrol prices have typically moved up and down in regular patterns, known as petrol price cycles. The ACCC petrol price cycles web page has more information on these price cycles: <https://www.accc.gov.au/consumers/petrol-and-fuel/petrol-price-cycles-in-the-5-largest-cities>. Retail diesel prices do not move in cycles.

On 20 February, Australian average wholesale (terminal gate) petrol and diesel prices started edging up from the relatively stable levels that had been observed since the start of 2026. On 28 February, conflict escalated between the United States, Israel and Iran.

*The international benchmark price for refined fuel is the largest component of retail fuel prices. The international benchmark for Australian retail **petrol** prices is Singapore Mogas 95 (**Mogas 95**).*

*The international benchmark for Australian retail **diesel** prices is Singapore Gasoil with 10 parts per million sulphur content (**Gasoil 10 ppm**).*

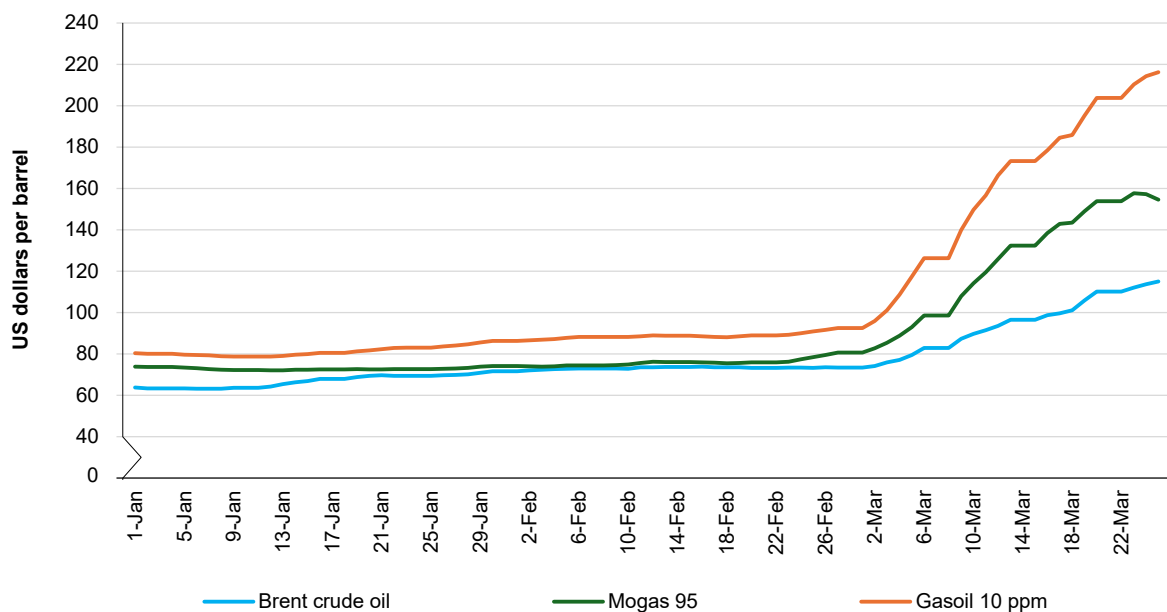
Both petrol and diesel are refined from crude oil and their prices generally tend to follow similar movements over the long term. However, the different fuels have their own supply and demand characteristics (for example, compared with petrol, diesel also has remote energy generation and industrial uses) and the different refined fuels have their own international benchmark prices. It is these benchmarks that drive retail diesel and retail petrol prices.

The following figure shows the movements of weekly average international crude oil and refined fuel benchmark prices between 1 January and 25 March 2026. Day-to-day international price movements continue to be volatile. Over the last week, there were both daily increases and decreases in international prices.

⁵ This is a production payment to refiners during loss-making periods based on the number of litres of eligible fuels they produce.

⁶ Minister for Climate Change and Energy, the Hon Chris Bowen MP, [Securing Australia's fuel sovereignty](#), 20 March 2026, accessed on 26 March 2026.

Figure 1 – Weekly average international crude oil and refined fuel benchmark prices



Source: ACCC calculations based on data from Argus Media.

The following table shows movements in weekly average crude oil, and international refined petrol (Mogas 95) and refined diesel (Gasoil 10 ppm) benchmark prices from the week to 20 February to the week to 25 March 2026.

Table 1 – Weekly average international crude oil and refined fuel benchmark prices

	Brent crude oil USD per barrel	Brent crude oil A cpl	Mogas 95 USD per barrel	Mogas 95 A cpl	Gasoil 10 ppm USD per barrel	Gasoil 10 ppm A cpl
Week to 20-Feb	73	65	76	68	89	79
Week to 18-Mar	101	90	143	127	186	165
Week to 25-Mar	115	103	155	138	216	193
Change 20-Feb to 25-Mar	42	38	79	70	127	114
Change from previous week	14	13	12	11	30	28

Source: ACCC calculations based on data from Argus Media and the Reserve Bank of Australia.

Notes: 'USD' means United States dollars.

'A cpl' means Australian cents per litre.

In the week to 25 March, weekly average Mogas 95 prices, in Australian cents per litre, were around 138 cpl, an increase of around 11 cpl from the previous week.

In the week to 25 March, weekly average Gasoil 10 ppm prices, in Australian cents per litre, were around 193 cpl, an increase of around 28 cpl from the previous week.

Refined diesel prices continued to increase at a greater pace than refined petrol prices. Refined diesel (Gasoil 10 ppm) benchmark prices (on a weekly average basis in Australian cents per litre) increased by around 17% from the previous week, whereas refined petrol (Mogas 95) prices increased by around 9%. The continued increase in both refined diesel

and refined petrol prices in the region this week was influenced by tighter supply as some Asian countries banned or restricted fuel exports and refineries cut output.⁷

Ampol recently noted that the Asian refining system, which largely relies on the type of crude oil supplied from the Middle East, is an important source for imports of refined fuel products (such as petrol, diesel and jet fuel) into Australia and New Zealand.⁸

Ampol also noted that its Lytton refinery processes a different grade of crude oil (known as 'light sweet' crude) to that sourced from the Middle East (referred to as 'sour' crudes), and therefore suitable crudes remain available in market.

Petrol prices moved higher in capital cities

Terminal gate prices are prices that wholesalers charge for petrol and diesel in the spot market. The major wholesalers post these prices on their websites on a regular basis. Although few wholesale transactions occur at terminal gate prices and actual costs can vary across brands and cities, they are typically indicative of average wholesale prices. Terminal gate prices are indicative of the wholesale price of petrol or diesel only, and exclude transport and other retail operating costs.

Note on terminal gate prices in the current environment

Over many years the ACCC has used terminal gate prices as a transparent and timely proxy for general movements in wholesale prices over time. The Australian Institute of Petroleum (AIP) issued a statement on 11 March about fuel supply in Australia, which noted that AIP members have been hit by a sudden rush of demand for fuel, and members have had to prioritise supply to their regular customers and cease spot sales.⁹ Given this, it is likely there have been fewer than normal transactions at or near terminal gate prices since the supply disruptions. The ACCC also heard from market participants at its meeting with industry on 17 March, that some transactions have been at quite different prices to published terminal gate prices.

The following tables show movements in average terminal gate and retail petrol prices in Australia's capital cities, from 20 February to 25 March 2026.

⁷ Reuters, [European gasoline heads to Asia as Iran war sparks supply fears](#), 23 March 2026 and Reuters, [China's fuel export ban to further tighten Asia supply](#), 17 March 2026, accessed on 26 March 2026.

⁸ Ampol, [Updates on Phase 1 Review of FSSP and Current Fuel Supply Chain](#), 20 March 2026, accessed on 26 March 2026.

⁹ Australian Institute of Petroleum, [AIP Statement on fuel supply in Australia](#), media release, 11 March 2026, accessed on 26 March 2026.

Table 2 – Daily average terminal gate prices for regular unleaded petrol – cents per litre

	Sydney	Melbourne	Brisbane	Adelaide	Perth	Canberra	Hobart	Darwin
20-Feb	151.5	152.1	152.1	151.8	152.0	151.5	155.5	156.3
18-Mar	229.5	230.7	230.1	230.0	230.8	229.5	229.5	234.7
25-Mar	247.7	248.5	248.5	248.5	248.8	247.7	247.4	252.8
Change 20-Feb to 25-Mar	96.2	96.4	96.4	96.7	96.8	96.2	91.9	96.5
Change from previous week	18.2	17.8	18.4	18.5	18.0	18.2	17.9	18.1

Source: ACCC calculations based on data published on the Australian Institute of Petroleum website.

Note: Sydney terminal gate prices are used as a proxy for Canberra.

Across the 5 largest cities, average terminal gate prices on 25 March were 248.4 cpl, an increase of 18.2 cpl from the previous week.

Table 3 – Daily average retail regular unleaded petrol prices – cents per litre

	Sydney	Melbourne	Brisbane	Adelaide	Perth	Canberra	Hobart	Darwin
20-Feb	165.2	176.1	188.8	161.3	163.3	181.2	165.0	177.1
18-Mar	231.3	233.1	230.8	235.1	240.1	232.0	235.2	239.7
25-Mar	250.5	250.8	250.3	252.4	257.0	251.4	257.2	255.2
Change 20-Feb to 25-Mar	85.3	74.7	61.5	91.1	93.7	70.2	92.2	78.1
Change from previous week	19.2	17.7	19.5	17.3	16.9	19.4	22.0	15.5

Source: ACCC calculations based on data from Informed Sources.

Across the 5 largest cities, daily average retail petrol prices on 25 March were 252.2 cpl, an increase of 18.1 cpl from the previous week. The weekly change in retail petrol prices across the 5 largest cities was similar to the change in average terminal gate prices.

Retail petrol prices have been changing on a daily basis in most cities. On 25 March, Hobart had the highest daily average retail prices among the 8 cities, and Brisbane had the lowest. From the previous week, Hobart experienced the largest increase in average prices (22.0 cpl).

Diesel prices increased in all capital cities

Table 4 – Daily average terminal gate prices for regular diesel – cents per litre

	Sydney	Melbourne	Brisbane	Adelaide	Perth	Canberra	Hobart	Darwin
20-Feb	161.8	161.7	161.7	161.4	160.5	161.8	165.5	166.4
18-Mar	271.5	272.2	271.2	272.1	271.4	271.5	272.3	276.2
25-Mar	303.6	302.9	303.6	302.6	302.4	303.6	302.9	307.7
Change 20-Feb to 25-Mar	141.8	141.2	141.9	141.2	141.9	141.8	137.4	141.3
Change from previous week	32.1	30.7	32.4	30.5	31.0	32.1	30.6	31.5

Source: ACCC calculations based on data published on the Australian Institute of Petroleum website.

Note: Sydney terminal gate prices are used as a proxy for Canberra.

Across the 5 largest cities, average terminal gate prices for diesel on 25 March were 303.0 cpl, an increase of 31.3 cpl from the previous week.

Table 5 – Daily average retail regular diesel prices – cents per litre

	Sydney	Melbourne	Brisbane	Adelaide	Perth	Canberra	Hobart	Darwin
20-Feb	174.3	178.9	179.7	174.7	175.6	187.6	184.7	180.5
18-Mar	277.4	277.6	276.8	273.6	273.0	277.6	275.4	274.9
25-Mar	305.6	303.6	305.9	301.9	300.3	306.0	303.7	302.8
Change 20-Feb to 25-Mar	131.3	124.7	126.2	127.2	124.7	118.4	119.0	122.3
Change from previous week	28.2	26.0	29.1	28.3	27.3	28.4	28.3	27.9

Source: ACCC calculations based on data from Informed Sources.

Across the 5 largest cities, daily average retail diesel prices on 25 March were 303.5 cpl, an increase of 27.8 cpl from the previous week. The weekly change in retail diesel prices across the 5 largest cities was less than the change in average terminal gate prices.

Retail diesel prices have also been changing on a daily basis. On 25 March, Canberra had the highest daily average retail prices among the 8 cities, and Perth had the lowest. From the previous week, Brisbane experienced the largest increase in average prices (29.1 cpl).

The difference between daily retail petrol prices and indicative wholesale prices continued to narrow in most cities

The following figures illustrate movements in daily average terminal gate prices and retail regular unleaded petrol prices in each capital city from 1 January to 25 March 2026. For each city, the figures show average retail prices on each day (the purple lines) and average terminal gate prices on the same day (the orange lines).

The figures also illustrate average terminal gate prices lagged by 7 days. Typically, there are lags between changes in wholesale prices and retail prices, because it is generally only when fuel stocks are replenished at a retail site that changes in wholesale prices flow through to retail prices. The ACCC has previously noted the lag in the larger cities is generally between 1 and 2 weeks.

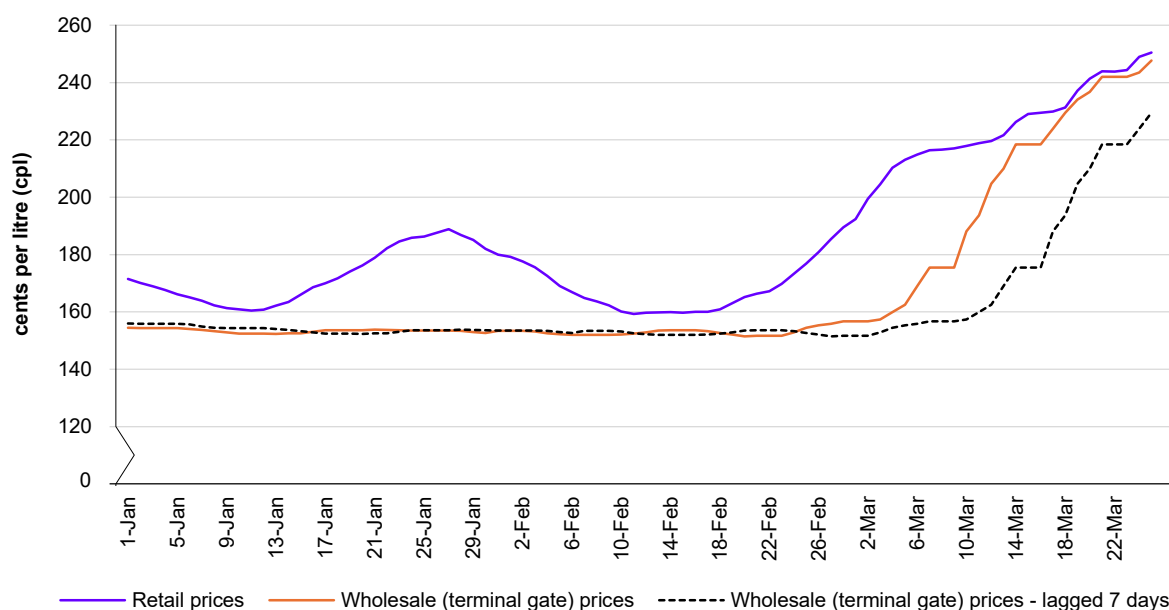
Following the shocks to international markets in late February, daily average retail petrol prices in most cities moved more in line with higher terminal gate prices on the same day, rather than reflecting lagged movements a few days later.

The following figures show that, for most cities over the last week, the margin between daily average terminal gate prices and retail petrol prices narrowed.

Some fuel businesses have told the ACCC that, rather than retail prices based on the cost of fuel currently in their storage, they have moved to prices based on what it will cost them to restock at current prices. They stated that they made this change in response to the degree of risk and volatility in international price movements and the need on a cashflow basis to be able to meet the likely cost of restocking.

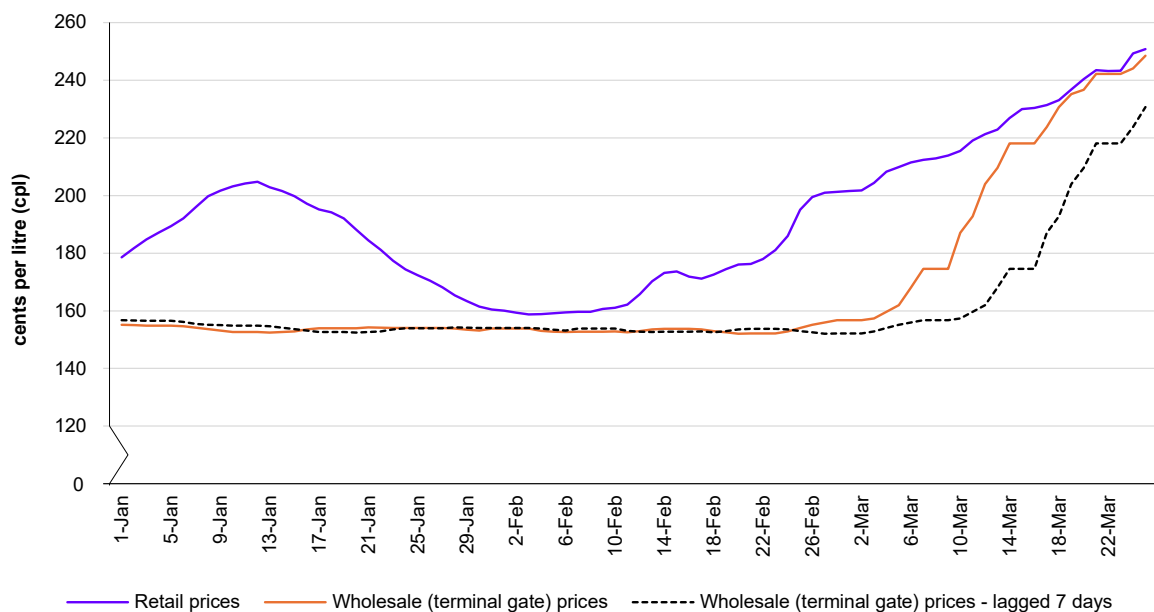
Over the past week, the average difference between daily average retail petrol prices and daily average terminal gate prices lagged by 7 days narrowed in many cities.

Figure 2 – Sydney daily average retail regular unleaded petrol prices, and average terminal gate prices (lagged 7 days)



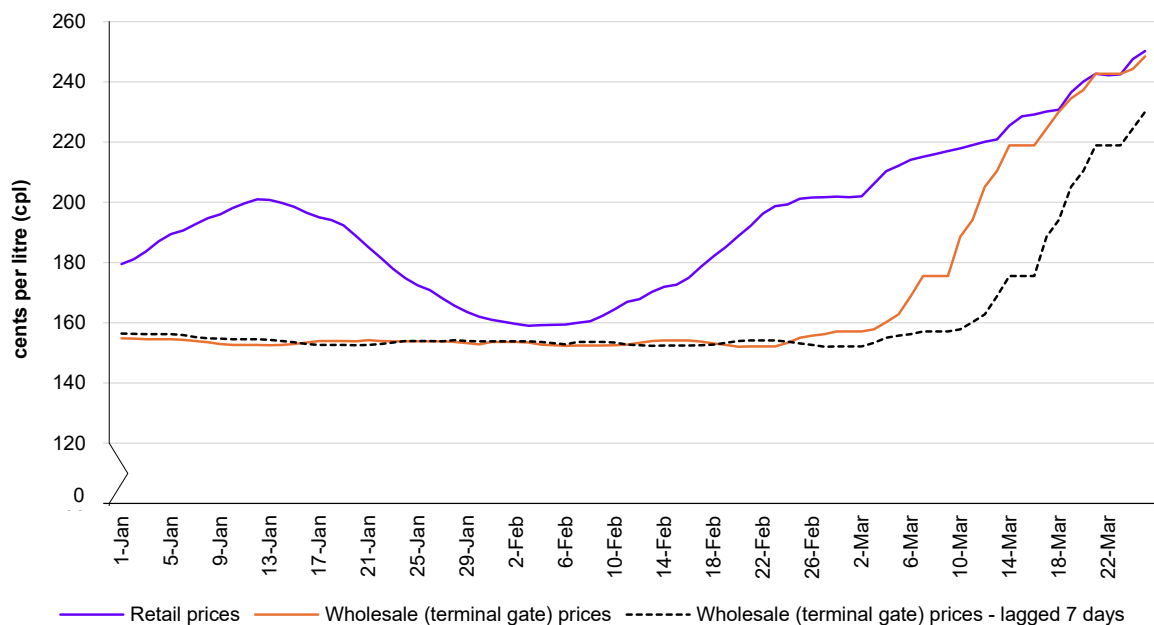
Source: ACCC calculations based on data from Informed Sources and data published on the Australian Institute of Petroleum website.

Figure 3 – Melbourne daily average retail regular unleaded petrol prices, and average terminal gate prices (lagged 7 days)



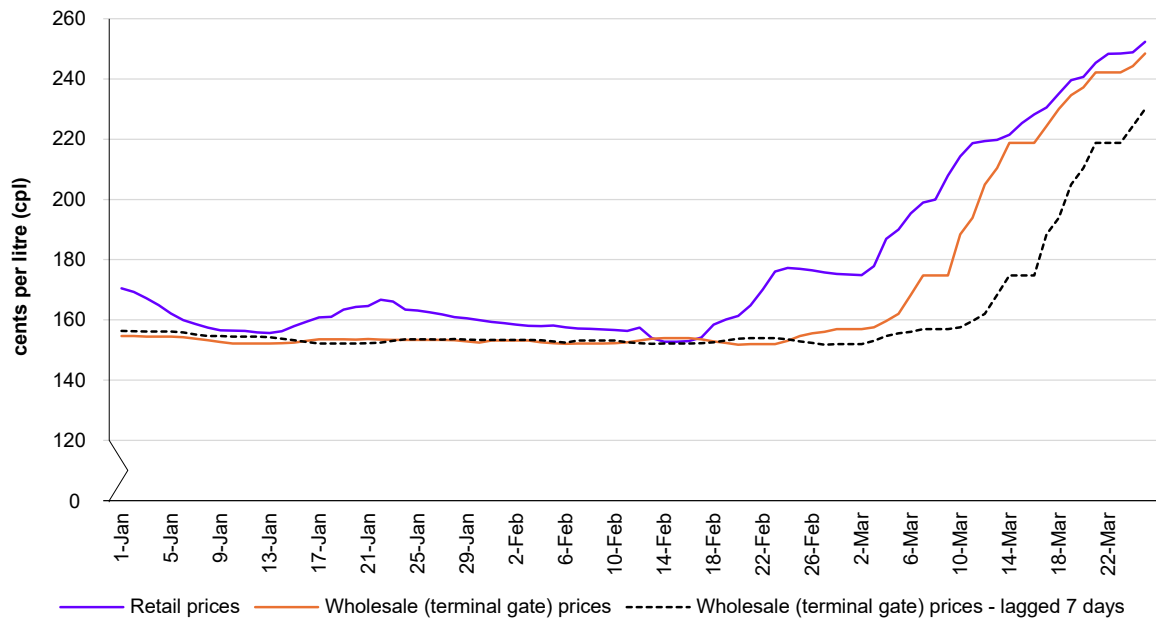
Source: ACCC calculations based on data from Informed Sources and data published on the Australian Institute of Petroleum website.

Figure 4 – Brisbane daily average retail regular unleaded petrol prices, and average terminal gate prices (lagged 7 days)



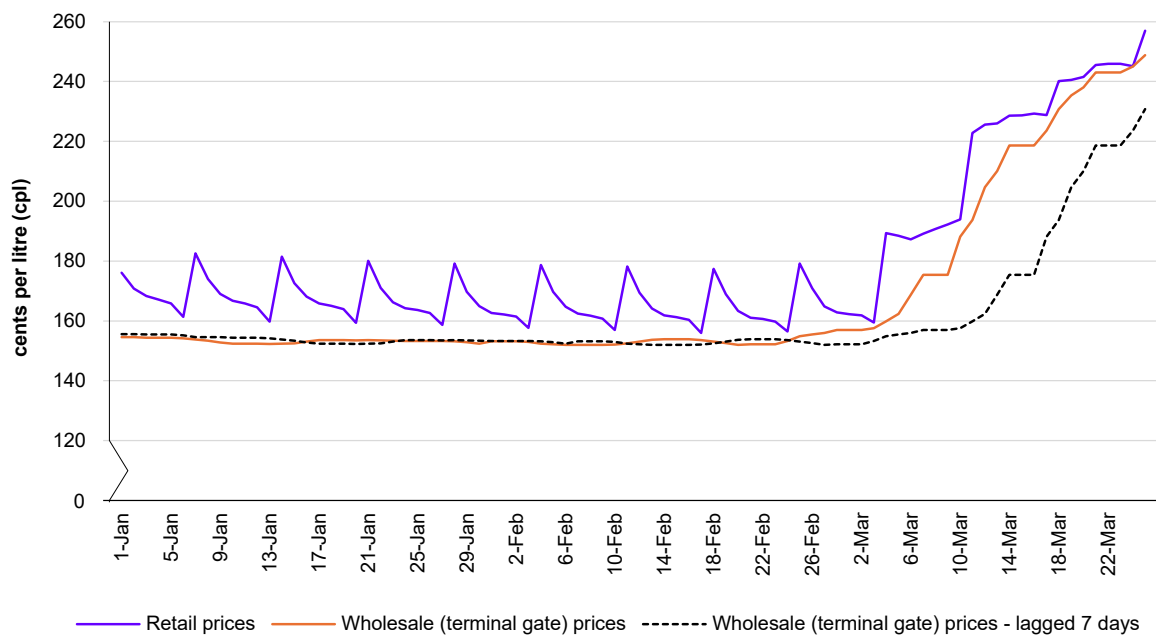
Source: ACCC calculations based on data from Informed Sources and data published on the Australian Institute of Petroleum website.

Figure 5 – Adelaide daily average retail regular unleaded petrol prices, and average terminal gate prices (lagged 7 days)



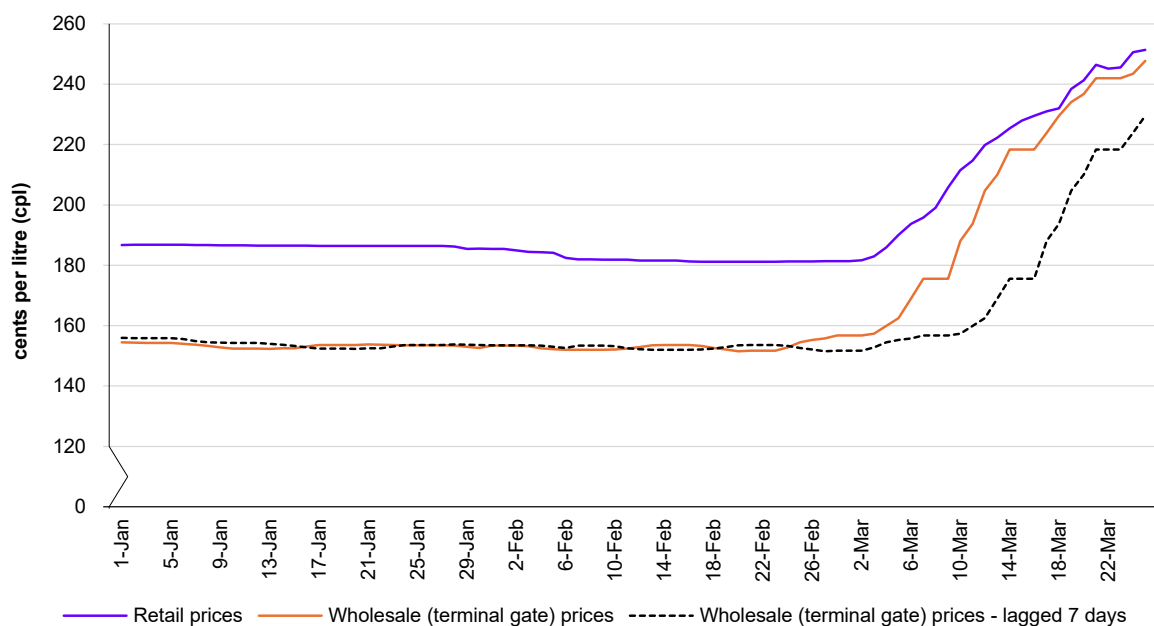
Source: ACCC calculations based on data from Informed Sources and data published on the Australian Institute of Petroleum website.

Figure 6 – Perth daily average retail regular unleaded petrol prices, and average terminal gate prices (lagged 7 days)



Source: ACCC calculations based on data from Informed Sources and data published on the Australian Institute of Petroleum website.

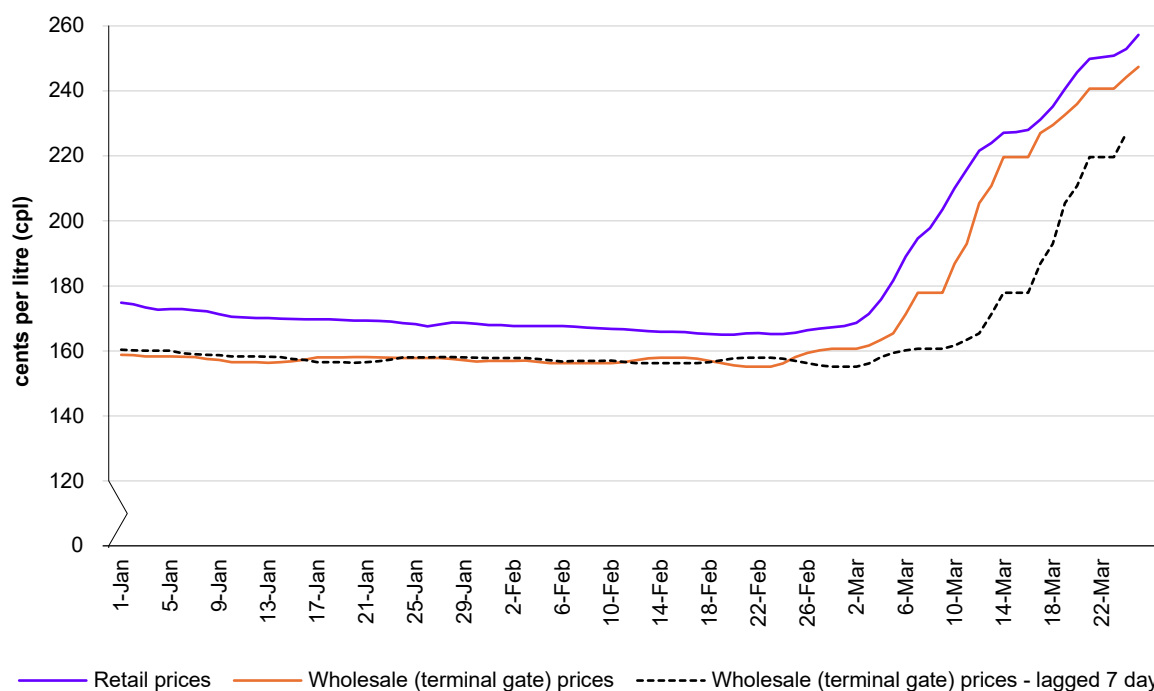
Figure 7 – Canberra daily average retail regular unleaded petrol prices, and average terminal gate prices (lagged 7 days)



Source: ACCC calculations based on data from Informed Sources, and data published on the Australian Institute of Petroleum website.

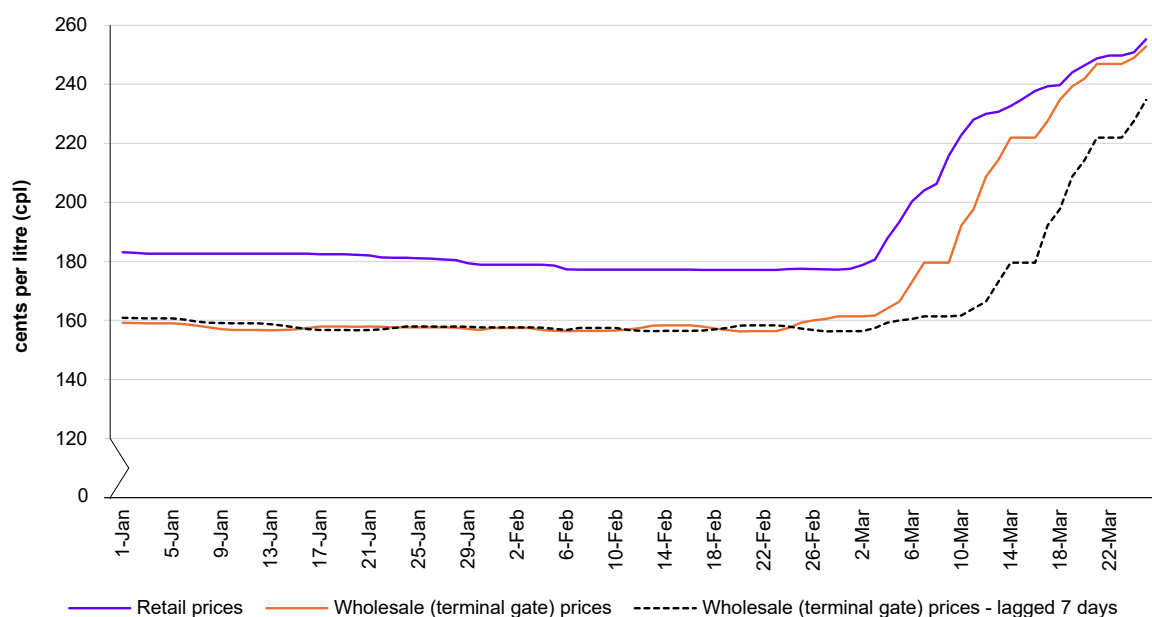
Note: Sydney terminal gate prices are used as a proxy for Canberra.

Figure 8 – Hobart daily average retail regular unleaded petrol prices, and average terminal gate prices (lagged 7 days)



Source: ACCC calculations based on data from Informed Sources, and data published on the Australian Institute of Petroleum website.

Figure 9 – Darwin daily average retail regular unleaded petrol prices, and average terminal gate prices (lagged 7 days)



Source: ACCC calculations based on data from Informed Sources, and data published on the Australian Institute of Petroleum website.

Regional retail petrol and diesel prices also moved higher

Retail petrol and diesel prices in regional locations also increased rapidly following the international price shocks.

The price movements differ between regional locations, and comparisons between daily average prices in different locations should be treated with caution. The size of retail price increases in specific locations may be affected by a range of factors, including the stability of local fuel supply, local fuel shortages and the level of unexpected demand.

The following table shows daily average retail regular unleaded petrol and diesel prices in the 8 capital cities and more than 190 regional locations across Australia, prices on 20 February, 18 March and 25 March, and the change between prices from 18 March to 25 March 2026.

Across all the regional locations monitored by the ACCC, daily average retail petrol prices (in aggregate) on 25 March were 256.2 cpl, an increase of 18.6 cpl from the previous week.

Daily average retail diesel prices across all locations (in aggregate) on 25 March were 307.6 cpl, an increase of 28.6 cpl from the previous week.

Table 6 – Daily average retail regular unleaded petrol and regular diesel prices – cents per litre

Location	PETROL					DIESEL				
	20 Feb	18 Mar	25 Mar	Change from 20 Feb to 25 March	Change from previous week	20 Feb	18 Mar	25 Mar	Change from 20 Feb to 25 March	Change from previous week
Sydney	165.2	231.3	250.5	85.3	19.2	174.3	277.4	305.6	131.3	28.2
Melbourne	176.1	233.1	250.8	74.7	17.7	178.9	277.6	303.6	124.7	26.0
Brisbane	188.8	230.8	250.3	61.5	19.5	179.7	276.8	305.9	126.2	29.1
Adelaide	161.3	235.1	252.4	91.1	17.3	174.7	273.6	301.9	127.2	28.3
Perth	163.3	240.1	257.0	93.7	16.9	175.6	273.0	300.3	124.7	27.3
5 largest cities	170.9	234.1	252.2	81.3	18.1	176.6	275.7	303.5	126.9	27.8
Canberra	181.2	232.0	251.4	70.2	19.4	187.6	277.6	306.0	118.4	28.4
Hobart	165.0	235.2	257.2	92.2	22.0	184.7	275.4	303.7	119.0	28.3
Darwin	177.1	239.7	255.2	78.1	15.5	180.5	274.9	302.8	122.3	27.9
New South Wales										
Albury	169.6	233.6	255.1	85.5	21.5	183.2	276.6	306.9	123.7	30.3
Armidale	172.3	228.3	243.3	71.0	15.0	189.1	272.1	309.9	120.8	37.8
Ballina	173.6	236.8	256.3	82.7	19.5	190.9	283.7	318.4	127.5	34.7
Batemans Bay	169.9	232.6	251.8	81.9	19.2	178.6	276.8	309.5	130.9	32.7
Bathurst	156.8	233.3	250.9	94.1	17.6	175.1	282.4	310.5	135.4	28.1
Bega	178.3	240.0	255.6	77.3	15.6	187.6	283.3	310.1	122.5	26.8
Broken Hill	173.9	240.2	261.9	88.0	21.7	185.6	288.5	310.8	125.2	22.3
Bulahdelah	163.5	233.4	258.7	95.2	25.3	182.2	284.1	307.4	125.2	23.3
Buronga	172.2	254.9	263.9	91.7	9.0	179.9	296.9	311.9	132.0	15.0
Casino	176.2	235.8	255.9	79.7	20.1	188.7	284.7	310.7	122.0	26.0
Central Coast	164.8	233.8	251.7	86.9	17.9	186.8	278.4	309.8	123.0	31.4
Coffs Harbour	168.4	237.9	259.1	90.7	21.2	185.1	282.8	313.3	128.2	30.5
Cooma	172.3	237.8	257.6	85.3	19.8	179.5	278.6	306.1	126.6	27.5
Coonabarabran	167.9	229.9	247.2	79.3	17.3	195.9	275.4	300.7	104.8	25.3
Cootamundra	173.6	254.3	275.2	101.6	20.9	183.1	286.5	323.9	140.8	37.4
Cowra	183.1	236.6	261.6	78.5	25.0	197.9	289.5	312.3	114.4	22.8
Deniliquin	187.1	242.9	261.9	74.8	19.0	191.9	285.7	313.0	121.1	27.3
Dubbo	169.2	234.3	254.5	85.3	20.2	179.0	283.8	309.7	130.7	25.9
Forbes	175.2	240.0	260.3	85.1	20.3	174.9	285.3	312.2	137.3	26.9
Forster	168.6	231.5	248.6	80.0	17.1	192.2	275.9	310.1	117.9	34.2
Gilgandra	170.0	245.0	263.0	93.0	18.0	177.3	286.8	314.3	137.0	27.5
Glen Innes	166.4	238.2	253.4	87.0	15.2	174.2	279.6	305.4	131.2	25.8
Goulburn	172.6	232.4	252.3	79.7	19.9	175.7	277.1	307.0	131.3	29.9
Grafton	172.7	233.5	254.0	81.3	20.5	186.3	275.4	305.4	119.1	30.0
Griffith	171.8	236.2	251.6	79.8	15.4	182.5	280.7	307.6	125.1	26.9
Gundagai	167.1	229.7	249.7	82.6	20.0	183.6	282.4	304.1	120.5	21.7

Location	PETROL					DIESEL				
	20 Feb	18 Mar	25 Mar	Change from 20 Feb to 25 March	Change from previous week	20 Feb	18 Mar	25 Mar	Change from 20 Feb to 25 March	Change from previous week
Gunnedah	156.6	223.7	243.0	86.4	19.3	177.3	282.9	304.3	127.0	21.4
Hay	186.5	249.9	269.7	83.2	19.8	192.9	290.2	322.3	129.4	32.1
Inverell	178.6	237.9	262.4	83.8	24.5	183.2	282.0	308.5	125.3	26.5
Jerilderie	189.9	246.9	265.5	75.6	18.6	191.5	284.7	314.2	122.7	29.5
Kempsey	175.1	243.1	261.0	85.9	17.9	188.0	288.2	312.9	124.9	24.7
Leeton	178.9	235.5	252.5	73.6	17.0	189.9	280.4	311.6	121.7	31.2
Lismore	172.4	240.0	257.8	85.4	17.8	188.8	288.1	317.2	128.4	29.1
Lithgow	168.2	238.8	252.7	84.5	13.9	187.3	273.7	307.5	120.2	33.8
Merimbula	189.6	244.2	255.0	65.4	10.8	187.5	279.5	307.5	120.0	28.0
Mittagong	170.5	235.1	252.0	81.5	16.9	182.2	277.8	306.2	124.0	28.4
Moama	168.7	234.5	255.3	86.6	20.8	183.1	279.9	311.0	127.9	31.1
Moree	176.9	238.6	258.1	81.2	19.5	188.9	281.7	307.9	119.0	26.2
Moruya	169.2	233.0	250.7	81.5	17.7	175.1	272.7	307.3	132.2	34.6
Moss Vale	171.1	232.9	250.4	79.3	17.5	180.4	277.8	305.8	125.4	28.0
Mudgee	191.2	236.0	253.0	61.8	17.0	203.2	274.4	301.8	98.6	27.4
Murwillumbah	172.3	239.9	260.7	88.4	20.8	186.2	281.4	314.4	128.2	33.0
Muswellbrook	163.8	232.7	251.3	87.5	18.6	185.9	277.9	306.6	120.7	28.7
Narrabri	175.9	246.1	267.1	91.2	21.0	181.5	287.3	313.2	131.7	25.9
Newcastle	162.3	234.4	252.3	90.0	17.9	178.0	278.7	307.3	129.3	28.6
Nowra	161.1	234.1	251.0	89.9	16.9	172.2	276.5	306.3	134.1	29.8
Nyngan	171.6	233.9	262.3	90.7	28.4	180.7	283.2	316.0	135.3	32.8
Oberon	161.4	235.6	247.9	86.5	12.3	177.4	285.9	305.7	128.3	19.8
Orange	170.9	237.4	253.9	83.0	16.5	179.4	277.1	309.2	129.8	32.1
Parkes	171.7	236.9	253.9	82.2	17.0	177.6	284.5	309.9	132.3	25.4
Port Macquarie	167.1	234.1	254.3	87.2	20.2	190.9	281.0	305.9	115.0	24.9
Queanbeyan	169.7	233.8	251.8	82.1	18.0	183.7	276.7	310.5	126.8	33.8
Singleton	174.0	232.8	251.3	77.3	18.5	185.4	275.9	307.3	121.9	31.4
Tamworth	168.7	236.0	259.0	90.3	23.0	180.3	280.8	313.9	133.6	33.1
Taree	170.0	237.1	254.6	84.6	17.5	190.3	283.2	311.8	121.5	28.6
Temora	169.9	240.8	264.9	95.0	24.1	179.6	279.6	316.7	137.1	37.1
Tumut	181.4	237.3	256.2	74.8	18.9	194.5	282.2	315.6	121.1	33.4
Tweed Heads South	169.9	233.0	252.4	82.5	19.4	188.4	276.3	305.8	117.4	29.5
Ulladulla	181.0	245.5	263.1	82.1	17.6	192.9	286.8	304.9	112.0	18.1
Wagga Wagga	168.3	231.3	250.9	82.6	19.6	172.4	275.5	305.8	133.4	30.3
Wauchope	171.3	236.2	253.3	82.0	17.1	180.0	281.3	313.3	133.3	32.0
Wellington	188.3	248.1	265.2	76.9	17.1	178.6	284.7	319.7	141.1	35.0
West Wyalong	174.2	241.1	258.7	84.5	17.6	184.2	285.0	314.3	130.1	29.3

Location	PETROL					DIESEL				
	20 Feb	18 Mar	25 Mar	Change from 20 Feb to 25 March	Change from previous week	20 Feb	18 Mar	25 Mar	Change from 20 Feb to 25 March	Change from previous week
Wollongong	165.4	233.6	252.1	86.7	18.5	177.5	279.9	310.3	132.8	30.4
Woolgoolga	178.2	235.9	254.4	76.2	18.5	191.1	284.9	313.5	122.4	28.6
Yass	177.1	238.7	259.4	82.3	20.7	187.5	278.8	309.0	121.5	30.2
Northern Territory										
Alice Springs	194.0	252.0	272.7	78.7	20.7	190.5	284.6	315.8	125.3	31.2
Katherine	179.3	243.6	252.6	73.3	9.0	176.2	267.1	297.2	121.0	30.1
Tennant Creek	195.3	231.6	255.2	59.9	23.6	198.4	261.9	317.5	119.1	55.6
Queensland										
Atherton	177.7	241.7	251.7	74.0	10.0	194.5	279.1	301.8	107.3	22.7
Ayr	167.7	238.5	256.6	88.9	18.1	174.4	282.2	310.5	136.1	28.3
Biloela	177.2	238.6	261.5	84.3	22.9	178.9	271.4	307.6	128.7	36.2
Blackall	205.9	233.9	244.9	39.0	11.0	189.8	280.0	321.3	131.5	41.3
Blackwater	199.9	232.9	253.9	54.0	21.0	183.9	274.9	307.3	123.4	32.4
Bowen	175.5	235.4	252.4	76.9	17.0	180.7	277.1	302.3	121.6	25.2
Bundaberg	160.9	235.7	255.2	94.3	19.5	169.8	278.6	306.0	136.2	27.4
Caboolture	207.4	232.6	250.0	42.6	17.4	182.9	280.1	309.6	126.7	29.5
Cairns	164.7	234.1	251.3	86.6	17.2	177.8	276.9	303.5	125.7	26.6
Charleville	194.9	228.9	238.9	44.0	10.0	186.4	275.4	303.9	117.5	28.5
Charters Towers	178.9	240.4	255.2	76.3	14.8	183.9	287.1	308.1	124.2	21.0
Childers	183.7	238.1	260.5	76.8	22.4	188.4	282.9	314.5	126.1	31.6
Cloncurry	194.9	268.9	287.9	93.0	19.0	189.5	284.5	310.2	120.7	25.7
Cunnamulla	202.4	256.9	276.1	73.7	19.2	193.4	298.3	324.7	131.3	26.4
Dalby	159.9	231.5	249.7	89.8	18.2	176.7	279.7	303.5	126.8	23.8
Emerald	187.5	244.0	258.0	70.5	14.0	188.7	284.8	309.0	120.3	24.2
Gladstone	174.7	237.1	256.6	81.9	19.5	173.9	278.5	308.0	134.1	29.5
Gold Coast	167.7	230.9	249.9	82.2	19.0	177.5	277.0	306.1	128.6	29.1
Goondiwindi	161.6	231.3	251.8	90.2	20.5	172.8	278.1	305.3	132.5	27.2
Gympie	168.0	235.4	254.5	86.5	19.1	174.7	279.6	308.7	134.0	29.1
Hervey Bay	164.0	233.8	253.2	89.2	19.4	174.7	277.2	308.5	133.8	31.3
Ingham	172.6	233.4	251.0	78.4	17.6	182.6	277.2	301.9	119.3	24.7
Innisfail	162.3	235.5	250.2	87.9	14.7	172.1	279.4	308.0	135.9	28.6
Ipswich	183.5	230.2	250.6	67.1	20.4	180.9	278.0	305.8	124.9	27.8
Kingaroy	165.5	231.0	246.9	81.4	15.9	175.7	269.7	299.0	123.3	29.3
Longreach	201.5	245.9	267.5	66.0	21.6	195.8	291.6	311.4	115.6	19.8
Mackay	168.7	235.7	255.1	86.4	19.4	181.9	279.7	307.6	125.7	27.9
Mareeba	172.3	233.5	252.9	80.6	19.4	182.9	278.0	304.2	121.3	26.2
Maryborough	164.2	231.4	250.5	86.3	19.1	172.8	268.3	298.6	125.8	30.3
Miles	157.7	228.9	248.5	90.8	19.6	171.4	273.9	299.7	128.3	25.8

Location	PETROL					DIESEL				
	20 Feb	18 Mar	25 Mar	Change from 20 Feb to 25 March	Change from previous week	20 Feb	18 Mar	25 Mar	Change from 20 Feb to 25 March	Change from previous week
Moranbah	189.4	246.8	270.1	80.7	23.3	193.0	289.0	318.3	125.3	29.3
Mt Isa	211.2	250.1	273.4	62.2	23.3	206.2	281.9	305.9	99.7	24.0
Normanton	198.4	203.4	203.4	5.0	0.0	200.8	260.8	264.8	64.0	4.0
Rockhampton	169.2	233.3	253.8	84.6	20.5	175.0	280.7	309.0	134.0	28.3
Roma	152.1	230.7	252.9	100.8	22.2	171.9	278.1	309.1	137.2	31.0
Sunshine Coast	169.4	234.3	252.9	83.5	18.6	184.6	279.6	309.6	125.0	30.0
Toowoomba	166.6	232.8	251.0	84.4	18.2	172.1	276.4	302.5	130.4	26.1
Townsville	164.8	234.0	250.8	86.0	16.8	178.8	278.7	304.4	125.6	25.7
Tully	165.9	236.4	253.1	87.2	16.7	175.7	284.0	303.5	127.8	19.5
Warwick	168.8	230.8	251.5	82.7	20.7	174.9	279.9	305.9	131.0	26.0
Weipa	223.9	246.9	273.9	50.0	27.0	216.9	269.9	298.9	82.0	29.0
Whitsunday	168.6	231.3	250.3	81.7	19.0	170.3	269.1	303.5	133.2	34.4
Yeppoon	176.7	229.9	259.9	83.2	30.0	192.6	254.1	312.0	119.4	57.9
South Australia										
Bordertown	173.2	234.7	253.2	80.0	18.5	174.5	276.7	306.7	132.2	30.0
Ceduna	184.6	254.3	269.7	85.1	15.4	190.7	294.7	315.8	125.1	21.1
Clare	175.2	241.1	258.1	82.9	17.0	178.5	269.9	311.7	133.2	41.8
Coober Pedy	220.5	269.1	282.4	61.9	13.3	224.7	285.7	314.7	90.0	29.0
Gawler	156.9	241.0	252.0	95.1	11.0	176.9	272.0	303.7	126.8	31.7
Kadina	174.9	238.2	258.3	83.4	20.1	177.9	275.5	313.2	135.3	37.7
Keith	163.4	231.9	255.3	91.9	23.4	170.1	269.6	304.8	134.7	35.2
Loxton	173.2	234.7	257.5	84.3	22.8	178.1	274.5	307.7	129.6	33.2
Mt Gambier	160.2	232.9	250.0	89.8	17.1	167.2	275.3	302.9	135.7	27.6
Murray Bridge	177.9	236.2	253.8	75.9	17.6	192.1	264.0	304.9	112.8	40.9
Naracoorte	174.6	238.6	253.3	78.7	14.7	183.4	277.8	309.0	125.6	31.2
Port Augusta	168.0	235.4	251.5	83.5	16.1	178.5	274.5	304.2	125.7	29.7
Port Lincoln	179.8	238.2	253.1	73.3	14.9	176.4	277.6	306.8	130.4	29.2
Port Pirie	178.6	238.1	251.7	73.1	13.6	188.9	275.9	307.1	118.2	31.2
Renmark	180.2	238.7	254.2	74.0	15.5	178.1	275.4	305.9	127.8	30.5
Tailem Bend	176.9	236.9	252.7	75.8	15.8	181.7	276.0	303.9	122.2	27.9
Victor Harbour	156.0	236.5	250.4	94.4	13.9	170.9	273.5	301.8	130.9	28.3
Whyalla	175.7	238.8	254.7	79.0	15.9	182.2	277.9	306.4	124.2	28.5
Tasmania										
Burnie	164.6	233.1	257.2	92.6	24.1	180.5	275.2	308.5	128.0	33.3
Campbell Town	180.3	236.4	257.1	76.8	20.7	188.6	279.2	311.5	122.9	32.3
Devonport	170.5	233.3	257.5	87.0	24.2	179.7	276.0	311.2	131.5	35.2
Huonville	163.7	237.9	259.7	96.0	21.8	178.5	274.4	310.3	131.8	35.9
Launceston	168.5	234.7	257.4	88.9	22.7	176.2	276.3	306.8	130.6	30.5

Location	PETROL					DIESEL				
	20 Feb	18 Mar	25 Mar	Change from 20 Feb to 25 March	Change from previous week	20 Feb	18 Mar	25 Mar	Change from 20 Feb to 25 March	Change from previous week
New Norfolk	181.2	238.0	260.7	79.5	22.7	188.7	277.5	310.6	121.9	33.1
Queenstown	174.9	232.9	257.2	82.3	24.3	180.7	276.9	313.7	133.0	36.8
Smithton	183.7	238.8	259.6	75.9	20.8	185.1	268.4	311.6	126.5	43.2
Sorell	166.0	235.9	256.1	90.1	20.2	186.9	278.3	306.9	120.0	28.6
Ulverstone	185.6	238.2	263.8	78.2	25.6	192.6	282.1	313.9	121.3	31.8
Wynyard	170.4	233.3	257.9	87.5	24.6	182.5	276.6	309.3	126.8	32.7
Victoria										
Ararat	159.4	231.7	251.6	92.2	19.9	180.0	283.0	308.0	128.0	25.0
Bairnsdale	170.5	241.4	253.7	83.2	12.3	177.7	285.1	308.1	130.4	23.0
Ballarat	161.9	235.1	251.0	89.1	15.9	174.3	281.2	306.1	131.8	24.9
Benalla	168.0	237.0	254.2	86.2	17.2	177.5	276.1	302.1	124.6	26.0
Bendigo	165.5	234.1	251.8	86.3	17.7	176.7	278.4	303.4	126.7	25.0
Cobram	170.7	235.8	256.4	85.7	20.6	176.3	251.7	277.4	101.1	25.7
Colac	170.7	234.6	251.8	81.1	17.2	185.1	284.7	306.2	121.1	21.5
Corryong	185.9	247.5	269.0	83.1	21.5	187.4	305.8	323.4	136.0	17.6
Echuca	162.0	232.6	253.1	91.1	20.5	178.5	275.1	302.0	123.5	26.9
Euroa	167.4	236.0	252.4	85.0	16.4	189.9	279.9	304.9	115.0	25.0
Geelong	160.2	233.0	250.3	90.1	17.3	177.9	279.8	303.1	125.2	23.3
Hamilton	166.4	235.5	253.8	87.4	18.3	175.9	278.7	306.5	130.6	27.8
Horsham	175.9	238.3	252.1	76.2	13.8	177.3	279.8	305.1	127.8	25.3
Koo Wee Rup	169.9	236.6	251.4	81.5	14.8					
Kyabram	171.8	234.4	255.8	84.0	21.4	174.9	291.2	310.5	135.6	19.3
Lakes Entrance	167.4	231.9	254.1	86.7	22.2	165.9	270.1	301.0	135.1	30.9
Leongatha	163.4	236.4	256.6	93.2	20.2	177.1	228.4	243.6	66.5	15.2
Mansfield	189.9	244.6	263.2	73.3	18.6	184.9	279.0	306.0	121.1	27.0
Mildura	168.3	239.6	253.6	85.3	14.0	175.3	283.8	305.5	130.2	21.7
Moe	158.4	233.6	252.5	94.1	18.9	169.4	275.4	304.4	135.0	29.0
Morwell	163.0	239.0	254.1	91.1	15.1	182.1	283.1	305.4	123.3	22.3
Orbost	179.9	251.1	269.0	89.1	17.9	179.9	290.3	318.9	139.0	28.6
Portland	168.9	237.1	251.3	82.4	14.2	171.6	281.7	306.6	135.0	24.9
Sale	171.3	237.6	259.7	88.4	22.1	185.1	280.1	308.6	123.5	28.5
Seymour	162.5	234.0	254.1	91.6	20.1	177.9	273.2	301.1	123.2	27.9
Shepparton	162.1	226.8	245.8	83.7	19.0	181.2	279.1	302.9	121.7	23.8
Swan Hill	174.2	239.5	255.4	81.2	15.9	182.0	280.6	305.6	123.6	25.0
Traralgon	161.5	233.7	254.3	92.8	20.6	180.2	273.6	303.7	123.5	30.1
Wallan	163.2	229.3	253.7	90.5	24.4	177.9	272.4	299.2	121.3	26.8
Wangaratta	167.0	235.6	254.0	87.0	18.4	180.7	275.3	303.5	122.8	28.2
Warrnambool	164.8	235.4	251.6	86.8	16.2	179.2	268.0	293.6	114.4	25.6

Location	PETROL					DIESEL				
	20 Feb	18 Mar	25 Mar	Change from 20 Feb to 25 March	Change from previous week	20 Feb	18 Mar	25 Mar	Change from 20 Feb to 25 March	Change from previous week
Wodonga	174.1	234.2	253.8	79.7	19.6	183.0	280.3	307.6	124.6	27.3
Wonthaggi	155.6	242.7	257.4	101.8	14.7	170.1	286.8	308.8	138.7	22.0
Yarrawonga	183.9	242.8	261.3	77.4	18.5	198.9	287.7	308.6	109.7	20.9
Western Australia										
Albany	168.5	241.7	256.5	88.0	14.8	174.8	280.7	307.5	132.7	26.8
Boulder	174.9	236.9	258.9	84.0	22.0	187.9	275.2	307.5	119.6	32.3
Bridgetown	172.8	232.8	256.5	83.7	23.7	177.8	274.8	308.1	130.3	33.3
Broome	219.9	269.8	287.0	67.1	17.2	206.2	284.3	307.2	101.0	22.9
Bunbury	165.5	232.5	250.0	84.5	17.5	169.6	270.8	299.2	129.6	28.4
Busselton	166.4	234.4	249.6	83.2	15.2	175.0	272.1	300.2	125.2	28.1
Carnarvon	198.4	254.1	267.3	68.9	13.2	180.9	284.9	315.2	134.3	30.3
Collie	183.8	242.5	265.1	81.3	22.6	192.8	282.1	309.1	116.3	27.0
Dongara	167.8	238.7	258.7	90.9	20.0	175.7	279.0	310.2	134.5	31.2
Esperance	173.5	243.5	262.9	89.4	19.4	176.4	281.3	314.4	138.0	33.1
Geraldton	166.5	235.9	253.7	87.2	17.8	172.3	273.7	305.7	133.4	32.0
Kalgoorlie	177.2	241.1	258.7	81.5	17.6	187.6	278.3	302.5	114.9	24.2
Karratha	186.3	241.5	260.6	74.3	19.1	193.5	276.9	303.5	110.0	26.6
Manjimup	170.9	238.7	257.2	86.3	18.5	177.9	280.1	309.7	131.8	29.6
Mount Barker	170.5	237.2	257.8	87.3	20.6	176.6	278.5	307.9	131.3	29.4
Port Hedland	197.9	251.5	268.9	71.0	17.4	194.7	281.4	305.0	110.3	23.6
Waroona	176.1	238.1	263.1	87.0	25.0	187.1	279.1	301.8	114.7	22.7

Source: ACCC calculations based on data from Informed Sources.

Notes: Daily average prices represent an average of price levels throughout the given day.

The were no diesel prices available for Koo Wee Rup.

Australian Competition and Consumer Commission

Land of the Ngunnawal people

23 Marcus Clarke Street, Canberra, Australian Capital Territory, 2601

© Commonwealth of Australia 2026

This work is copyright. In addition to any use permitted under the *Copyright Act 1968*, all material contained within this work is provided under a Creative Commons Attribution 4.0 Australia licence, with the exception of:

- the Commonwealth Coat of Arms
- the ACCC and AER logos
- any illustration, diagram, photograph or graphic over which the Australian Competition and Consumer Commission does not hold copyright, but which may be part of or contained within this publication.

The details of the relevant licence conditions are available on the Creative Commons website, as is the full legal code for the CC BY 4.0 AU licence.

Requests and inquiries concerning reproduction and rights should be addressed to the General Manager, Strategic Communications, ACCC, GPO Box 3131, Canberra ACT 2601.

Important notice

The information in this publication is for general guidance only. It does not constitute legal or other professional advice, and should not be relied on as a statement of the law in any jurisdiction. Because it is intended only as a general guide, it may contain generalisations. You should obtain professional advice if you have any specific concern.

The ACCC has made every reasonable effort to provide current and accurate information, but it does not make any guarantees regarding the accuracy, currency or completeness of that information.

The ACCC obtains confidential proprietary data from Argus Media under licence, from which data the ACCC conducts and publishes its own calculations and forms its own opinions. Argus Media does not make or give any warranty, express or implied, as to the accuracy, currency, adequacy or completeness of its data and it shall not be liable for any loss or damage arising from any party's reliance on, or use of, the data provided or the ACCC's calculations.

Parties who wish to re-publish or otherwise use the information in this publication must check this information for currency and accuracy prior to publication. This should be done prior to each publication edition, as ACCC guidance and relevant transitional legislation frequently change. Any queries parties have should be addressed to the General Manager, Strategic Communications, ACCC, GPO Box 3131, Canberra ACT 2601.

www.accc.gov.au