



Weekly fuel price monitoring report

Friday 20 March 2026

Key messages

The ACCC has increased its monitoring of the fuel industry from its usual quarterly reporting to weekly reporting. This is our second weekly report.

This report sets out the latest ACCC fuel related activities, as well as the latest movements in crude oil, international refined fuel benchmarks, and domestic wholesale and retail fuel prices.

The report provides an update on last week's report on the latest retail fuel prices in Australia's capital cities. In addition, this week we have expanded the reporting to include around 190 regional locations, giving a more comprehensive picture of fuel prices across Australia.

Key points from this report include:

- The ACCC is engaging with the fuel industry and consumers to monitor severe fuel market volatility and supply disruptions linked to the Middle East conflict. Consumers have raised concerns associated with the sharp increases in refined fuel prices, and some regional areas experiencing shortages, particularly of diesel.
- Petrol and diesel shortages have tended to be localised and caused by increases in demand, rather than overall reduced supply.
- Diesel has broader uses in the Australian economy relative to petrol, including as an input to agriculture and aquaculture, mining, transport logistics and electricity generation. Australia consumes significantly more diesel compared with petrol. In 2025, diesel sales volumes across retail and commercial were more than double that of all petrol grades.¹
- The ACCC understands concerns about diesel availability in regional and rural Australia and the impacts on residents, businesses and primary producers.
- The ACCC is assessing an application from the Australian Institute of Petroleum for urgent interim authorisation to coordinate, as needed, to manage supply chain issues.
- In the week to 18 March 2026, international prices moved higher, particularly for refined diesel. The benchmark for refined diesel (Singapore Gasoil 10 ppm) has risen sharply, up 18% from the previous week, and around 109% over the past 4 weeks. This was influenced by tighter diesel supply and reduced availability of suitable Middle Eastern crude oil due to ongoing shipping disruptions in the Strait of Hormuz.
- Retail petrol and diesel prices had already increased sharply in recent weeks, and increased further over the last week. The size of the increases over the last week was smaller than the initial sharp increases. Petrol prices across the 8 capital cities are more similar than usual.²

¹ In 2025, diesel consumption was around 33,508 million litres, compared with around 15,798 million litres of all petrol grades consumed, based on ACCC calculations of Department of Climate Change, Energy, the Environment and Water, [Australian Petroleum Statistics 2026](#), accessed on 19 March 2026.

² Often petrol price cycles are at different points between the 5 largest cities, but in the last 2 weeks all have increased to a similar average level. There appears to be less price dispersion within cities than at times when petrol price cycles have more typical movements, however there is still some range of prices available.

- On 18 March, Perth had the highest daily average retail **petrol** prices among the 8 cities (240.1 cpl), and Canberra had the lowest (232.0 cpl). From the previous week, Hobart experienced the largest increase in average prices (19.4 cpl).
- On 18 March, Melbourne had the highest daily average retail **diesel** prices among the 8 cities (277.6 cpl), and Perth had the lowest (273.0 cpl). From the previous week, Melbourne experienced the largest increase in average prices (39.9 cpl).
- Over the last week, in many cities the average difference between daily average indicative wholesale (terminal gate) prices and retail petrol and diesel prices has reduced.
- Most regional locations across Australia have also experienced sharp retail price increases. The size of increases in specific locations may reflect a range of factors, including local supply stability and unexpected demand. As a result, comparisons between daily average prices in different locations should be treated with caution.
- Some fuel businesses have told the ACCC that, rather than prices based on the cost of fuel currently in their storage, they have moved to prices based on what it will cost them to restock at current prices. The fuel businesses stated that they made this change in response to the degree of risk and volatility in international price movements.
- The fuel industry reported increased abuse of fuel retail staff during this period of higher prices and uncertainty, and called for their staff at the retail sites to be treated with respect.

The ACCC continues to engage with industry

On 17 March 2026, the ACCC met with industry and motor organisations to discuss impacts from the conflict in the Middle-East, the rapid fuel price spikes, and fuel supply issues affecting consumers and businesses around Australia, at an emergency meeting held at the ACCC's Sydney and Melbourne offices.

Key themes from the meeting included:

- Unprecedented uncertainty and volatility in the market, including a surge in community and business fuel demand.
- Fuel supply chains being under pressure to manage supply effectively. Major fuel suppliers were confident in their ability to supply contracted volumes for the foreseeable future and are working to ensure reliable fuel supply.
- While the price of crude oil has increased, the price of refined fuels (such as petrol and diesel) has increased significantly more, which affect retail fuel prices more immediately.
- Concerns that off-contract (spot market) buyers of fuel in the wholesale market are struggling to obtain supply, and that this is disproportionately impacting supply reaching some regional areas.

On 11 March 2026, the Australian Institute of Petroleum (AIP) issued a statement on fuel supply in Australia, in which it noted that over the week prior, AIP members (Ampol, bp, Mobil and Viva Energy) have been hit by a sudden rush to buy fuel. It also noted that AIP members have had to prioritise supply to their regular customers, and cease spot sales.³

The ACCC understands concerns about diesel availability in regional and rural Australia and the impacts on residents, businesses and primary producers.

On 19 March, the AIP, on behalf of Ampol, bp, Mobil and Viva energy, lodged an application for urgent interim authorisation to coordinate, as needed, to manage supply chain issues. The ACCC is assessing the application and will make a decision imminently.

On 19 March, the ACCC announced an enforcement investigation into allegations of anti-competitive conduct by each of the major fuel suppliers.

³ Australian Institute of Petroleum, [AIP Statement on fuel supply in Australia](#), media release, 11 March 2026, accessed on 19 March 2026.

International prices moved higher, particularly for refined diesel

Australian retail fuel prices are largely determined by movements in international benchmark refined fuel prices (which are driven by international crude oil prices), and the AUD-USD exchange rate. International benchmark prices movements drive domestic wholesale prices, which then influence retail fuel prices.

Additionally, in the 5 largest cities (Sydney, Melbourne, Brisbane, Adelaide and Perth), retail petrol prices move up and down in regular patterns, known as petrol price cycles. The ACCC petrol price cycles web page has more information on these price cycles:

<https://www.accc.gov.au/consumers/petrol-and-fuel/petrol-price-cycles-in-the-5-largest-cities>. Retail diesel prices do not move in cycles.

During the week ending Friday 20 February 2026, reports noted that international crude oil prices were being influenced by conflict in the Middle-East.

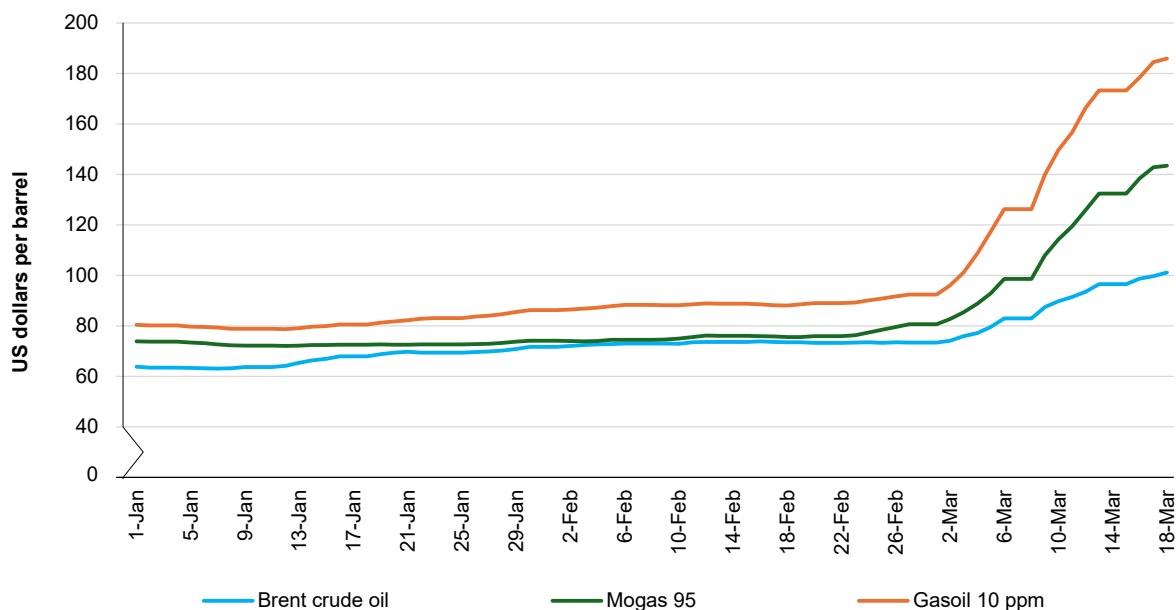
On 20 February, Australian average wholesale (terminal gate) petrol and diesel prices started edging up from relatively stable levels since the start of 2026. On 28 February, conflict escalated between the United States, Israel and Iran.

*The international benchmark price for refined fuel is the largest component of retail fuel prices. The international benchmark for Australian retail **petrol** prices is Singapore Mogas 95 (**Mogas 95**). The international benchmark for Australian retail **diesel** prices is Singapore Gasoil with 10 parts per million sulphur content (**Gasoil 10 ppm**).*

Both petrol and diesel are refined from crude oil and their prices generally tend to follow similar movements over the long term. However, the different fuels have their own supply and demand characteristics (for example, compared with petrol, diesel also has remote energy generation and industrial uses) and the different refined fuels have their own international benchmark prices. It is these benchmarks that drive retail diesel and retail petrol prices.

The following figure shows the movements of weekly average international crude oil and refined fuel benchmark prices between 1 January and 18 March 2026.

Figure 1 – Weekly average international crude oil and refined fuel benchmark prices



Source: ACCC calculations based on data from Argus Media.

The following table shows movements in weekly average crude oil, and international refined petrol (Mogas 95) and refined diesel (Gasoil 10 ppm) benchmark prices from the week to 20 February to the week to 18 March 2026.

Table 1 – Weekly average international crude oil and refined fuel benchmark prices

	Brent crude oil USD per barrel	Brent crude oil A cpl	Mogas 95 USD per barrel	Mogas 95 A cpl	Gasoil 10 ppm USD per barrel	Gasoil 10 ppm A cpl
Week to 20-Feb	73	65	76	68	89	79
Week to 11-Mar	91	82	119	106	157	140
Week to 18-Mar	101	90	143	127	186	165
Change 20-Feb to 18-Mar	28	25	67	59	97	86
Change from previous week	10	8	24	21	29	25

Source: ACCC calculations based on data from Argus Media and the Reserve Bank of Australia.

Notes: 'USD' means United States dollars.

'A cpl' means Australian cents per litre.

In the week to 18 March, weekly average Mogas 95 prices, in Australian cents per litre, were around 127 cpl, an increase of around 21 cpl from the previous week.

In the week to 18 March, weekly average Gasoil 10 ppm prices, in Australian cents per litre, were around 165 cpl, an increase of around 25 cpl from the previous week.

The more severe impacts have been on refined diesel (Gasoil 10 ppm) benchmark prices which (on a weekly average basis in Australian cents per litre) have increased by around 18% from the previous week, and around 109% over the last 4 weeks. The surge in refined diesel

prices is influenced by pressures on supplies of diesel together with the Middle-Eastern type of crude oil most suited to produce it, from shipping disruptions in the Strait of Hormuz.⁴

Petrol prices increased further in capital cities

Terminal gate prices are prices that wholesalers charge for petrol and diesel in the spot market. The major wholesalers post these prices on their websites on a regular basis. Although few wholesale transactions occur at terminal gate prices and actual costs can vary across brands and cities, they are typically indicative of average wholesale prices. Terminal gate prices are indicative of the wholesale price of petrol or diesel only, and exclude transport and other retail operating costs.

Note on terminal gate prices in the current environment

The ACCC has used terminal gate prices over many years as a transparent and timely proxy for looking at general movements of wholesale prices over time. Given that the ACCC has been informed that some major suppliers have recently ceased spot market sales due to supply shortages, it is likely there have been even fewer than normal transactions at or near terminal gate prices since the supply disruptions. The ACCC also heard from market participants at its meeting on 17 March, that some transactions have been quite different to published terminal gate prices.

The following tables show movements in average terminal gate and retail petrol prices in Australia's capital cities, from 20 February to 18 March 2026.

Table 2 – Daily average terminal gate prices for regular unleaded petrol – cents per litre

	Sydney	Melbourne	Brisbane	Adelaide	Perth	Canberra	Hobart	Darwin
20-Feb	151.5	152.1	152.1	151.8	152.0	151.5	155.5	156.3
11-Mar	193.7	192.8	194.2	193.9	193.7	193.7	192.9	197.7
18-Mar	229.5	230.7	230.1	230.0	230.8	229.5	229.5	234.7
Change 20-Feb to 18-Mar	78.0	78.6	78.0	78.2	78.8	78.0	74.0	78.4
Change from previous week	35.8	37.9	35.9	36.1	37.1	35.8	36.6	37.0

Source: ACCC calculations based on data published on the Australian Institute of Petroleum website.

Note: Sydney terminal gate prices are used as a proxy for Canberra.

Across the 5 largest cities, average terminal gate prices on 18 March were 230.2 cpl, an increase of 36.5 cpl from the previous week.

⁴ Reuters, [Diesel markets, upended by Middle East conflict, threaten global economic slowdown](#), 11 March 2025, accessed on 19 March 2026.

Table 3 – Daily average retail regular unleaded petrol prices – cents per litre

	Sydney	Melbourne	Brisbane	Adelaide	Perth	Canberra	Hobart	Darwin
20-Feb	165.2	176.1	188.8	161.3	163.3	181.2	165.0	177.1
11-Mar	218.8	219.1	219.0	218.7	222.8	214.7	215.8	228.0
18-Mar	231.3	233.1	230.8	235.1	240.1	232.0	235.2	239.7
Change 20-Feb to 18-Mar	66.1	57.0	42.0	73.8	76.8	50.8	70.2	62.6
Change from previous week	12.5	14.0	11.8	16.4	17.3	17.3	19.4	11.7

Source: ACCC calculations based on data from Informed Sources.

Across the 5 largest cities, daily average retail petrol prices on 18 March were 234.1 cpl, an increase of 14.4 cpl from the previous week. The weekly change in retail petrol prices across the 5 largest cities was less than the change in average terminal gate prices.

Retail petrol price levels have been changing on a daily basis in most cities. On 18 March, Perth had the highest daily average retail prices among the 8 cities, and Canberra had the lowest. From the previous week, Hobart experienced the largest increase in average prices (19.4 cpl).

Diesel prices increased in all capital cities

Table 4 – Daily average terminal gate prices for regular diesel – cents per litre

	Sydney	Melbourne	Brisbane	Adelaide	Perth	Canberra	Hobart	Darwin
20-Feb	161.8	161.7	161.7	161.4	160.5	161.8	165.5	166.4
11-Mar	228.4	227.1	228.0	227.8	226.7	228.4	226.5	232.4
18-Mar	271.5	272.2	271.2	272.1	271.4	271.5	272.3	276.2
Change 20-Feb to 18-Mar	109.7	110.5	109.5	110.7	110.9	109.7	106.8	109.8
Change from previous week	43.1	45.1	43.2	44.3	44.7	43.1	45.8	43.8

Source: ACCC calculations based on data published on the Australian Institute of Petroleum website.

Note: Sydney terminal gate prices are used as a proxy for Canberra.

Across the 5 largest cities, average terminal gate prices on 18 March were 271.7 cpl, an increase of 44.1 cpl from the previous week.

Table 5 – Daily average retail regular diesel prices – cents per litre

	Sydney	Melbourne	Brisbane	Adelaide	Perth	Canberra	Hobart	Darwin
20-Feb	174.3	178.9	179.7	174.7	175.6	187.6	184.7	180.5
11-Mar	242.1	237.7	240.7	239.5	241.5	237.8	237.6	242.6
18-Mar	277.4	277.6	276.8	273.6	273.0	277.6	275.4	274.9
Change 20-Feb to 18-Mar	103.1	98.7	97.1	98.9	97.4	90.0	90.7	94.4
Change from previous week	35.3	39.9	36.1	34.1	31.5	39.8	37.8	32.3

Source: ACCC calculations based on data from Informed Sources.

Across the 5 largest cities, daily average retail diesel prices on 18 March were 275.7 cpl, an increase of 35.4 cpl from the previous week. The weekly change in retail diesel prices across the 5 largest cities was less than the change in average terminal gate prices.

Retail diesel prices have also been changing on a daily basis. On 18 March, Melbourne had the highest daily average retail prices among the 8 cities, and Perth had the lowest. From the previous week, Melbourne experienced the largest increase in average prices (39.9 cpl).

The size of the retail petrol price increases over the last week was smaller than the initial sharp increases

The following figures illustrate movements in daily average terminal gate and retail regular unleaded petrol prices in each capital city from 1 January to 18 March 2026. For each city, the figures show average retail prices on each day (the purple lines) and average terminal gate prices on the same day (the orange lines).

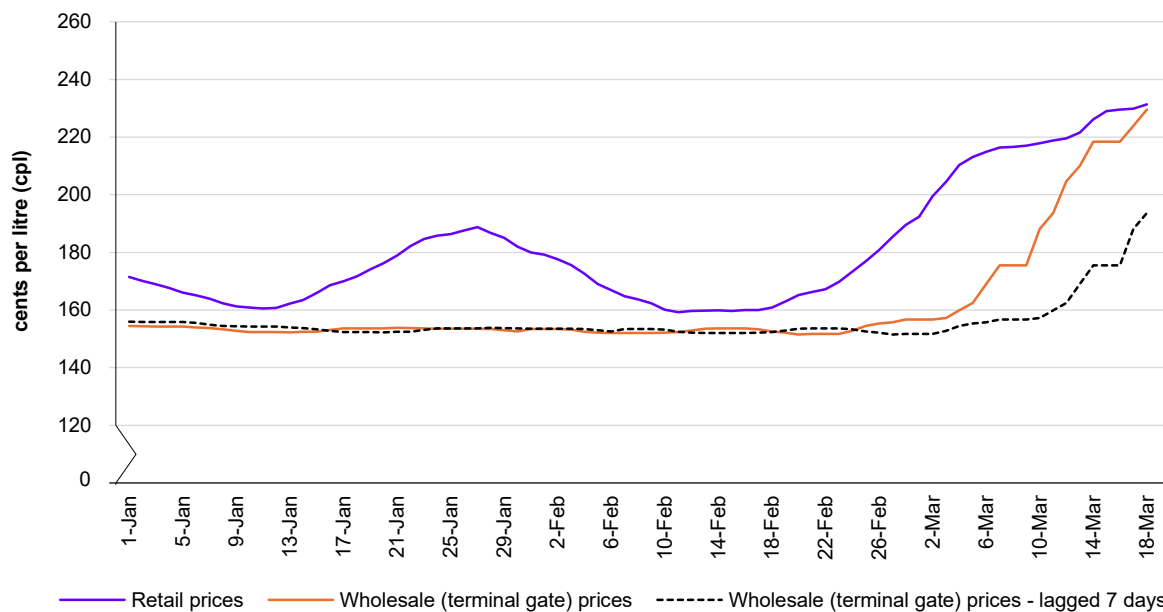
The figures also illustrate average terminal gate prices, where they are lagged by 7 days. Typically, there are lags between changes in wholesale prices and retail prices, because it is generally only when fuel stocks are replenished at a retail site that changes in wholesale prices flow through to retail prices. The ACCC has previously noted the lag in the larger cities is generally between 1 and 2 weeks.

Following the shocks to international markets in late February, daily average retail petrol prices in most cities moved more in line with higher terminal gate prices on the same day, rather than reflecting lagged movements a few days later. The movements were slightly different, particularly across the 5 largest cities, where the petrol price cycles in each city were at different stages when underlying prices began to increase.

The figures show that over the last week, the average difference between daily average terminal gate prices and retail petrol prices has reduced.

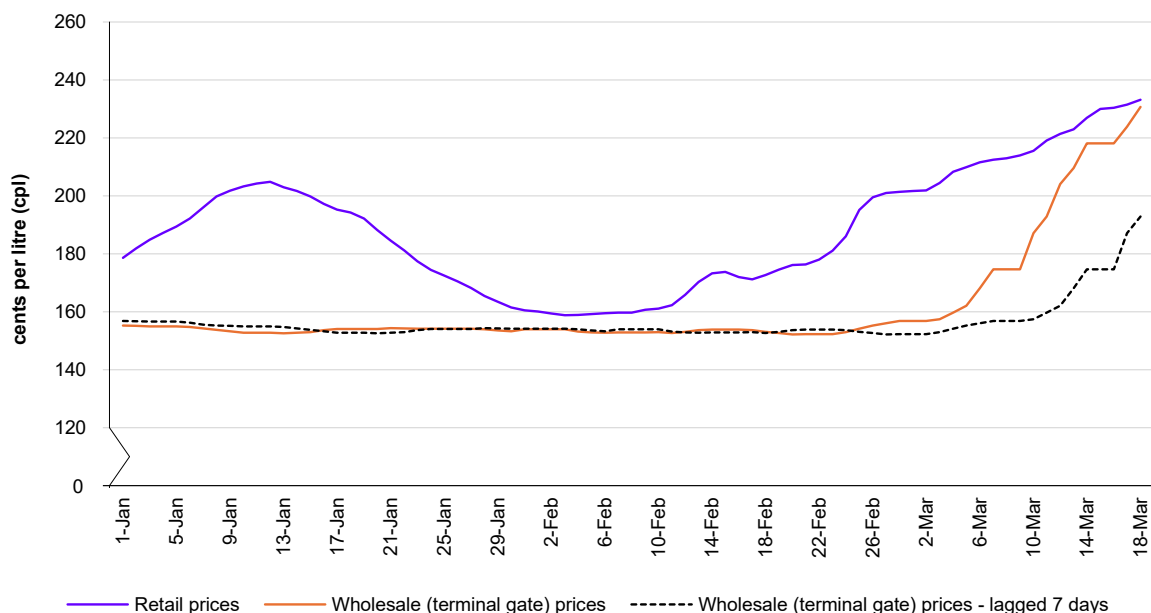
Some fuel businesses have told the ACCC that, rather than retail prices based on the cost of fuel currently in their storage, they have moved to prices based on what it will cost them to restock at current prices. They stated that they made this change in response to the degree of risk and volatility in international price movements and the need on a cashflow basis to be able to meet the likely restock cost.

Figure 2 – Sydney daily average retail regular petrol prices, and average terminal gate prices (lagged 7 days)



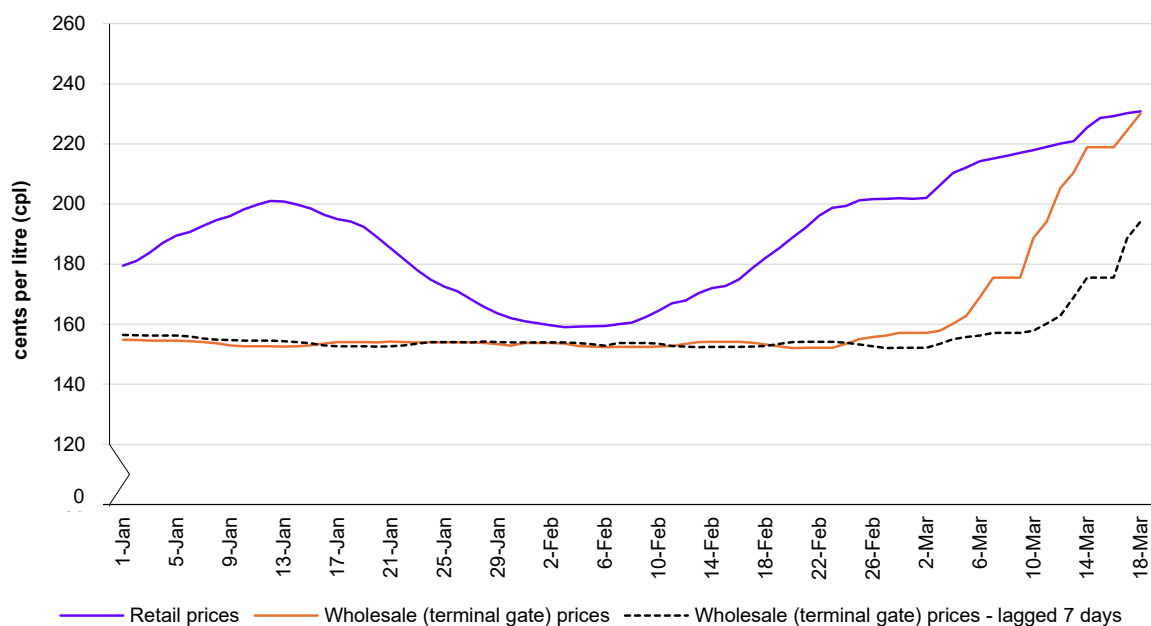
Source: ACCC calculations based on data from Informed Sources and data published on the Australian Institute of Petroleum website.

Figure 3 – Melbourne daily average retail regular petrol prices, and average terminal gate prices (lagged 7 days)



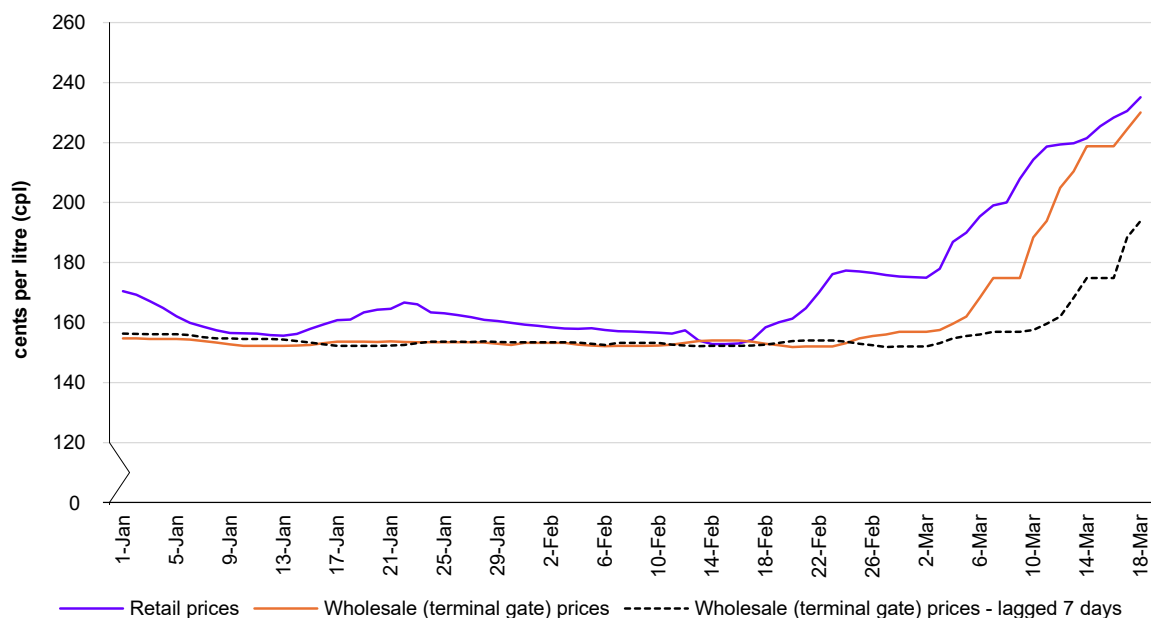
Source: ACCC calculations based on data from Informed Sources and data published on the Australian Institute of Petroleum website.

Figure 4 – Brisbane daily average retail regular petrol prices, and average terminal gate prices (lagged 7 days)



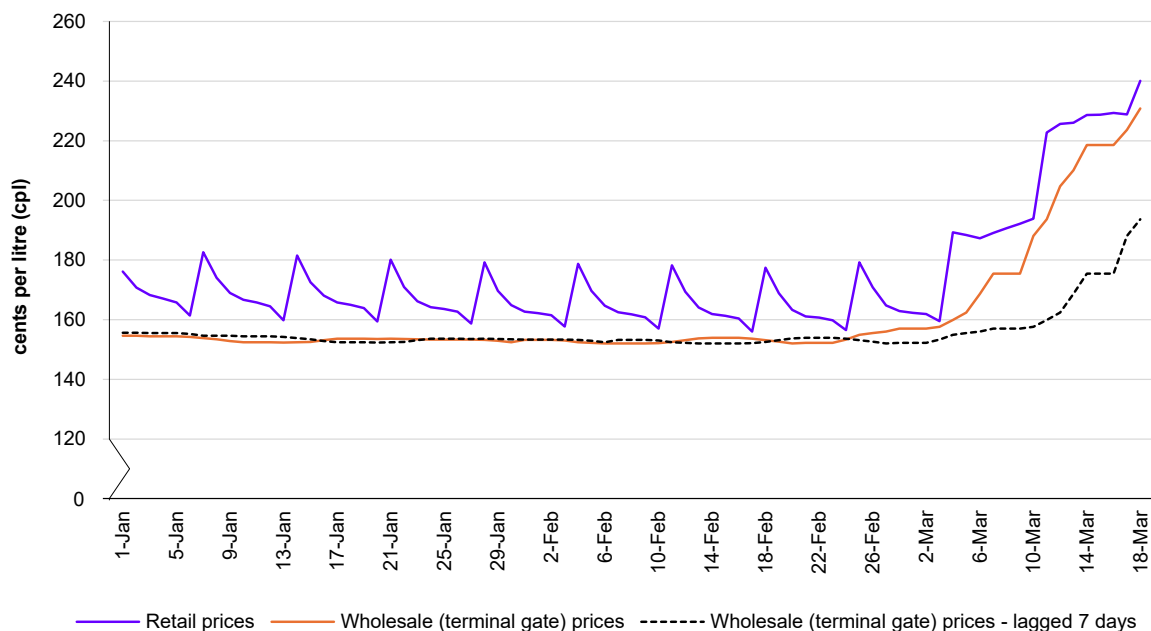
Source: ACCC calculations based on data from Informed Sources and data published on the Australian Institute of Petroleum website.

Figure 5 – Adelaide daily average retail regular petrol prices, and average terminal gate prices (lagged 7 days)



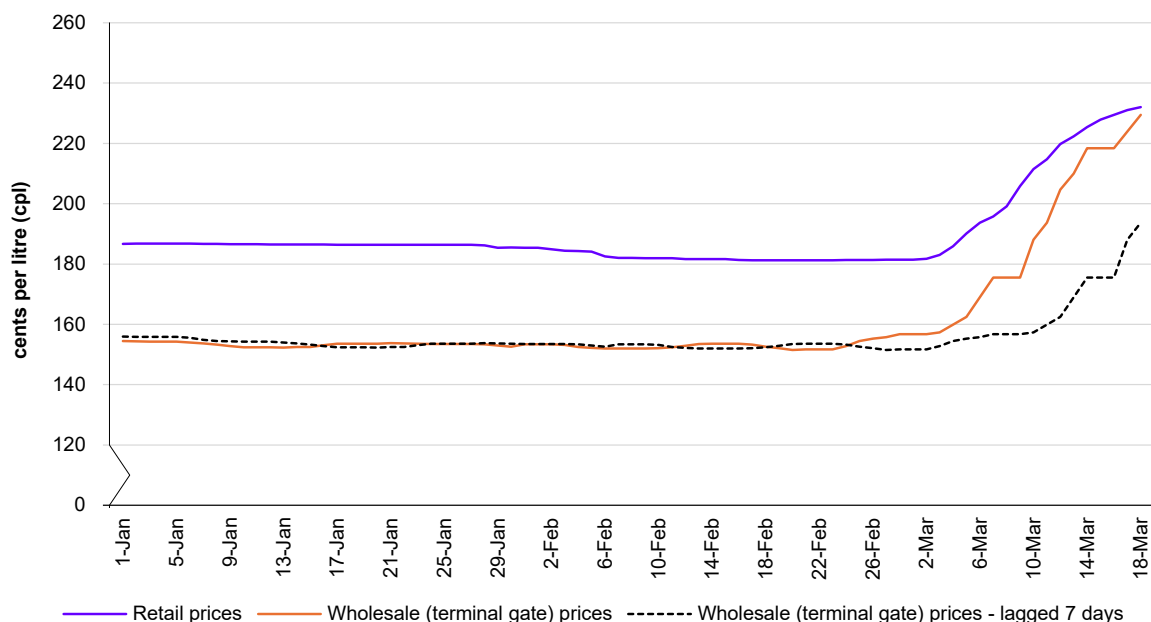
Source: ACCC calculations based on data from Informed Sources and data published on the Australian Institute of Petroleum website.

Figure 6 – Perth daily average retail regular petrol prices, and average terminal gate prices (lagged 7 days)



Source: ACCC calculations based on data from Informed Sources and data published on the Australian Institute of Petroleum website.

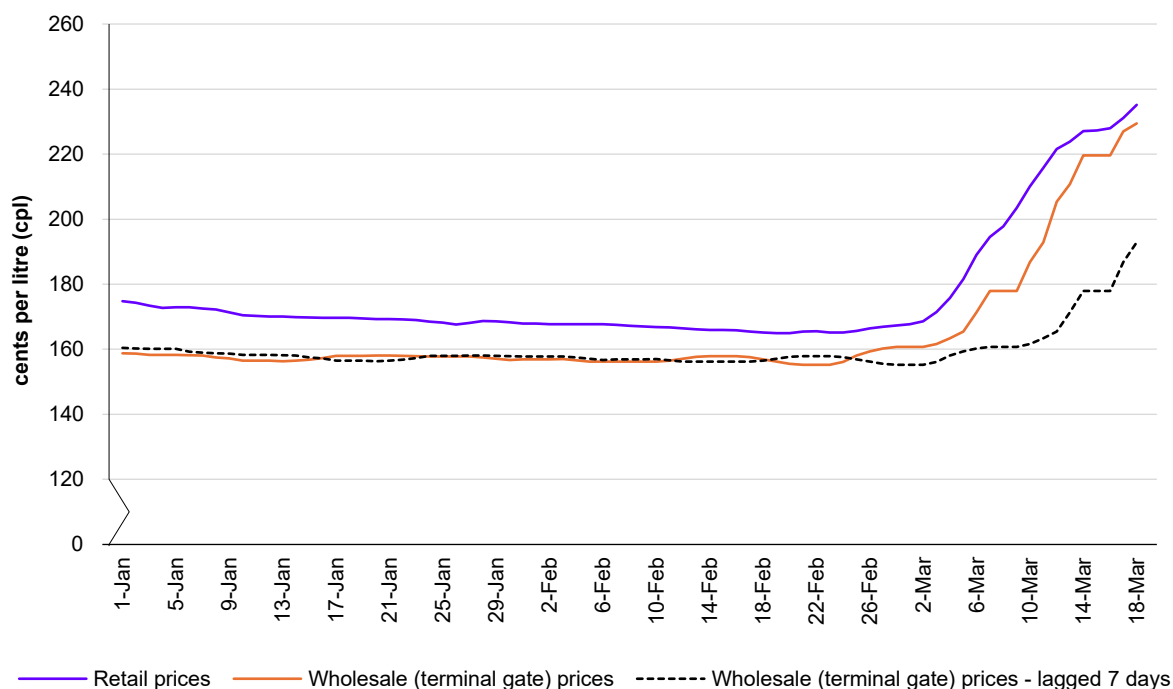
Figure 7 – Canberra daily average retail regular petrol prices, and average terminal gate prices (lagged 7 days)



Source: ACCC calculations based on data from Informed Sources, and data published on the Australian Institute of Petroleum website.

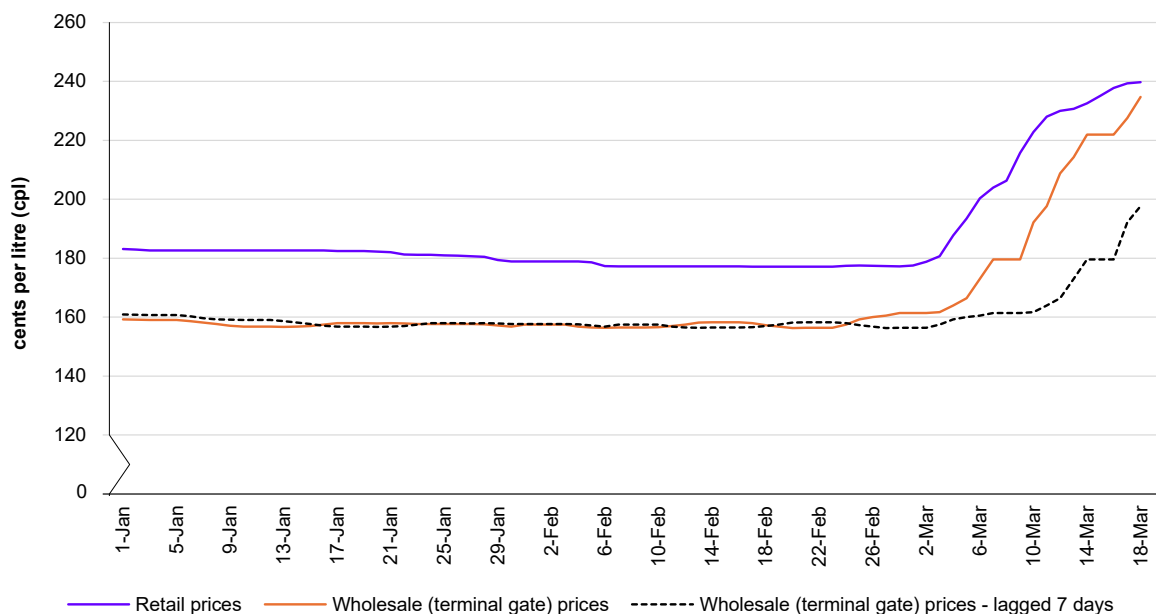
Note: Sydney terminal gate prices are used as a proxy for Canberra.

Figure 8 – Hobart daily average retail regular petrol prices, and average terminal gate prices (lagged 7 days)



Source: ACCC calculations based on data from Informed Sources, and data published on the Australian Institute of Petroleum website.

Figure 9 – Darwin daily average retail regular petrol prices, and average terminal gate prices (lagged 7 days)



Source: ACCC calculations based on data from Informed Sources, and data published on the Australian Institute of Petroleum website.

Retail petrol and diesel prices moved at different paces in different in regional locations

The following table shows movements in daily average retail regular unleaded petrol and diesel prices in around 190 regional locations across Australia, between 20 February and 18 March 2026. Retail petrol and diesel prices in regional locations have also increased rapidly following the international price shocks.

There have been sharp price changes, on almost a daily basis, which differ between regional locations, and comparisons between daily average prices in different locations should be treated with caution. The pace of these price movements is unusual in regional locations, which often respond more slowly to movements in underlying prices. The current environment, however, is very different to other recent international events and other supply issues are present in a range of locations.

The size of price increases in specific locations may be affected by a range of factors, including the stability of local fuel supply, and the level of unexpected demand.

Table 6 – Daily average retail regular unleaded petrol and regular diesel prices – cents per litre

Location	PETROL			DIESEL		
	20 Feb	18 Mar	Change	20 Feb	18 Mar	Change
Sydney	165.2	231.3	66.1	174.3	277.4	103.1
Melbourne	176.1	233.1	57.0	178.9	277.6	98.7
Brisbane	188.8	230.8	42.0	179.7	276.8	97.1
Adelaide	161.3	235.1	73.8	174.7	273.6	98.9
Perth	163.3	240.1	76.8	175.6	273.0	97.4
5 largest cities	170.9	234.1	63.2	176.6	275.7	99.1
Canberra	181.2	232.0	50.8	187.6	277.6	90.0
Hobart	165.0	235.2	70.2	184.7	275.4	90.7
Darwin	177.1	239.7	62.6	180.5	274.9	94.4
New South Wales						
Albury	169.6	233.6	64.0	183.2	276.6	93.4
Armidale	172.3	228.3	56.0	189.1	272.1	83.0
Ballina	173.6	236.8	63.2	190.9	283.7	92.8
Batemans Bay	169.9	232.6	62.7	178.6	276.8	98.2
Bathurst	156.8	233.3	76.5	175.1	282.4	107.3
Bega	178.3	240.0	61.7	187.6	283.3	95.7
Broken Hill	173.9	240.2	66.3	185.6	288.5	102.9
Bulahdelah	163.5	233.4	69.9	182.2	284.1	101.9
Buronga	172.2	254.9	82.7	179.9	296.9	117.0
Casino	176.2	235.8	59.6	188.7	284.7	96.0
Central Coast	164.8	233.8	69.0	186.8	278.4	91.6
Coffs Harbour	168.4	237.9	69.5	185.1	282.8	97.7
Cooma	172.3	237.8	65.5	179.5	278.6	99.1
Coonabarabran	167.9	229.9	62.0	195.9	275.4	79.5
Cootamundra	173.6	254.3	80.7	183.1	286.5	103.4
Cowra	183.1	236.6	53.5	197.9	289.5	91.6
Deniliquin	187.1	242.9	55.8	191.9	285.7	93.8
Dubbo	169.2	234.3	65.1	179.0	283.8	104.8
Forbes	175.2	240.0	64.8	174.9	285.3	110.4
Forster	168.6	231.5	62.9	192.2	275.9	83.7
Gilgandra	170.0	245.0	75.0	177.3	286.8	109.5
Glen Innes	166.4	238.2	71.8	174.2	279.6	105.4
Goulburn	172.6	232.4	59.8	175.7	277.1	101.4
Grafton	172.7	233.5	60.8	186.3	275.4	89.1
Griffith	171.8	236.2	64.4	182.5	280.7	98.2

Location	PETROL			DIESEL		
	20 Feb	18 Mar	Change	20 Feb	18 Mar	Change
Gundagai	167.1	229.7	62.6	183.6	282.4	98.8
Gunnedah	156.6	223.7	67.1	177.3	282.9	105.6
Hay	186.5	249.9	63.4	192.9	290.2	97.3
Inverell	178.6	237.9	59.3	183.2	282.0	98.8
Jerilderie	189.9	246.9	57.0	191.5	284.7	93.2
Kempsey	175.1	243.1	68.0	188.0	288.2	100.2
Leeton	178.9	235.5	56.6	189.9	280.4	90.5
Lismore	172.4	240.0	67.6	188.8	288.1	99.3
Lithgow	168.2	238.8	70.6	187.3	273.7	86.4
Merimbula	189.6	244.2	54.6	187.5	279.5	92.0
Mittagong	170.5	235.1	64.6	182.2	277.8	95.6
Moama	168.7	234.5	65.8	183.1	279.9	96.8
Moree	176.9	238.6	61.7	188.9	281.7	92.8
Moruya	169.2	233.0	63.8	175.1	272.7	97.6
Moss Vale	171.1	232.9	61.8	180.4	277.8	97.4
Mudgee	191.2	236.0	44.8	203.2	274.4	71.2
Murwillumbah	172.3	239.9	67.6	186.2	281.4	95.2
Muswellbrook	163.8	232.7	68.9	185.9	277.9	92.0
Narrabri	175.9	246.1	70.2	181.5	287.3	105.8
Newcastle	162.3	234.4	72.1	178.0	278.7	100.7
Nowra	161.1	234.1	73.0	172.2	276.5	104.3
Nyngan	171.6	233.9	62.3	180.7	283.2	102.5
Oberon	161.4	235.6	74.2	177.4	285.9	108.5
Orange	170.9	237.4	66.5	179.4	277.1	97.7
Parkes	171.7	236.9	65.2	177.6	284.5	106.9
Port Macquarie	167.1	234.1	67.0	190.9	281.0	90.1
Queanbeyan	169.7	233.8	64.1	183.7	276.7	93.0
Singleton	174.0	232.8	58.8	185.4	275.9	90.5
Tamworth	168.7	236.0	67.3	180.3	280.8	100.5
Taree	170.0	237.1	67.1	190.3	283.2	92.9
Temora	169.9	240.8	70.9	179.6	279.6	100.0
Tumut	181.4	237.3	55.9	194.5	282.2	87.7
Tweed Heads South	169.9	233.0	63.1	188.4	276.3	87.9
Ulladulla	181.0	245.5	64.5	192.9	286.8	93.9
Wagga Wagga	168.3	231.3	63.0	172.4	275.5	103.1
Wauchope	171.3	236.2	64.9	180.0	281.3	101.3
Wellington	188.3	248.1	59.8	178.6	284.7	106.1

Location	PETROL			DIESEL		
	20 Feb	18 Mar	Change	20 Feb	18 Mar	Change
West Wyalong	174.2	241.1	66.9	184.2	285.0	100.8
Wollongong	165.4	233.6	68.2	177.5	279.9	102.4
Woolgoolga	178.2	235.9	57.7	191.1	284.9	93.8
Yass	177.1	238.7	61.6	187.5	278.8	91.3
Northern Territory						
Alice Springs	194.0	252.0	58.0	190.5	284.6	94.1
Katherine	179.3	243.6	64.3	176.2	267.1	90.9
Tennant Creek	195.3	231.6	36.3	198.4	261.9	63.5
Queensland						
Atherton	177.7	241.7	64.0	194.5	279.1	84.6
Ayr	167.7	238.5	70.8	174.4	282.2	107.8
Biloela	177.2	238.6	61.4	178.9	271.4	92.5
Blackall	205.9	233.9	28.0	189.8	280.0	90.2
Blackwater	199.9	232.9	33.0	183.9	274.9	91.0
Bowen	175.5	235.4	59.9	180.7	277.1	96.4
Bundaberg	160.9	235.7	74.8	169.8	278.6	108.8
Caboolture	207.4	232.6	25.2	182.9	280.1	97.2
Cairns	164.7	234.1	69.4	177.8	276.9	99.1
Charleville	194.9	228.9	34.0	186.4	275.4	89.0
Charters Towers	178.9	240.4	61.5	183.9	287.1	103.2
Childers	183.7	238.1	54.4	188.4	282.9	94.5
Cloncurry	194.9	268.9	74.0	189.5	284.5	95.0
Cunnamulla	202.4	256.9	54.5	193.4	298.3	104.9
Dalby	159.9	231.5	71.6	176.7	279.7	103.0
Emerald	187.5	244.0	56.5	188.7	284.8	96.1
Gladstone	174.7	237.1	62.4	173.9	278.5	104.6
Gold Coast	167.7	230.9	63.2	177.5	277.0	99.5
Goondiwindi	161.6	231.3	69.7	172.8	278.1	105.3
Gympie	168.0	235.4	67.4	174.7	279.6	104.9
Hervey Bay	164.0	233.8	69.8	174.7	277.2	102.5
Ingham	172.6	233.4	60.8	182.6	277.2	94.6
Innisfail	162.3	235.5	73.2	172.1	279.4	107.3
Ipswich	183.5	230.2	46.7	180.9	278.0	97.1
Kingaroy	165.5	231.0	65.5	175.7	269.7	94.0
Longreach	201.5	245.9	44.4	195.8	291.6	95.8
Mackay	168.7	235.7	67.0	181.9	279.7	97.8
Mareeba	172.3	233.5	61.2	182.9	278.0	95.1

Location	PETROL			DIESEL		
	20 Feb	18 Mar	Change	20 Feb	18 Mar	Change
Maryborough	164.2	231.4	67.2	172.8	268.3	95.5
Miles	157.7	228.9	71.2	171.4	273.9	102.5
Moranbah	189.4	246.8	57.4	193.0	289.0	96.0
Mt Isa	211.2	250.1	38.9	206.2	281.9	75.7
Normanton	198.4	203.4	5.0	200.8	260.8	60.0
Rockhampton	169.2	233.3	64.1	175.0	280.7	105.7
Roma	152.1	230.7	78.6	171.9	278.1	106.2
Sunshine Coast	169.4	234.3	64.9	184.6	279.6	95.0
Toowoomba	166.6	232.8	66.2	172.1	276.4	104.3
Townsville	164.8	234.0	69.2	178.8	278.7	99.9
Tully	165.9	236.4	70.5	175.7	284.0	108.3
Warwick	168.8	230.8	62.0	174.9	279.9	105.0
Weipa	223.9	246.9	23.0	216.9	269.9	53.0
Whitsunday	168.6	231.3	62.7	170.3	269.1	98.8
Yeppoon	176.7	229.9	53.2	192.6	254.1	61.5
South Australia						
Bordertown	173.2	234.7	61.5	174.5	276.7	102.2
Ceduna	184.6	254.3	69.7	190.7	294.7	104.0
Clare	175.2	241.1	65.9	178.5	269.9	91.4
Coober Pedy	220.5	269.1	48.6	224.7	285.7	61.0
Gawler	156.9	241.0	84.1	176.9	272.0	95.1
Kadina	174.9	238.2	63.3	177.9	275.5	97.6
Keith	163.4	231.9	68.5	170.1	269.6	99.5
Loxton	173.2	234.7	61.5	178.1	274.5	96.4
Mt Gambier	160.2	232.9	72.7	167.2	275.3	108.1
Murray Bridge	177.9	236.2	58.3	192.1	264.0	71.9
Naracoorte	174.6	238.6	64.0	183.4	277.8	94.4
Port Augusta	168.0	235.4	67.4	178.5	274.5	96.0
Port Lincoln	179.8	238.2	58.4	176.4	277.6	101.2
Port Pirie	178.6	238.1	59.5	188.9	275.9	87.0
Renmark	180.2	238.7	58.5	178.1	275.4	97.3
Tailem Bend	176.9	236.9	60.0	181.7	276.0	94.3
Victor Harbour	156.0	236.5	80.5	170.9	273.5	102.6
Whyalla	175.7	238.8	63.1	182.2	277.9	95.7
Tasmania						
Burnie	164.6	233.1	68.5	180.5	275.2	94.7
Campbell Town	180.3	236.4	56.1	188.6	279.2	90.6

Location	PETROL			DIESEL		
	20 Feb	18 Mar	Change	20 Feb	18 Mar	Change
Devonport	170.5	233.3	62.8	179.7	276.0	96.3
Huonville	163.7	237.9	74.2	178.5	274.4	95.9
Launceston	168.5	234.7	66.2	176.2	276.3	100.1
New Norfolk	181.2	238.0	56.8	188.7	277.5	88.8
Queenstown	174.9	232.9	58.0	180.7	276.9	96.2
Smithton	183.7	238.8	55.1	185.1	268.4	83.3
Sorell	166.0	235.9	69.9	186.9	278.3	91.4
Ulverstone	185.6	238.2	52.6	192.6	282.1	89.5
Wynyard	170.4	233.3	62.9	182.5	276.6	94.1
Victoria						
Ararat	159.4	231.7	72.3	180.0	283.0	103.0
Bairnsdale	170.5	241.4	70.9	177.7	285.1	107.4
Ballarat	161.9	235.1	73.2	174.3	281.2	106.9
Benalla	168.0	237.0	69.0	177.5	276.1	98.6
Bendigo	165.5	234.1	68.6	176.7	278.4	101.7
Cobram	170.7	235.8	65.1	176.3	251.7	75.4
Colac	170.7	234.6	63.9	185.1	284.7	99.6
Corryong	185.9	247.5	61.6	187.4	305.8	118.4
Echuca	162.0	232.6	70.6	178.5	275.1	96.6
Euroa	167.4	236.0	68.6	189.9	279.9	90.0
Geelong	160.2	233.0	72.8	177.9	279.8	101.9
Hamilton	166.4	235.5	69.1	175.9	278.7	102.8
Horsham	175.9	238.3	62.4	177.3	279.8	102.5
Koo Wee Rup	169.9	236.6	66.7			
Kyabram	171.8	234.4	62.6	174.9	291.2	116.3
Lakes Entrance	167.4	231.9	64.5	165.9	270.1	104.2
Leongatha	163.4	236.4	73.0	177.1	228.4	51.3
Mansfield	189.9	244.6	54.7	184.9	279.0	94.1
Mildura	168.3	239.6	71.3	175.3	283.8	108.5
Moe	158.4	233.6	75.2	169.4	275.4	106.0
Morwell	163.0	239.0	76.0	182.1	283.1	101.0
Orbost	179.9	251.1	71.2	179.9	290.3	110.4
Portland	168.9	237.1	68.2	171.6	281.7	110.1
Sale	171.3	237.6	66.3	185.1	280.1	95.0
Seymour	162.5	234.0	71.5	177.9	273.2	95.3
Shepparton	162.1	226.8	64.7	181.2	279.1	97.9
Swan Hill	174.2	239.5	65.3	182.0	280.6	98.6

Location	PETROL			DIESEL		
	20 Feb	18 Mar	Change	20 Feb	18 Mar	Change
Traralgon	161.5	233.7	72.2	180.2	273.6	93.4
Wallan	163.2	229.3	66.1	177.9	272.4	94.5
Wangaratta	167.0	235.6	68.6	180.7	275.3	94.6
Warrnambool	164.8	235.4	70.6	179.2	268.0	88.8
Wodonga	174.1	234.2	60.1	183.0	280.3	97.3
Wonthaggi	155.6	242.7	87.1	170.1	286.8	116.7
Yarrawonga	183.9	242.8	58.9	198.9	287.7	88.8
Western Australia						
Albany	168.5	241.7	73.2	174.8	280.7	105.9
Boulder	174.9	236.9	62.0	187.9	275.2	87.3
Bridgetown	172.8	232.8	60.0	177.8	274.8	97.0
Broome	219.9	269.8	49.9	206.2	284.3	78.1
Bunbury	165.5	232.5	67.0	169.6	270.8	101.2
Busselton	166.4	234.4	68.0	175.0	272.1	97.1
Carnarvon	198.4	254.1	55.7	180.9	284.9	104.0
Collie	183.8	242.5	58.7	192.8	282.1	89.3
Dongara	167.8	238.7	70.9	175.7	279.0	103.3
Esperance	173.5	243.5	70.0	176.4	281.3	104.9
Geraldton	166.5	235.9	69.4	172.3	273.7	101.4
Kalgoorlie	177.2	241.1	63.9	187.6	278.3	90.7
Karratha	186.3	241.5	55.2	193.5	276.9	83.4
Manjimup	170.9	238.7	67.8	177.9	280.1	102.2
Mount Barker	170.5	237.2	66.7	176.6	278.5	101.9
Port Hedland	197.9	251.5	53.6	194.7	281.4	86.7
Waroon	176.1	238.1	62.0	187.1	279.1	92.0

Source: ACCC calculations based on data from Informed Sources.

Notes: Daily average prices represent an average of price levels throughout the given day.

The were no diesel prices available for Koo Wee Rup.

Australian Competition and Consumer Commission

Land of the Ngunnawal people
23 Marcus Clarke Street, Canberra, Australian Capital Territory, 2601
© Commonwealth of Australia 2026

This work is copyright. In addition to any use permitted under the *Copyright Act 1968*, all material contained within this work is provided under a Creative Commons Attribution 4.0 Australia licence, with the exception of:

- the Commonwealth Coat of Arms
- the ACCC and AER logos
- any illustration, diagram, photograph or graphic over which the Australian Competition and Consumer Commission does not hold copyright, but which may be part of or contained within this publication.

The details of the relevant licence conditions are available on the Creative Commons website, as is the full legal code for the CC BY 4.0 AU licence.

Requests and inquiries concerning reproduction and rights should be addressed to the General Manager, Strategic Communications, ACCC, GPO Box 3131, Canberra ACT 2601.

Important notice

The information in this publication is for general guidance only. It does not constitute legal or other professional advice, and should not be relied on as a statement of the law in any jurisdiction. Because it is intended only as a general guide, it may contain generalisations. You should obtain professional advice if you have any specific concern.

The ACCC has made every reasonable effort to provide current and accurate information, but it does not make any guarantees regarding the accuracy, currency or completeness of that information.

The ACCC obtains confidential proprietary data from Argus Media under licence, from which data the ACCC conducts and publishes its own calculations and forms its own opinions. Argus Media does not make or give any warranty, express or implied, as to the accuracy, currency, adequacy or completeness of its data and it shall not be liable for any loss or damage arising from any party's reliance on, or use of, the data provided or the ACCC's calculations.

Parties who wish to re-publish or otherwise use the information in this publication must check this information for currency and accuracy prior to publication. This should be done prior to each publication edition, as ACCC guidance and relevant transitional legislation frequently change. Any queries parties have should be addressed to the General Manager, Strategic Communications, ACCC, GPO Box 3131, Canberra ACT 2601.

www.accc.gov.au