



Proposed development of New Brisbane Cruise Terminal

Submission in response to anonymous
summaries of confidential interested party
submissions by Port of Brisbane and
Carnival Australia

19 December 2017

Contents		Page
1	Overview	1
2	The Proposed Development is inherently pro-competitive	1
3	Carnival's Australian operations and commercial rationale	2
4	All cruise operators will have more access to capacity with the Proposed Development than without it	3
4.1	Overview	3
4.2	265 additional contestable berthing days will be available in Brisbane with the New Cruise Facility	3
4.3	Availability of berthing days during peak cruise season	4
4.4	Carnival's intended use of New Cruise Facility	4
4.5	Available capacity and days of operation for other cruise operators	4
4.6	Carnival is committed to year round Australian operations	8
5	Competition from alternative terminals	9
6	Term of authorisation	10
7	Cruising Schedules	11
7.1	Schedule 1: 2015 Sydney deployments: dates (length) of deployment	11
7.2	Schedule 2: 2016 Sydney deployments	12
7.3	Schedule 3: 2017 Sydney deployments	14
7.4	Schedule 4: 2018 Sydney deployments	16
7.5	Schedule 5: 2015 Brisbane deployments	18
7.6	Schedule 6: 2016 Brisbane deployments	19
7.7	Schedule 7: 2017 Brisbane deployments	20
7.8	Schedule 8: 2018 Brisbane deployments	21

1 Overview

On 21 November, the ACCC made available to the Applicants anonymous summaries of two confidential submissions made by interested parties to the ACCC. The Applicants understand that these interested parties have claimed confidentiality over the details contained within their submissions, as well as their identities, both of which have been withheld from the public register. No other interested parties have made submissions raising concerns in relation to the Proposed Development or the Agreements.

The Applicants make this submission in response to the issues raised in the anonymous summaries. In addition to the significant public benefits identified in the Applicants' submission in support of their authorisation application,¹ dated 5 October 2017 (**Applicants' Submission**):

- The Proposed Development will result in more competition within the markets for the provision of cruise terminal services than in the counterfactual;
- All cruise operators will have more choice and more certain and efficient berthing options with the Proposed Development than in the counterfactual, providing security for the longevity and growth of the cruise industry in Brisbane;
- For the first time, large cruise ships of over 270m will be able to home port in Brisbane as they are not currently able to be accommodated at Portside; and
- the proposed take or pay obligations and corresponding preferential berthing rights are necessary and reasonable to support the commitment to and development of the New Cruise Facility. Without these commercial arrangements, PBPL would not proceed with the Proposed Development, depriving Brisbane of additional dedicated cruise capacity and resulting in fewer benefits for the travelling public, tourism industry and the wider Queensland economy, as set out in further detail in the Applicants' Submission.²

In this context the Applicants note that Carnival is the only cruise operator that currently home ports vessels in Brisbane and the only cruise operator that has ever operated year round itineraries ex-Brisbane.

2 The Proposed Development is inherently pro-competitive

As demonstrated in the Applicants' Submission, the Proposed Development is inherently pro-competitive. The Proposed Development will result in additional capacity being made available in Brisbane, providing cruise operators and their passengers with a choice of terminals and the ability for cruise ships of over 270m in length to home port in Brisbane for the first time. The location of the New Cruise Facility at the mouth of the Brisbane River also creates significant operational efficiencies for cruise operators, reducing navigation time by up to two hours and accommodating the turning circle of large vessels.

As stated in the Applicants' Submission, PBPL will not make the investment in building the New Cruise Facility unless it can guarantee a base level of custom and revenue, in order to make its investment viable. Initially, PBPL engaged with all relevant cruise lines operating in Australia in order to negotiate commercial contracts that would provide it with the financial commitment from participants in the cruise industry needed to proceed with the Proposed Development. Despite their initial participation in meetings and negotiations, no other operator decided to commit to the Proposed

¹ See Applicants' Submission, pp 39-49

² pp 43-44

Development. Carnival was ultimately the only operator that decided to commit to the New Cruise Facility and proceed with negotiating a commercial contract with PBPL. This is the case even though the New Cruise Facility, built on the basis of Carnival's significant commitment, will be available for use by any cruise operator. This will be especially beneficial for those cruise operators that do not currently home port in Brisbane because they do not deploy ships of a size capable of berthing at Portside.

Carnival is prepared to make a substantial financial commitment, via its take or pay obligations, equivalent to 100 berthing days per annum. In return for this, it will receive preferential berthing rights for no more than 100 days per annum, leaving 265 days contestable by any other cruise line. Once these "Foundation Berthing Days" are exhausted, all cruise operators can compete on a common user basis for access to berthing slots in accordance with the berthing rules. The berthing rules have been made publicly available as part of the Applicants' Submission. Carnival is limited in its ability to use its Foundation Berthing Days over a maximum of 4 days in any one week. These preferential berthing rights are directly proportionate to the commitment that Carnival has made. They do not have the effect of tying up more days than Carnival requires. Rather, in 2017-18, Carnival will berth in Brisbane for 148 days, [CONFIDENTIAL: RESTRICTION OF PUBLICATION CLAIMED].

Carnival would not have the incentive to guarantee a level of financial commitment to the Proposed Development without receiving preferential berthing rights. Without the benefit of these rights, Carnival's competitors would simply free ride on Carnival's commitment to the new terminal. Therefore the Proposed Development would not proceed in the absence of the take or pay commitments and corresponding preferential rights.

3 Carnival's Australian operations and commercial rationale

Carnival is the only cruise operator that has committed to year round home porting of vessels in Australia. While other cruise operators, including Royal Caribbean and Norwegian Cruise Line (see Schedules in 7), offer cruise itineraries during the summer cruise season (October – April), they do not generally operate in the winter months, instead deploying their vessels in the Northern hemisphere during the Australian winter.

Carnival is currently the only cruise operator that home ports in Brisbane and is the only cruise operator to have operated year-round from Brisbane. Approximately 50% of Carnival's current Australian fleet is of a size capable of berthing at the existing Portside cruise terminal in Brisbane, however it intends to bring larger ships into Brisbane once the New Cruise Facility is available.

Brisbane itineraries are a very important part of Carnival's Australian operations. Nationally, Carnival operates set itinerary patterns of varying lengths, which are scheduled to: maximise operational and network efficiencies, take into consideration the availability of berthing slots within the region, and meet customer preferences for short and long cruising itineraries. Carnival has had particular success with the offer of 7 day Pacific Islands cruises ex-Brisbane, which primarily depart on Fridays or Saturdays. It also operates shorter and longer itineraries ex-Brisbane.

Consistent with its commitment to operate year round ex-Brisbane, Carnival has sought to put in place secure, long-term contracts for terminal facilities within Brisbane. [CONFIDENTIAL: RESTRICTION OF PUBLICATION CLAIMED] Carnival's need for commercial and operational certainty in order to continue to operate and expand its Brisbane presence is the key driver for its decision to enter into the Agreements with PBPL in order to support the Proposed Development.

The Proposed Development provides Carnival with the opportunity to secure its long term presence in Brisbane. At the same time, it will enable Carnival to deploy larger ships into Brisbane, consistent with global trends towards larger ships and the preferences of many customers, while enabling Carnival to more efficiently operate its services.

As discussed in the Applicants' Submission, significant public benefits will result from this, in terms of customer amenity and the value to the Brisbane and broader Queensland economy of year round home ported vessels in Brisbane, with the expected significant increase in passenger volume able to be accommodated as larger ships can berth and home port.

4 All cruise operators will have more access to capacity with the Proposed Development than without it

4.1 Overview

All cruise operators will have **more** access to cruise terminal capacity within Brisbane and nationally with the Proposed Development than without. For those cruise operators that only deploy vessels within Australia above 270m, the Proposed Development will provide the **only** available capacity for home porting vessels within Brisbane. Carnival's commitment, entitling it to 100 Foundation Berthing Days, does not change the fact that there will be significantly more available capacity in the factual than in the counterfactual.

The anonymous summaries have questioned whether the Foundation Berthing Days will have the effect of foreclosing rival operators' access to the New Cruise Facility or limiting access in peak season or at peak times. A consideration of the existing cruise itineraries and patterns of use of both Brisbane and Sydney terminals by Carnival and other operators demonstrates that this is not the case. In particular:

- All current and potential operators will have more access to homeport and turnaround berthing in Brisbane with the Proposed Development, which is underpinned by the take or pay commitment, than without it. The take or pay obligations are limited to less than one third of available berthing days throughout the year, such that the majority of available days are available to other cruise operators. The arrangements therefore do not block access to the New Cruise Facility or raise barriers to entry within Brisbane.
- All operators will have sufficient access to the berth for viable operations. In markets throughout Australia and globally, cruise operators successfully operate itineraries with departures on various days of the week and with differing durations. The itinerary patterns at Australian ports with more than one cruise operator, for example Sydney, demonstrate this. While Carnival, as the only operator in Brisbane, has chosen to operate 7 day itineraries departing on Fridays and Saturdays, as well as other shorter and longer itineraries with mid-week departures, this does not mean that these are the only viable itineraries from Brisbane.
- Contrary to assertions in the anonymous summaries, Carnival has no ability or incentive to game its use of Foundation Berthing Days in order to prevent access to the New Cruise Facility by other cruise operators. **[CONFIDENTIAL: RESTRICTION OF PUBLICATION CLAIMED]** The berthing rules ensure that other operators have equal access to the 265 days beyond the Foundation Berthing Days and that at least 3 days per week will be contestable by any operator, including in peak summer season. Other operators will have this access, despite choosing not to commit to the Proposed Development and having decided not to operate cruise itineraries utilising the existing Portside facility in Brisbane.

4.2 265 additional contestable berthing days will be available in Brisbane with the New Cruise Facility

Under the Proposed Agreements, Carnival will have preferential access to not more than 100 Foundation Berthing Days, which it has made a take or pay commitment to purchase for **[CONFIDENTIAL: RESTRICTION OF PUBLICATION CLAIMED]** per cruise season. The remaining 265 days of the year are fully contestable by other cruise operators. Access to those days is subject to the berthing rules, which are based on common user principles, and are available on a first in first served basis. The berthing rules determine the process by which berthing slots are allocated to cruise

operators, and guarantee that at least 3 berthing slots are contestable each week, including during peak season. The rules are:

- Booking requests must be made 25 months prior to the start of a cruise season and allocated 24 months out by PBPL;
- Cruise vessels have priority over all other vessels;
- After Foundation Berthing Days, Priority Berthing Days³ and then Ad Hoc Berthing Days are allocated, with priority given to, in order: homeport vessels, turnaround vessels, transit vessels and other vessels;
- No one user will have allocated to it in its initial allocation more than 4 berthing days per week or 18 berthing days in a calendar month; and
- A conflicting bookings resolution mechanism has been established.

4.3 Availability of berthing days during peak cruise season

The Australian summer cruise season operates from October to April each year, a period of 212 days. Under the berthing rules, Carnival may only book the berth on 4 days in any week period. Accordingly, if Carnival were to apply all of its 100 Foundation Berthing Days to the summer peak season, there would be 112 days contestable days across the season, with at least 3 days available in each week to other cruise operators, who will therefore benefit from the increased capacity without having made any commitment to the development of the terminal.

4.4 Carnival's intended use of New Cruise Facility

As discussed above, for many years, Carnival has operated year round cruises ex-Brisbane, providing itineraries of varying lengths that have been consistently scheduled to maximise operational and network considerations, as well as meet customer preferences. It has established its presence in Brisbane without the benefit of any preferential berthing rights.

In the 2017-2018 cruise season, Carnival has 148 berthing days in Brisbane. **[CONFIDENTIAL: RESTRICTION OF PUBLICATION CLAIMED]**. It will not, as the anonymous summaries suggest, restrict its operations to the most popular and profitable summer seasons or seek to game the system for the purposes of hindering the ability of other operators to access the Facility and compete ex-Brisbane. It will simply continue to operate consistent with its commercial assessment of customer demand and operational efficiencies. The security of access provided by the Proposed Agreements, as well as the New Cruise Facility's enhanced efficiency and amenity, will make it more likely that Carnival will expand its current offer, increasing cruise capacity into the market.

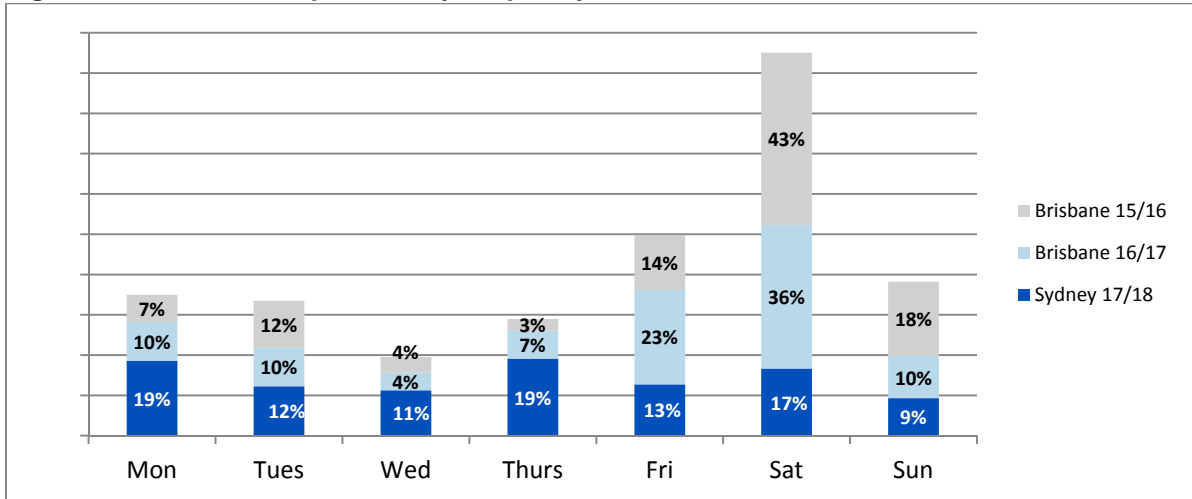
4.5 Available capacity and days of operation for other cruise operators

Different operators offer different itineraries, and have historically done so, with varying lengths and different days of departure according to customer demand, availability of capacity, network and operational considerations, and operator preference. The result is the days a particular cruise line prefers to operate at any particular port are not identical. The varied itinerary patterns of cruise industry participants at ports around the world, including Sydney, demonstrate this.

The data in Figures 1 to 4 below show that a variety of departure days and itinerary lengths are viable and utilised by different operators.

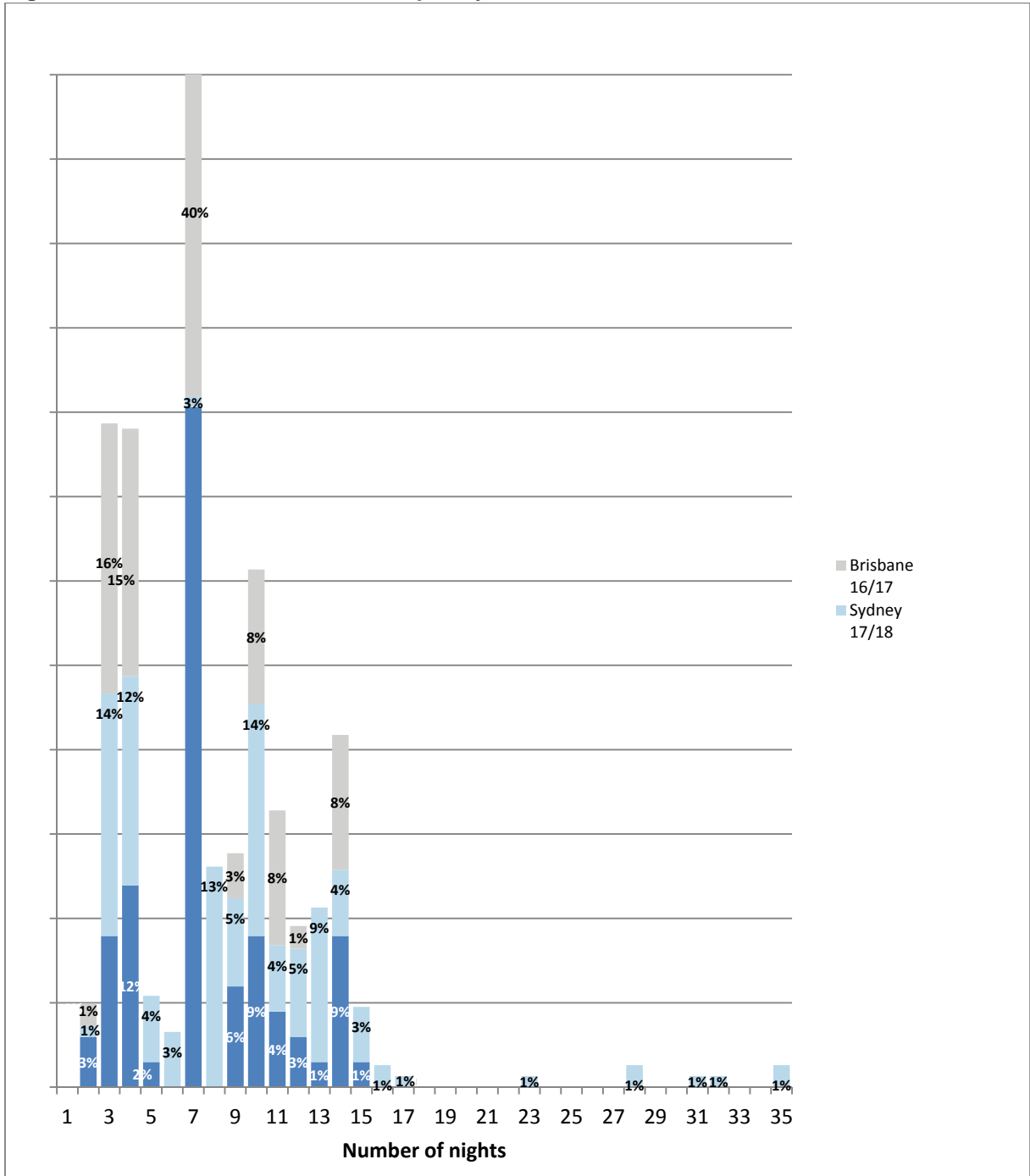
³ Any user can elect to purchase 20 berthing days per annum for a period of 7 years or longer. If they do so, they are entitled to priority berthing for those days, above ad hoc days.

Figure 1: Carnival⁴ departure day frequency



⁴ Representing Carnival's P&O Australia, Princess, Holland America and Carnival Cruise lines.

Figure 2: Carnival⁵ cruise duration frequency



⁵ Representing Carnival's P&O Australia, Princess, Holland America and Carnival Cruise lines.

Figure 3: Royal Caribbean⁶ departure day frequency

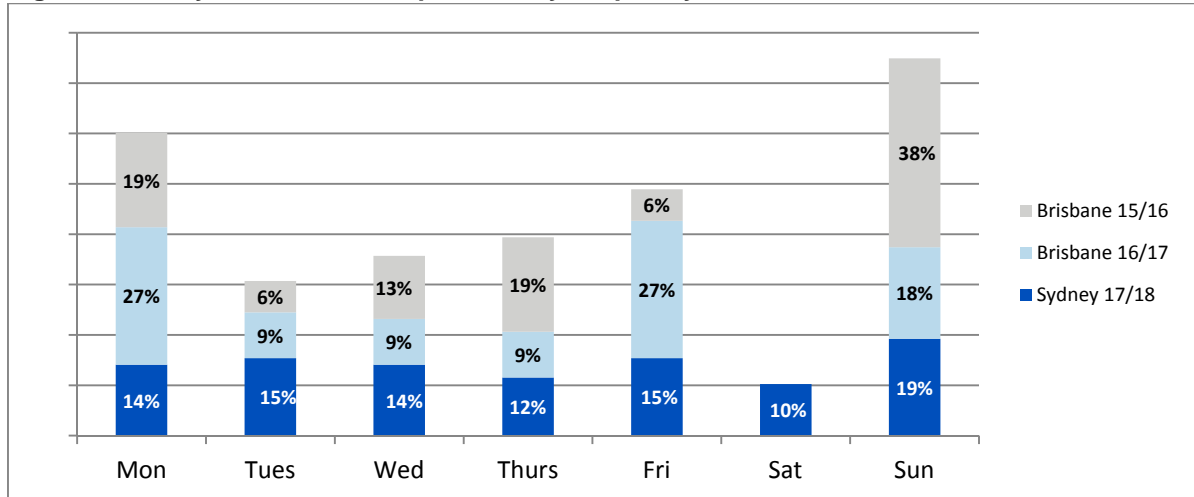
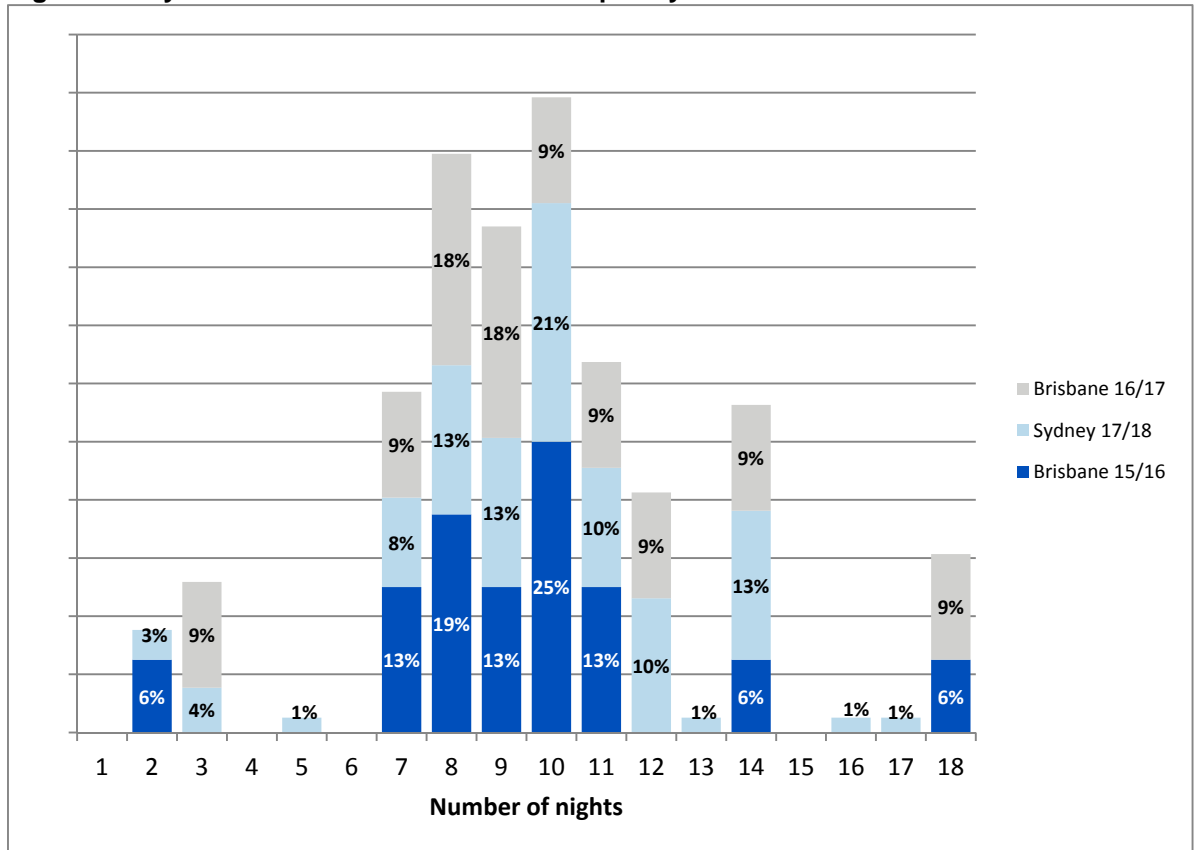


Figure 4: Royal Caribbean⁷ cruise duration frequency



The current and historical cruise itineraries of operators at Sydney and Brisbane cruise terminals are set out in Section 7 below.

⁶ Representing Royal Caribbean's Royal Caribbean International (RCI) and Celebrity cruise lines.

⁷ Representing Royal Caribbean's Royal Caribbean International (RCI) and Celebrity cruise lines.

4.6 Carnival is committed to year round Australian operations

One of the anonymous summaries asserts that Carnival has the additional competitive benefit of being the established cruise operator in Brisbane, suggesting that this will be compounded by its preferential berthing rights as part of the Proposed Development. It is important to consider this assertion in context. Carnival is the only operator that has committed to year round Australian operations and has invested in and established home porting in Brisbane. It has established this position over time and not through any anti-competitive advantage. Other operators, in contrast, simply use their ships in Australia when seasonal demand in the Northern Hemisphere has reduced.

The figures below illustrate the presence of cruise operators in Sydney and Brisbane over time.

Figure 5: 2015-2018 Presence of cruise operators in Brisbane

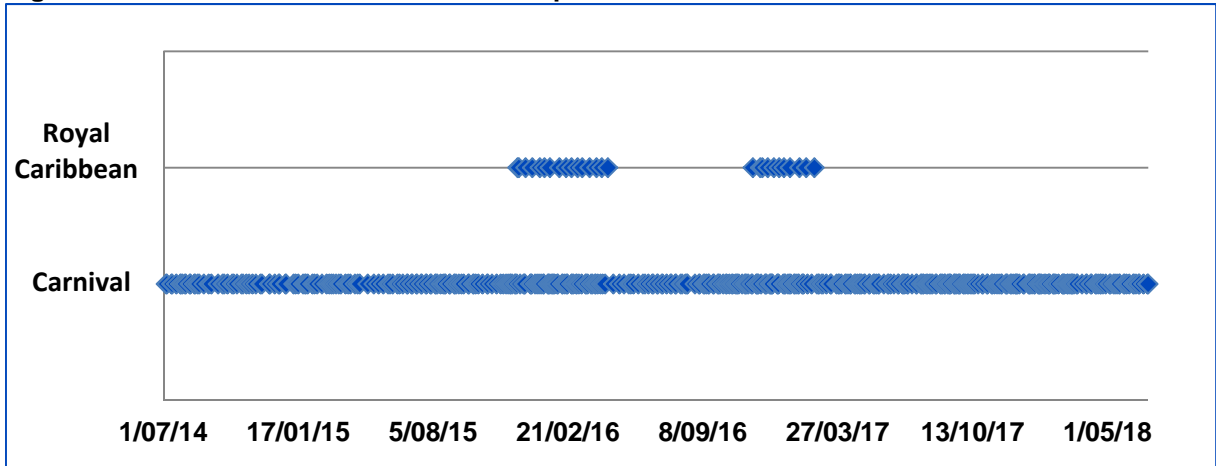
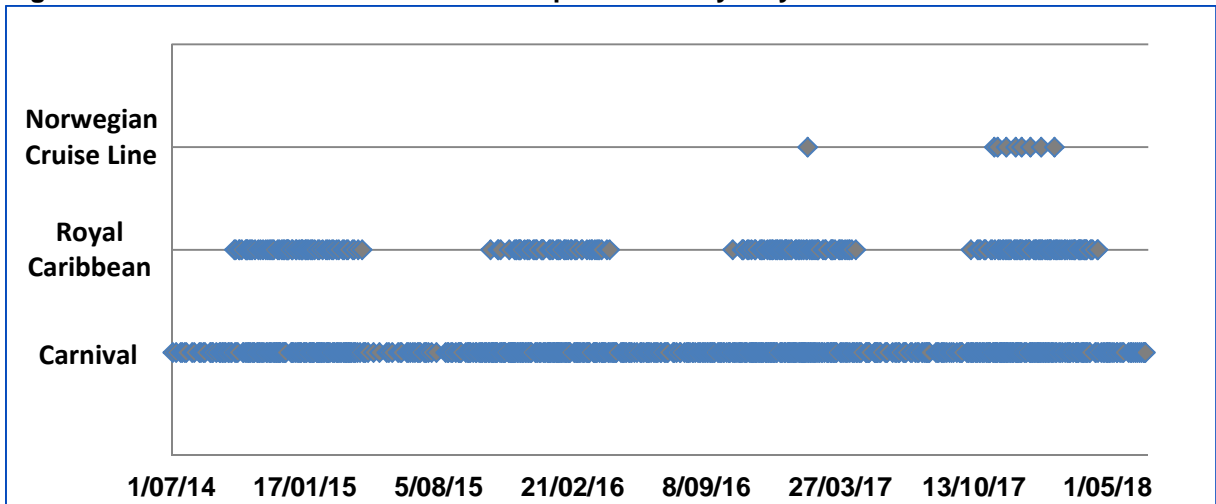


Figure 6: 2015-2018 Presence of cruise operators in Sydney



In 2015, Royal Caribbean began operating itineraries ex-Brisbane using its Legend of the Seas vessel, and homeporting at Portside.⁸ Royal Caribbean then exited Brisbane part way through the

⁸ Royal debut for ship's visit' *Whitsunday Times* (19 June 2015) <https://www.whitsundaytimes.com.au/news/royal-debut-for-ships-visit/2675106/>.

2016-17 cruise season.⁹ It has since sold Splendour of the Seas and Legend of the Seas, its two Australia-based vessels which were of a size capable of berthing at Portside. Royal Caribbean has since chosen not to deploy any of the smaller vessels in its international fleet within Brisbane. Similarly, other cruise operators have decided not to establish operations ex-Brisbane utilising Portside.

Further, there is nothing anti-competitive about Carnival receiving reasonable and proportionate preferential rights in return for its significant commitment to the New Cruise Facility. The opportunity to make a similar commitment was provided to other cruise operators which elected not to take up that opportunity. In circumstances where other cruise operators have chosen not to deploy ships using existing cruise facilities, and not to invest in the construction of a new cruise facility capable of accommodating larger ships, the basis for cruise operators to argue that Carnival has benefited from some kind of anti-competitive advantage is without foundation.

5 Competition from alternative terminals

Currently, cruise operators in Brisbane can only operate ships less than 270 metres, representing a significant limitation on the growth of the cruise industry in Brisbane, in the face of a global trend for larger ships, well beyond 270 metres.

The Applicants' Submission sets out in detail the competition offered by existing cruise terminals within Brisbane and throughout Australia. The Proposed Development will enhance terminal competition by adding efficient capacity into the market. Within Brisbane, it will provide significant choice for operators and their passengers and competition to the existing terminal, Portside. It will ensure that all cruise operators, deploying vessels of all sizes, will have a viable, purpose built cruise terminal and security of access in order to build operations ex-Brisbane.

One of the anonymous summaries has raised a concern that the effect of the take or pay obligations will be that Carnival will switch its volume from existing terminals (i.e. Portside), in favour of the New Cruise Facility. As Carnival is the only operator currently homeporting vessels in Brisbane, the anonymous summary suggests that this may remove volume from Portside and compromise its ability to compete in the future as it will not be viable without Carnival's business.

The Applicants made a submission on 20 November 2017 addressing Carnival's intentions and incentives to continue to berth vessels at Portside. Carnival has made the decision to commit to the New Cruise Facility which it considers will provide Carnival with the certainty required in order to support its commitment to year round Brisbane operations – a commitment that no other operator has made. The New Cruise Facility has better amenities, as well as enabling Carnival to achieve operational efficiencies and deploy larger cruise ships favoured by many customers. If Carnival switched all its utilisation from Portside to the New Cruise Facility this would be a manifestation of competition. It has the choice of facilities and chooses to utilise the one it considers to be superior. This would be a pro-competitive outcome. Even if Portside was ultimately to become unviable as a result of the loss of Carnival's business, this is not a competition problem as volume would have switched to the more efficient competitor, able to offer services to all vessel sizes and willing to provide long term security for cruise operators, their passengers, and the broader cruise industry. This is a pro-competitive outcome.

However, Portside can continue to compete for vessels under 270 metres, in competition with the New Cruise Facility.

⁹ Legend of the Seas sails away from Cairns for last time in 2017' *Cairns Post* (13 April 2016) <http://www.cairnspost.com.au/business/legend-of-the-seas-sails-away-from-cairns-for-last-time-in-2017/news-story/d5e0d0df489b77a2df312f93abbc8868>

6 Term of authorisation

The Applicants have requested an authorisation term of 18 years, consistent with the length of the Proposed Agreements. A term of authorisation of this length is necessary in order to support the significant investment made in the Proposed Development, including Carnival's commitment to underpin PBPL's investment. A shorter authorisation term would have the effect of discouraging investment in large scale new projects like this one.

The Applicants request that the term of the authorisation should commence at the time that the New Cruise Facility is completed as authorisation to give effect to the Agreements is not required until this stage and it would be counterproductive to commence the authorisation before it was needed.

The Applicants submit that the Proposed Development should be authorised without conditions. Given that the Proposed Development does not lessen competition and would result in significant public benefits, it is not appropriate or necessary to impose any conditions on the grant of authorisation.

7 Cruising Schedules

7.1 Schedule 1: 2015 Sydney deployments: dates (length) of deployment

	Carnival Corporation Lines				Royal Caribbean Corporation Lines	
	P&O (Aus)	Princess	Carnival Cruise	Holland America	RCI	Celebrity
	For all cruises: departure dates (number of nights cruising)					
January	Fri 9 th (9), Sat 10 th (9), Sun 18 th (7), Mon 19 th (5), Sat 24 th (3), Sun 25 th (3), Tues 27 th (10), Wed 28 th (14)	Fri 2 nd (8), Sat 10 th (12), Sun 11 th (13), Sat 24 th (14)	Mon 5 th (10), Wed 7 th (12), Thu 15 th (8), Mon 19 th (10), Fri 23 rd (12), Thu 29 th (10)	Fri 2 nd (14), Fri 16 th (14), Fri 30 th (14)	Sun 4 th (9), Thu 8 th (9), Mon 12 th (10), Tue 13 th (7), Sat 17 th (11), Tue 20 th (11), Thu 22 nd (3), Sun 25 th (11), Wed 28 th (10), Sat 31 st (12)	Sat 3 rd (8), Sun 11 th (14), Sun 18 th (9), Tue 27 th (12)
February	Fri 6 th (4), Tues 10 th (11), Wed 11 th (4), Sun 15 th (4), Thu 19 th (2), Sun 21 st (8)	Tue 3 rd (12), Sat 7 th (13), Fri 20 th (14), Fri 27 th (28)	Wed 4 th (9), Sun 8 th (10), Fri 13 th (10), Wed 18 th (12), Mon 23 rd (11)	Fri 13 th (11)	Thu 5 th (14), Sat 7 th (10), Thu 12 th (14), Tue 17 th (11), Thu 19 th (3), Sun 22 nd (11), Thu 26 th (33), Sat 28 th (8)	
March	Sun 1 st (4), Thu 5 th (7), Thu 12 th (4), Mon 16 th (4), Fri 20 th (3), Mon 23 rd (10)	Fri 6 th (13), Thu 19 th (13), Tue 24 th (17), Fri 27 th (19)	Mon 2 nd (8), Fri 6 th (9), Tue 10 th (8), Sun 15 th (11), Wed 18 th (12), Thu 26 th (10), Mon 30 th (10)	Sun 8 th (14), Sun 22 nd (14)	Thu 5 th (11), Sun 8 th (12), Mon 16 th (16), Fri 20 th (9), Sun 29 th (8), Tue 31 st (12)	Sat 14 th (8), Sun 22 nd (12)
April	Thu 2 nd (4)	Wed 1 st (13), Tue 14 th (15), Fri 17 th (35), Wed 29 th (42)	Sun 5 th (11), Thu 9 th (12), Thu 16 th (4), Tue 21 st (8), Wed 29 th (9)	Sun 5 th (14)	Mon 6 th (11), Sun 12 th (7)	
May		Fri 22 nd (104)	Fri 8 th (11), Tue 19 th (8), Wed 27 th (9)			
June	Wed 10 th (10), Sat 20 th (3), Tue 23 rd (4), Sat 27 th (9)	Wed 10 th (10), Sat 20 th (14), Tue 23 rd (15)	Fri 5 th (3), Mon 8 th (10), Thu 18 th (12), Tue 30 th (8)			
July	Mon 6 th (10), Thu 16 th (4), Mon 20 th (14)	Sat 4 th (10), Wed 8 th (17), Tue 14 th (35)	Wed 8 th (9), Fri 17 th (8), Sat 25 th (7)			
August	Sat 15 th (4), Wed 19 th (4), Sun 23 rd (12), Tue 25 th (9)	Tue 18 th (2)	Sat 1 st (15), Sun 30 th (15)			
September	Thu 3 rd (4), Fri 4 th (3), Mon 7 th (10), Thu 17 th (3, 4), Sun 20 th (10), Mon 21 st (9), Wed 30 th (4, 9)	Fri 4 th (17), Sun 6 th (12), Fri 18 th (35), Tue 29 th (13)	Mon 14 th (11), Fri 25 th (11)			

PUBLIC REGISTER VERSION – Restriction of publication claimed in relation to part

October	Sun 4 th (4), Thu 8 th (16), Fri 9 th (3), Mon 12 th (10), Thu 22 nd (9), Sat 24 th (7), Sat 31 st (6)	Mon 12 th (10), Sun 18 th (10), Thu 22 nd (33), Fri 23 rd (6), Wed 28 th (2), Thu 29 th (13)	Tue 6 th (8), Wed 14 th (9), Thu 15 th (11), Fri 23 rd (7), Mon 26 th (9), Fri 30 th (8)	Mon 19 th (33), Sun 25 th (14)		Wed 21 st (12)
November	Fri 6 th (3, 4), Mon 9 th (11), Tue 10 th (9), Thu 19 th (4), Fri 0 th (3), Mon 23 rd (3, 4), Wed 25 th (2, 9), Thu 26 th (13), Fri 27 th (3), Mon 30 th (8)	Wed 11 th (13), Tue 24 th (13, 14)	Wed 4 th (8), Sat 7 th (10), Thu 12 th (9), Tue 17 th (10), Sat 21 st (10), Fri 27 th (12)	Sun 22 nd (13)	Sun 1 st (32), Thu 5 th (13), Wed 18 th (10), Sat 28 th (7), Sun 29 th (3)	Mon 2 nd (12), Thu 26 th (8)
December	Fri 4 th (3), Mon 7 th (9), Tue 8 th (2), Wed 9 th (4), Sun 13 th (4), Wed 16 th (12), Thu 17 th (10), Sun 27 th (12), Mon 28 th (12),	Mon 7 th (14), Tue 8 th (13), Mon 21 st (13)	Tue 1 st (11), Wed 9 th (10), Sat 12 th (8), Sat 19 th (8), Sun 20 th (10), Sun 27 th (8), Wed 20 th (10)	Sat 5 th (12), Thu 17 th (16)	Wed 2 nd (14), Thu 3 rd (8), Sat 5 th (13), Fri 11 th (4), Tue 15 th (11), Wed 16 th (8), Fri 18 th (11), Thu 24 th (13), Sat 26 th (12), Tue 29 th (10)	Fri 4 th (12), Mon 28 th (8)

7.2 Schedule 2: 2016 Sydney deployments

	Carnival Corporation Lines				Royal Caribbean Corporation Lines	
	P&O (Aus)	Princess	Carnival Cruise	Holland America	RCI	Celebrity
	For all cruises: departure dates (number of nights cruising)					
January	Fri 8 th (3), Sat 9 th (8), Mon 11 th (8), Sun 17 th (4), Tue 19 th (5), Thu 21 st (4), Sun 24 th (3), Mon 25 th (3), Wed 27 th (4), Thu 28 th (4), Sun 31 st (4)	Sun 3 rd (8, 13), Mon 11 th (12), Sat 16 th (13), Sat 23 rd (12), Fri 29 th (12)	Mon 4 th (10), Sat 9 th (9), Thu 14 th (10), Mon 18 th (9), Sun 24 th (5), Wed 27 th (10), Fri 29 th (5)	Sat 2 nd (13), Fri 15 th (15), Sat 30 th (14)	Wed 6 th (11), Thu 7 th (12), Fri 8 th (14), Sun 17 th (11), Tue 19 th (12), Fri 22 nd (8), Thu 28 th (14), Sat 30 th (10), Sun 31 st (8)	Tue 5 th (14)
February	Mon 1 st (7), Mon 8 th (3), Thu 11 th (3), Sun 14 th (2), Mon 15 th (11), Fri 26 th (3), Mon 29 th (4)	Thu 4 th (12), Wed 10 th (14), Tue 16 th (15), Wed 24 th (14), Sun 28 th (42)	Wed 3 rd (9), Sat 6 th (11), Fri 12 th (11), Wed 17 th (9), Tue 23 rd (8), Fri 26 th (10)	Sat 27 th (14)	Mon 8 th (10), Tue 9 th (10), Thu 11 th (3), Sun 14 th (10), Thu 18 th (7), Fri 19 th (8), Wed 24 th (11), Thu 25 th (32), Sat 27 th (7)	Tue 2 nd (12)
March	Fri 4 th (4), Tue 8 th (9), Thu 17 th (7), Thu 24 th (4), Mon 28 th (4)	Wed 9 th (29), Wed 16 th (7), Wed 23 rd (19)	Wed 2 nd (12), Mon 7 th (8), Mon 14 th (10), Tue 15 th (11), Thu 24 th (3), Sat 26 th (10), Sun 27 th (11)	Sat 12 th (13), Fri 25 th (14)	Sat 5 th (8), Sun 6 th (11), Sun 13 th (12), Thu 17 th (4), Mon 21 st (9), Fri 25 th (10), Mon 28 th (6), Wed 30 th (13)	Sun 20 th (12)
April	Fri 1 st (3), Mon 4 th (4), Fri 8 th (10), Thu 14 th (9), Mon 18 th (4), Fri 22 nd (4), Sat 23 rd (3), Tue 26 th (9, 10)	Wed 6 th (21), Thu 7 th (13), Sun 10 th (35), Wed 20 th (15)	Tue 5 th (5), Thu 7 th (8), Sun 10 th (8), Fri 15 th (10), Mon 25 th (8)		Mon 4 th (12), Tue 12 th (11), Sat 16 th (14),	Fri 1 st (8)
May	Thu 5 th (4), Fri 6 th (3), Mon 9 th (7, 10), Mon 16 th (11), Thu 19 th (4), Mon 23 rd (11), Fri 27 th (14)	Thu 5 th (14), Sun 15 th (104), Wed 18 th (14), Thu 19 th (15)	Tue 3 rd (4), Sat 7 th (4), Wed 11 th (12), Mon 23 rd (10)			

PUBLIC REGISTER VERSION – Restriction of publication claimed in relation to part

June	Fri 10 th (3, 4), Mon 13 th (4), Tue 14 th (11), Fri 17 th (2), Sat 25 th (7), Mon 27 th (10)	Wed 1 st (10), Fri 3 rd (17), Sat 11 th (10), Tue 21 st (75)	Thu 2 nd (11), Mon 13 th (10), Thu 23 rd (8)				
July	Sat 2 nd (10), Thu 7 th (4), Mon 11 th (11), Tue 12 th (9), Thu 21 st (10), Fri 22 nd (3), Mon 25 th (12), Sun 31 st (12)		Fri 1 st (8), Sat 9 th (11), Wed 20 th (10), Sat 30 th (12)				
August	Sat 6 th (3), Tue 9 th (10), Fri 12 th (14), Fri 19 th (3), Mon 22 nd (11), Fri 26 th (11)	Sun 28 th (17)	Thu 11 th (3), Sun 14 th (4), Thu 18 th (12), Tue 30 th (10)				
September	Fri 2 nd (4), Tue 6 th (10), Fri 16 th (3, 4), Mon 19 th (10), Tue 20 th (10), Thu 29 th (4), Fri 30 th (8)	Sun 4 th (10), Sat 10 th (17), Wed 14 th (20), Tue 27 th (35)	Fri 9 th (4), Tue 13 th (4), Sat 17 th (8), Sun 25 th (8)				
October	Mon 3 rd (10), Sat 8 th (4), Wed 12 th (10), Thu 13 th (16), Sat 22 nd (7), Sat 29 th (6)	Tue 4 th (13), Mon 17 th (30)	Mon 3 rd (9), Tue 11 th (8), Wed 12 th (8), Wed 19 th (9), Thu 20 th (7), Thu 27 th (3), Fri 28 th (10), Sun 30 th (6)	Thu 20 th (29), Tue 25 th (14)	Mon 17 th (14), Mon 31 st (16)		
November	Fri 4 th (3, 9), Mon 7 th (4), Fri 11 th (3), Sun 13 th (4), Mon 14 th (10), Tue 15 th (15), Thu 17 th (4), Mon 21 st (8), Thu 24 th (4), Mon 28 th (4), Tue 29 th (4), Wed 30 th (10)	Tue 1 st (5), Sun 6 th (14), Fri 11 th (3), Tue 15 th (13), Wed 16 th (17), Sun 20 th (6), Sat 26 th (13), Mon 28 th (14)	Sat 5 th (8), Mon 7 th (10), Sun 13 th (9), Thu 17 th (9), Tue 22 nd (10), Sat 26 th (10)	Fri 18 th (14), Tue 22 nd (15)	Tue 1 st (7), Wed 2 nd (8), Tue 8 th (11), Thu 10 th (10), Sat 19 th (11), Sun 20 th (9), Tue 29 th (9), Wed 30 th (13)	Mon 14 th (13), Sun 27 th (12)	
December	Fri 2 nd (3), Mon 5 th (8), Sat 10 th (4), Tue 13 th (4), Wed 14 th (4), Sat 17 th (10), Sun 18 th (10), Tue 27 th (3), Wed 28 th (12), Fri 30 th (9)	Fri 9 th (13), Mon 12 th (7), Mon 19 th (14), Thu 22 nd (12)	Fri 2 nd (8), Tue 6 th (11), Sat 10 th (8), Sat 17 th (10), Sun 18 th (11), Tue 27 th (11), Thu 29 th (10)	Wed 7 th (14), Fri 16 th (17), Wed 21 st (14)	Sat 3 rd (13), Thu 8 th (3), Sun 11 th (11), Tue 13 th (7), Thu 15 th (15), Fri 16 th (10), Tue 20 th (8), Thu 22 nd (12), Mon 26 th (11), Wed 28 th (8), Fri 30 th (10)	Fri 23 rd (12)	

7.3 Schedule 3: 2017 Sydney deployments

	Carnival Corporation Lines				Royal Caribbean Corporation Lines		Norwegian Cruise Line
	P&O (Aus)	Princess	Carnival Cruise	Holland America	RCI	Celebrity	
For all cruises: departure dates (number of nights cruising)							
January	Sun 8 th (3), Mon 9 th (4), Wed 11 th (8), Fri 13 th (4), Tue 17 th (8), Thu 19 th (5), Tue 24 th (3), Wed 25 th (3), Fri 27 th (3), Sat 28 th (5), Mon 30 th (4)	Mon 2 nd (8), Tue 3 rd (13), Tue 10 th (11), Wed 11 th (84), Mon 16 th (13), Sat 21 st (11), Sun 29 th (7)	Sat 7 th (10), Sun 8 th (8), Mon 16 th (8), Tue 17 th (10), Tue 24 th (5), Fri 27 th (3), Sun 29 th (9), Mon 30 th (4)	Wed 4 th (14), Sun 15 th (14), Wed 18 th (13), Tue 31 st (14)	Tue 3 rd (10), Thu 5 th (14), Fri 6 th (14), Mon 9 th (14), Fri 13 th (12), Thu 19 th (12), Fri 20 th (8), Mon 23 rd (5), Wed 25 th (10), Sat 28 th (12), Tue 31 st (12)	Wed 4 th (8), Thu 12 th (12)	
February	Thu 2 nd (8), Wed 8 th (8), Fri 10 th (3), Mon 13 th (2), Thu 16 th (4), Mon 20 th (7), Mon 27 th (14)	Wed 1 st (12), Sun 5 th (13), Mon 13 th (11), Sat 18 th (13), Fri 24 th (11)	Fri 3 rd (8), Tue 7 th (8), Sat 11 th (12), Wed 15 th (9), Thu 23 rd (5), Fri 24 th (3), Mon 27 th (10), Tue 28 th (8)	Tue 28 th (14)	Sat 4 th (10), Thu 9 th (8, 16), Sun 12 th (9), Tue 14 th (8), Fri 17 th (3), Mon 20 th (14), Tue 21 st (12), Wed 22 nd (10)	Sun 5 th (12)	Mon 6 th (12)
March	Mon 13 th (4), Fri 17 th (3), Mon 20 th (11), Fri 31 st (3),	Fri 3 rd (13), Tue 7 th (29), Thu 16 th (42), Sat 18 th (13), Fri 31 st (12)	Wed 8 th (12), Thu 9 th (3), Sun 12 th (9), Mon 20 th (7), Tue 21 st (8), Mon 27 th (5), Wed 29 th (9)	Tue 14 th (12)	Sat 4 th (12), Sun 5 th (10), Tue 14 th (14), Wed 15 th (11), Thu 16 th (3), Sun 19 th (11), Sun 26 th (11), Tue 28 th (13), Thu 30 th (10)	Wed 1 st (12), Mon 13 th (12), Sat 25 th (9)	
April	Mon 3 rd (4), Fri 7 th (3), Mon 10 th (10), Thu 20 th (4), Mon 24 th (10)	Wed 5 th (10, 20), Sat 15 th (35), Fri 21 st (13), Tue 25 th (12), Thu 27 th (17)	Fri 7 th (7), Fri 14 th (3), Mon 17 th (8), Tue 25 th (10)		Thu 6 th (13), Sun 9 th (13), Mon 10 th (8), Wed 19 th (14)	Mon 3 rd (10), Thu 13 th (7)	
May	Thu 4 th (4), Mon 8 th (10), Thu 18 th (4), Mon 22 nd (4), Fri 26 th (7)	Thu 4 th (15), Sun 7 th (14), Fri 19 th (75), Sat 20 th (104), Sun 21 st (15)	Fri 5 th (4), Tue 9 th (8), Wed 17 th (8), Thu 25 th (10)				
June	Fri 2 nd (3), Mon 5 th (8), Tue 13 th (6), Mon 19 th (10), Thu 22 nd (10), Thu 29 th (4)	Mon 5 th (12), Sat 17 th (12), Thu 29 th (17)	Sun 4 th (9), Tue 13 th (10), Fri 23 rd (8)				
July	Sun 2 nd (8), Mon 3 rd (9), Mon 10 th (10), Wed 12 th (10), Thu 20 th (8), Sat 22 nd (12), Fri 28 th (3), Mon 31 st (4)		Sat 1 st (9), Mon 10 th (7), Mon 17 th (10), Thu 27 th (10)				

PUBLIC REGISTER VERSION – Restriction of publication claimed in relation to part

August	Thu 3 rd (14), Fri 4 th (3), Mon 7 th (12), Thu 17 th (8), Sat 19 th (7), Fri 25 th (3), Sat 26 th (4), Mon 28 th (4), Wed 30 th (10)	Wed 2 nd (35)	Sun 6 th (11), Thu 17 th (4), Mon 21 st (12)				
September	Sat 9 th (8), Sun 17 th (4), Thu 21 st (3), Sun 24 th (10)	Sat 2 nd (17), Wed 6 th (15), Thu 21 st (11)	Sat 2 nd (10), Tue 12 th (10), Fri 22 nd (3), Mon 25 th (10)				
October	Wed 4 th (8), Thu 12 th (16), Sat 28 th (3), Tue 31 st (4)	Mon 2 nd (13), Sun 8 th (28), Sun 15 th (10), Wed 25 th (7)	Thu 5 th (4), Mon 9 th (8), Tue 10 th (8), Tue 17 th (11), Wed 18 th (8), Thu 26 th (8), Sat 28 th (8)	Sat 21 st (32), Sun 22 nd (15)	Sun 8 th (10), Wed 18 th (10), Sat 28 th (10), Sun 29 th (11)	Fri 20 th (2), Sun 22 nd (8), Mon 30 th (12)	
November	Sat 4 th (6), Fri 10 th (3, 4), Mon 13 th (3, 4), Tue 14 th (2), Thu 16 th (8), Fri 17 th (3), Mon 20 th (10), Fri 24 th (3), Mon 27 th (4), Thu 30 th (4)	Wed 1 st (14), Sun 5 th (6), Sat 11 th (15), Wed 15 th (13), Sun 26 th (13), Tue 28 th (3)	Fri 3 rd (3), Sun 5 th (6), Mon 6 th (8), Sat 11 th (12), Tue 14 th (8), Wed 22 nd (5), Thu 23 rd (9), Mon 27 th (9)	Tue 21 st (15), Wed 22 nd (31)	Tue 7 th (11), Thu 9 th (10), Mon 13 th (8), Sat 18 th (11), Sun 19 th (7), Tue 21 st (10), Sun 26 th (9), Wed 29 th (14)	Sat 25 th (14)	Sun 12 th (5), Fri 17 th (13), Thu 30 th (14)
December	Fri 1 st (6), Mon 4 th (10), Thu 7 th (4), Mon 11 th (4), Thu 14 th (3), Fri 15 th (3), Sun 17 th (10), Mon 18 th (10), Wed 27 th (3), Thu 28 th (12), Sat 30 th (9)	Sat 9 th (13), Mon 11 th (8), Tue 19 th (11), Fri 22 nd (13)	Sat 2 nd (8), Wed 6 th (10), Sun 10 th (8), Sat 16 th (11), Mon 18 th (10), Wed 27 th (10), Thu 28 th (11)	Thu 21 st (15), Sat 23 rd (13)	Fri 1 st (2), Sun 3 rd (9), Tue 5 th (10), Thu 7 th (10), Tue 12 th (8), Wed 13 th (9), Fri 15 th (9), Sun 17 th (12), Wed 20 th (10), Fri 22 nd (12), Sun 24 th (11), Fri 29 th (12), Sat 30 th (14)	Thu 21 st (12)	Thu 14 th (9), Sat 23 rd (13)

7.4 Schedule 4: 2018 Sydney deployments

	Carnival Corporation Lines				Royal Caribbean Corporation Lines		Norwegian Cruise Line
	P&O (Aus)	Princess	Carnival Cruise	Holland America	RCI	Celebrity	
For all cruises: departure dates (number of nights cruising)							
January	Mon 8 th (8), Tue 9 th (4), Sat 13 th (4), Tue 16 th (3), Wed 17 th (5), Fri 19 th (5), Mon 22 nd (3), Wed 24 th (3), Thu 25 th (3), Sat 27 th (6), Sun 28 th (9)	Thu 4 th (13), Thu 11 th (14), Wed 17 th (13), Thu 25 th (12), Tue 30 th (14)	Sat 6 th (9), Mon 8 th (8), Mon 15 th (9), Tue 16 th (12), Wed 24 th (8), Sun 28 th (10)	Fri 5 th (13, 15), Sat 20 th (12)	Wed 3 rd (14), Thu 4 th (8), Wed 10 th (9), Fri 12 th (8), Sat 13 th (10), Wed 17 th (14), Fri 19 th (8), Sat 20 th (10), Tue 23 rd (10), Sat 27 th (8), Tue 30 th (10), Wed 31 st (13)	Tue 2 nd (12), Sun 14 th (8), Mon 22 nd (12)	Fri 5 th (16), Sun 21 st (10)
February	Fri 2 nd (3), Mon 5 th (4), Tue 6 th (3), Fri 9 th (3), Mon 12 th (10), Thu 22 nd (4), Mon 26 th (4)	Tue 6 th (12), Tue 13 th (6), Mon 19 th (13)	Thu 1 st (5), Wed 7 th (10), Sat 17 th (12)	Thu 1 st (14)	Fri 2 nd (3), Sun 4 th (14), Mon 5 th (10), Fri 9 th (3), Mon 12 th (9), Tue 13 th (16), Thu 15 th (10), Sun 18 th (8), Wed 21 st (12), Sun 25 th (14), Mon 26 th (10)	Sat 3 rd (14)	Sat 10 th (10)
March	Fri 2 nd (3), Mon 5 th (10), Thu 15 th (3), Sat 17 th (4), Sun 18 th (4), Thu 22 nd (4), Mon 26 th (5), Sat 31 st (3)	Fri 2 nd (8), Sun 4 th (13), Sat 10 th (12), Wed 14 th (10), Sat 17 th (13), Thu 22 nd (23), Sat 24 th (28), Fri 30 th (13)	Thu 1 st (5), Tue 6 th (11), Sat 17 th (8), Sat 24 th (10), Sun 25 th (10)	Thu 1 st (14), Thu 15 th (13), Wed 28 th (16)	Thu 1 st (17), Mon 5 th (7), Thu 8 th (5), Sun 11 th (9), Mon 12 th (7), Tue 13 th (10), Sun 18 th (11), Mon 19 th (9), Tue 20 th (7), Fri 23 rd (3), Mon 26 th (14), Tue 27 th (9), Wed 28 th (11), Thu 29 th (8)	Wed 21 st (9), Fri 30 th (12)	
April	Tue 3 rd (9), Thu 12 th (4), Fri 13 th (3), Mon 16 th (8, 10), Tue 24 th (10), Thu 26 th (4), Mon 30 th (10)	Thu 12 th (14), Sat 21 st (10), Thu 26 th (17)	Tue 3 rd (18), Wed 4 th (9), Fri 13 th (8), Sat 21 st (8), Sun 29 th (4)		Thu 5 th (11), Fri 6 th (11), Sun 8 th (7), Sun 15 th (7), Mon 16 th (14)		
May	Fri 4 th (3), Mon 7 th (8), Thu 10 th (4), Mon 14 th (10), Tue 15 th (4), Sat 19 th (3), Tue 22 nd (10), Thu 24 th (8)	Tue 1 st (35)	Thu 3 rd (19)				
June	Fri 1 st (3, 7), Mon 4 th (10), Fri 8 th (3), Mon 11 th (9), Thu 14 th (3), Sun 17 th (6), Wed 20 th (4), Sat 23 rd (3), Sun 24 th (12), Tue 26 th (8)	Tue 5 th (106)	Mon 25 th (10)				
July	Wed 4 th (9), Fri 6 th (3), Mon 9 th (10), Fri 13 th (3), Mon		Thu 5 th (3), Sun 8 th (8), Mon 16 th (8),				

PUBLIC REGISTER VERSION – Restriction of publication claimed in relation to part

	16 th (7), Thu 19 th (4), Mon 23 rd (4, 10)		Tue 24 th (9)				
August	Thu 2 nd (7), Thu 9 th (4), Mon 13 th (8), Tue 21 st (10), Fri 31 st (8)		Thu 2 nd (4), Mon 6 th (10), Thu 16 th (4), Mon 20 th (10), Thu 30 th (8)				
September	Sat 8 th (3), Mon 10 th (4), Tue 11 th (10), Fri 14 th (4), Tue 18 th (10), Fri 21 st (3), Mon 24 th (10), Fri 28 th (4)	Sat 15 th (12), Thu 20 th (10), Thu 27 th (13), Sun 30 th (28)	Fri 7 th (3), Mon 10 th (11), Fri 21 st (8), Sat 29 th (8)				
October	Tue 2 nd (8), Thu 4 th (4), Mon 8 th (10), Wed 10 th (9), Thu 18 th (16), Fri 19 th (3), Mon 22 nd (4), Fri 26 th (8)	Wed 10 th (13), Mon 22 nd (3), Sun 28 th (13)	Sun 7 th (7), Sat 13 th (11), Sun 14 th (4), Thu 18 th (8), Wed 24 th (8), Fri 26 th (9)	Sun 21 st (32), Tue 23 rd (33), Fri 26 th (15)	Sat 6 th (3), Tue 9 th (7), Tue 16 th (5), Sun 21 st (7), Sat 27 th (11), Sun 28 th (9)	Sat 20 th (9), Mon 29 th (10)	
November	Sat 3 rd (6), Fri 9 th (3, 4), Mon 12 th (4), Tue 13 th (10), Fri 16 th (3), Mon 19 th (5), Fri 23 rd (3), Sat 24 th (13), Mon 26 th (9)	Mon 5 th (13), Sat 10 th (12), Sun 18 th (6), Tue 20 th (13), Thu 22 nd (3), Sat 24 th (12)	Thu 1 st (12), Sun 4 th (6), Sat 10 th (9), Mon 19 th (10), Thu 29 th (8), Fri 30 th (9)	Thu 22 nd (31), Mon 26 th (15)	Fri 2 nd (12), Tue 6 th (15), Wed 7 th (9), Wed 14 th (9), Fri 16 th (11), Wed 21 st (10), Fri 23 rd (5), Tue 27 th (11), Wed 28 th (14)	Thu 8 th (12)	
December	Wed 5 th (4), Fri 7 th (3), Sun 9 th (5), Mon 10 th (4), Fri 14 th (3, 4), Mon 17 th (10), Tue 18 th (10), Thu 27 th (3), Fri 28 th (12), Sun 30 th (9)	Mon 3 rd (13), Thu 6 th (12), Sun 16 th (7), Sun 23 rd (13), Sun 30 th (13)	Fri 7 th (3), Sun 9 th (8), Mon 10 th (9), Wed 19 th (9), Thu 27 th (12), Fri 28 th (10)	Sun 23 rd (13), Wed 26 th (15)	Sat 8 th (10), Tue 11 th (10), Wed 12 th (10), Tue 18 th (11), Fri 21 st (12), Sat 22 nd (12), Sat 29 th (8)	Sun 2 nd (11), Sun 23 rd (12)	Sat 1 st (12), Thu 13 th (7), Thu 20 th (16)

7.5 Schedule 5: 2015 Brisbane deployments

	Carnival Corporation Lines		Royal Caribbean Corporation Line
	P&O (Aus)	Princess	RCI
	For all cruises: departure dates (number of nights cruising)		
January	Sat 10 th (7), Sat 17 th (7), Sat 24 th (4), Wed 28 th (3), Sat 31 st (7)	Tue 13 th (14), Tue 27 th (14)	
February	Sat 7 th (7), Sat 14 th (14), Sat 28 th (7)	Tue 10 th (11), Sat 21 st (11)	
March	Sat 7 th (3), Tue 10 th (4), Sat 14 th (7), Sat 21 st (7), Sat 28 th (7)	Wed 4 th (14), Wed 18 th (14)	
April	Sat 4 th (7), Sat 11 th (7), Sat 18 th (12), Thu 30 th (9)	Wed 1 st (14), Wed 15 th (2)	
May	Sat 9 th (7), Sat 16 th (7), Sat 23 rd (7), Sat 30 th (3)		
June	Tue 2 nd (4), Sat 6 th (7), Sat 13 th (3), Tue 16 th (11), Sun 21 st (7), Sat 27 th (7), Sun 28 th (7)		
July	Sat 4 th (7), Sun 5 th (7), Sat 11 th (7), Sun 12 th (7), Sat 18 th (7), Sun 19 th (7), Sat 25 th (7), Sun 26 th (7)		
August	Sat 1 st (7), Sun 2 nd (7), Sat 8 th (3), Sun 9 th (7), Tue 11 th (11), Sun 16 th (7), Sat 22 nd (7), Sun 23 rd (2), Sat 29 th (7)	Thu 20 th (10), Sun 30 th (7)	
September	Sat 5 th (3), Tue 8 th (4), Sat 12 th (7), Sat 19 th (7), Sat 26 th (7)	Sun 6 th (10), Wed 16 th (11), Sun 27 th (7)	
October	Sat 3 rd (4), Wed 7 th (10), Sat 17 th (7), Sat 24 th (7), Sat 31 st (7)	Sun 4 th (7), Sun 11 th (14), Sun 25 th (15)	
November	Sat 7 th (10), Tue 17 th (4), Sat 21 st (7), Fri 27 th (3), Sat 28 th (7), Mon 30 th (7)	Fri 13 th (11), Tue 24 th (10)	
December	Sat 5 th (7), Sat 12 th (7), Thu 17 th (10), Sat 19 th (9), Sun 27 th (7), Mon 28 th (9)	Fri 4 th (14), Fri 18 th (11), Tue 29 th (14)	Tue 8 th (2), Thu 10 th (10), Sun 20 th (10), Wed 30 th (11)

7.6 Schedule 6: 2016 Brisbane deployments

	Carnival Corporation Lines		Royal Caribbean Corporation Line
	P&O (Aus)	Princess	RCI
	For all cruises: departure dates (number of nights cruising)		
January	Sun 3 rd (12), Wed 6 th (3), Sat 9 th (7), Fri 15 th (9), Sat 16 th (7), Sat 23 rd (4), Sun 24 th (5), Wed 27 th (3), Fri 29 th (3), Sat 30 th (7)	Tue 12 th (10), Fri 22 nd (14)	Sun 10 th (7), Sun 17 th (8), Mon 25 th (14)
February	Mon 1 st (11), Sat 6 th (7), Fri 12 th (4), Sat 13 th (7), Tue 16 th (13), Sat 20 th (7), Sat 27 th (7), Sat 27 th (7), Mon 29 th (4)	Fri 5 th (14), Fri 19 th (7), Fri 26 th (2)	Mon 8 th (10), Thu 18 th (8), Fri 26 th (9)
March	Fri 4 th (14), Sat 5 th (3), Tue 8 th (4), Sat 12 th (7), Fri 18 th (3), Sat 19 th (7), Mon 21 st (7), Sat 26 th (7), Mon 28 th (4)		Sun 6 th (7), Sun 13 th (11), Thu 24 th (10)
April	Fri 1 st (4), Sat 2 nd (7), Tue 5 th (7), Sat 9 th (7), Tue 12 th (2), Sat 16 th (12), Thu 28 th (9)		Sun 3 rd (8), Mon 11 th (9), Wed 20 th (18)
May	Sat 7 th (7), Sat 14 th (7), Sat 21 st (3), Tue 24 th (4), Sat 28 th (7)		
June	Sat 4 th (7), Sat 11 th (3), Tue 14 th (11), Sun 19 th (7), Sat 25 th (7), Sun 26 th (7)		
July	Sat 2 nd (7), Sun 3 rd (7), Sat 9 th (7), Sun 10 th (12), Sat 16 th (7), Fri 22 nd (7), Sat 23 rd (7), Fri 29 th (10), Sat 30 th (7)		
August	Sat 6 th (7), Mon 8 th (7), Sat 13 th (3), Mon 15 th (18), Tue 16 th (11), Sat 27 th (7)		
September	Fri 2 nd (7), Sat 3 rd (7), Fri 9 th (7), Sat 10 th (3), Tue 13 th (4), Fri 16 th (7), Sat 17 th (7), Fri 23 rd (7), Sat 24 th (7), Fri 30 th (3)		
October	Sat 1 st (7), Mon 3 rd (10), Sat 8 th (4), Wed 12 th (10), Thu 13 th (4), Mon 17 th (4), Fri 21 st (7), Sat 22 nd (7), Fri 28 th (3), Sat 29 th (7), Mon 31 st (10)	Wed 26 th (14)	
November	Sat 5 th (7), Thu 10 th (4), Sat 12 th (7), Mon 14 th (14), Sat 19 th (7), Sat 26 th (3), Mon 28 th (11), Tue 29 th (4)	Wed 9 th (11), Sun 20 th (7), Sun 27 th (14)	Mon 21 st (11)
December	Sat 3 rd (7), Fri 9 th (7), Sat 10 th (7), Fri 16 th (3), Sat 17 th (3), Mon 19 th (10), Tue 20 th (7), Tue 27 th (11), Thu 29 th (7)	Sun 11 th (7), Sun 18 th (10), Wed 28 th (11)	Fri 2 nd (3), Mon 5 th (8), Tue 13 th (9), Thu 22 nd (8), Fri 30 th (7)

7.7 Schedule 7: 2017 Brisbane deployments

	Carnival Corporation Lines		Royal Caribbean Corporation Line
	P&O (Aus)	Princess	RCI
	For all cruises: departure dates (number of nights cruising)		
January	Thu 5 th (7), Sat 7 th (7), Thu 12 th (4), Sat 14 th (7), Mon 16 th (11), Sat 21 st (3), Tue 24 th (4), Fri 27 th (7), Sat 28 th (7)	Sun 8 th (3), Sun 22 nd (11)	Fri 6 th (9), Sun 15 th (14), Sun 29 th (10)
February	Fri 3 rd (7), Sat 4 th (14), Fri 10 th (14), Fri 24 th (3), Mon 27 th (4)	Thu 2 nd (14), Thu 16 th (10), Sun 26 th (7)	Wed 8 th (12), Mon 20 th (18)
March	Fri 3 rd (7), Fri 10 th (7), Thu 16 th (9), Fri 17 th (12), Sat 25 th (3), Tue 28 th (4), Wed 29 th (9)	Sun 5 th (2)	
April	Sat 1 st (7), Fri 7 th (7), Sat 8 th (3), Tue 11 th (4), Fri 14 th (7), Sat 15 th (7), Fri 21 st (7), Sat 22 nd (3), Tue 25 th (4), Fri 28 th (3), Sat 29 th (7)		
May	Mon 1 st (4), Fri 5 th (7), Sat 6 th (7), Fri 12 th (7), Sat 13 th (7), Fri 19 th (7), Sat 20 th (3), Tue 23 rd (4), Fri 26 th (14), Sat 27 th (7)		
June	Sat 3 rd (7), Fri 9 th (9), Sat 10 th (3), Tue 13 th (11), Sun 18 th (7), Sat 24 th (7), Sun 25 th (7)		
July	Sat 1 st (3), Sun 2 nd (7), Tue 4 th (4), Sat 8 th (7), Sun 9 th (12), Sat 15 th (7), Fri 21 st (7), Sat 22 nd (7), Fri 28 th (10), Sat 29 th (3)	Mon 31 st (10)	
August	Tue 1 st (4), Sat 5 th (7), Mon 7 th (7), Sat 12 th (7), Mon 14 th (18), Sat 19 th (7), Sat 26 th (3), Tue 29 th (4)	Thu 10 th (10), Sun 20 th (7), Sun 27 th (10)	
September	Fri 1 st (7), Sat 2 nd (7), Fri 8 th (7), Sat 9 th (7), Fri 15 th (7), Sat 16 th (3), Tue 19 th (4), Fri 22 nd (7), Sat 23 rd (7), Fri 29 th (3), Sat 30 th (7)	Wed 6 th (4), Sun 10 th (7), Sun 17 th (7), Sun 24 th (11)	
October	Mon 2 nd (10), Sat 7 th (3), Tue 10 th (4), Thu 12 th (4), Sat 14 th (7), Mon 16 th (11), Sat 21 st (7), Fri 27 th (7), Sat 28 th (7)	Thu 5 th (3)	
November	Fri 3 rd (7), Sat 4 th (7), Fri 10 th (4), Sat 11 th (7), Tue 14 th (10), Sat 18 th (3), Tue 21 st (4), Fri 24 th (7), Sat 25 th (7)		
December	Fri 1 st (7), Sat 2 nd (7), Fri 8 th (7), Sat 9 th (3), Tue 12 th (4), Fri 15 th (3), Sat 16 th (12), Mon 18 th (9), Wed 27 th (9), Thu 28 th (9)	Sun 3 rd (14), Sun 17 th (4), Thu 21 st (14)	

7.8 Schedule 8: 2018 Brisbane deployments

	Carnival Corporation Lines	
	P&O (Aus)	Princess
	For all cruises: departure dates (number of nights cruising)	
January	Fri 5 th (7), Sat 6 th (3), Tue 9 th (4), Fri 12 th (7), Sat 13 th (7), Fri 19 th (4), Sat 20 th (7), Tue 23 rd (6), Sat 27 th (7), Mon 29 th (4)	Thu 4 th (14), Thu 18 th (3), Sun 21 st (14)
February	Fri 2 nd (7), Sat 3 rd (7), Fri 9 th (14), Sat 10 th (3), Tue 13 th (4), Sat 17 th (7), Fri 23 rd (3), Sat 24 th (7), Mon 26 th (4)	Sun 4 th (7), Sun 11 th (14), Sun 25 th (11)
March	Fri 2 nd (7), Sat 3 rd (3), Tue 6 th (4) Fri 9 th (7), Sat 10 th (7), Fri 16 th (14), Sat 17 th (7), Sat 24 th (7), Fri 30 th (7), Sat 31 st (7)	Thu 8 th (4), Mon 12 th (2)
April	Fri 6 th (7), Sat 7 th (7), Fri 13 th (7), Sat 14 th (3), Tue 17 th (4), Fri 20 th (4), Sat 21 st (7), Tue 24 th (10), Sat 28 th (7)	
May	Fri 4 th (6), Sat 5 th (7), Thu 10 th (8), Sat 12 th (3), Tue 15 th (4), Fri 18 th (7), Sat 19 th (7), Fri 25 th (4), Sat 26 th (7), Tue 29 th (10)	
June	Sat 2 nd (7), Fri 8 th (9), Sat 9 th (3), Tue 12 th (4), Sat 16 th (7), Sun 17 th (12), Sat 23 ^d (7), Fri 29 th (7), Sat 30 th (7)	
July	Fri 6 th (7), Sat 7 th (3), Tue 10 th (4), Fri 13 th (7), Sat 14 th (7), Fri 20 th (14), Sat 21 st (7), Sat 28 th (3), Tue 31 st (4)	
August	Sat 4 th (7), Sat 11 th (7), Sat 18 th (7), Sat 25 th (7), Thu 30 th (3)	
September	Sat 1 st (7), Sun 2 nd (7), Mon 3 rd (4), Fri 7 th (6), Sat 8 th (3), Sun 9 th (7), Tue 11 th (4), Thu 13 th (8), Sat 15 th (7), Sun 16 th (7), Fri 21 st (7), Sat 22 nd (7), Sun 23 rd (7), Fri 28 th (7), Sat 29 th (3), Sun 30 th (7)	
October	Tue 2 nd (4), Fri 5 th (4), Sat 6 th (7), Sun 7 th (7), Tue 9 th (10), Sat 13 th (7), Sun 14 th (7), Fri 19 th (7), Sat 20 th (3), Sun 21 st (7), Tue 23 rd (4), Fri 26 th (7), Sat 27 th (7), Sun 29 th (10)	
November	Fri 2 nd (7), Sat 3 rd (7), Wed 7 th (4), Fri 9 th (7), Sat 10 th (3), Sun 11 th (7), Tue 13 th (4), Fri 16 th (7), Sat 17 th (7), Sun 18 th (4), Fri 23 rd (4), Sat 24 th (7), Tue 27 th (1)	Sun 25 th (14)
December	Sat 1 st (3), Tue 4 th (4), Fri 7 th (7), Sat 8 th (7), Fri 14 th (6), Sat 15 th (3), Tue 18 th (9), Thu 20 th (8), Thu 27 th (3), Fri 28 th (7), Sun 30 th (9)	Sun 9 th (7), Sun 16 th (11), Thu 27 th (14)