

GE Energy

# Communications Solutions for Network Operators

Control your network, control your future

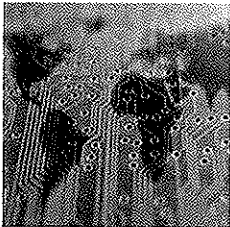
Delivering new services to customers over converged networks is defining the future for communications operators. Delivering simple voice to customers is becoming a thing of the past. The demands are now much greater as consumers wake up to a new world of new possibilities including the 'triple play' of Internet, video and voice.



imagination at work

## Proven Track Record Delivering Benefits

Our highly scalable product set supports an impressive list of over 100 high-profile customers across 37 countries worldwide. This includes large and established national telecommunications operators, cable multi-service operators, competitive service providers, long haul carriers and mobile operators.



The Smallworld Network Inventory solution succeeds in challenging environments where competitive products fail. True scalability means that the Smallworld Network Inventory system performs for large incumbent telecommunications operators with vast databases and

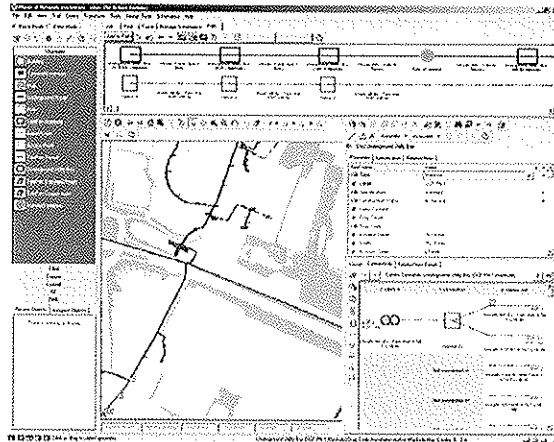
hundreds of system users. The product performs equally well for smaller operators.

Rapid return on investment can be achieved from the use of the Smallworld Network Inventory system:

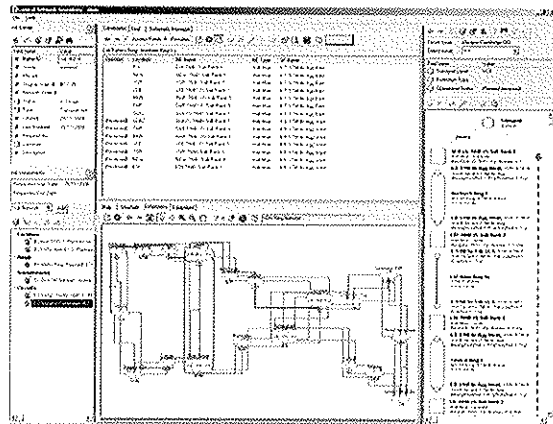
- Reduced capital expenditure on network infrastructure through targeted build and better utilization of network resources
- Reduced operational expenditure through efficient planning and engineering and increased workforce productivity
- Faster return on investment for new network build due to targeted network expansion to areas of high demand/revenue
- Faster provisioning with fewer errors and reduced risk of failure due to accurate network data
- Reduced network downtime due to rapid and accurate location of faults in response to network alarms
- Reduced repair time due to rapid location of fiber breaks and faulty equipment
- Significantly improved customer satisfaction by meeting demand for services and reducing network downtime.

## Planning and Engineering

The Smallworld Network Inventory system transforms the accuracy of your network planning, design, and engineering processes. It enables decisions to be made on the basis of complete, integrated, up-to-date information about your entire network, both physical and logical. Integration with a Field Force Automation system also provides you with a distinct advantage when it comes to installing new equipment in the field by more effectively managing your mobile workforce.



The **Physical Network Inventory\*** application provides a complete, end-to-end view of your physical network, supporting multiple communications technologies and equipment from multiple vendors. The network is modelled from the customer's premises, through the distribution network, and into the core transport network. Inside and outside plant data are combined to represent the entire system from ports on rack-mounted equipment to the external cable network (both fiber and copper). Design tools aid the rapid layout of new network while the Job Manager handles the engineering workflow. The system outputs essential reports for construction including splice connectivity reports, bills of materials and work orders.



The **Logical Network Inventory\*** application provides the ability to document, model, and manage the logical network including network elements, facilities and rings as well as the bearer circuits, customer circuits and services that run over your physical network. You can plan capacity, allocate bandwidth, and assign circuits to ensure that your network keeps pace with the demand for new services and new connections, while utilizing capacity as efficiently as possible.

**Field Force Automation** capability is provided to address mobile workforce management, advanced scheduling, route optimization, and field installation and verification activities.