

Appendix H: Regional locations with regular petrol price cycles in 2010

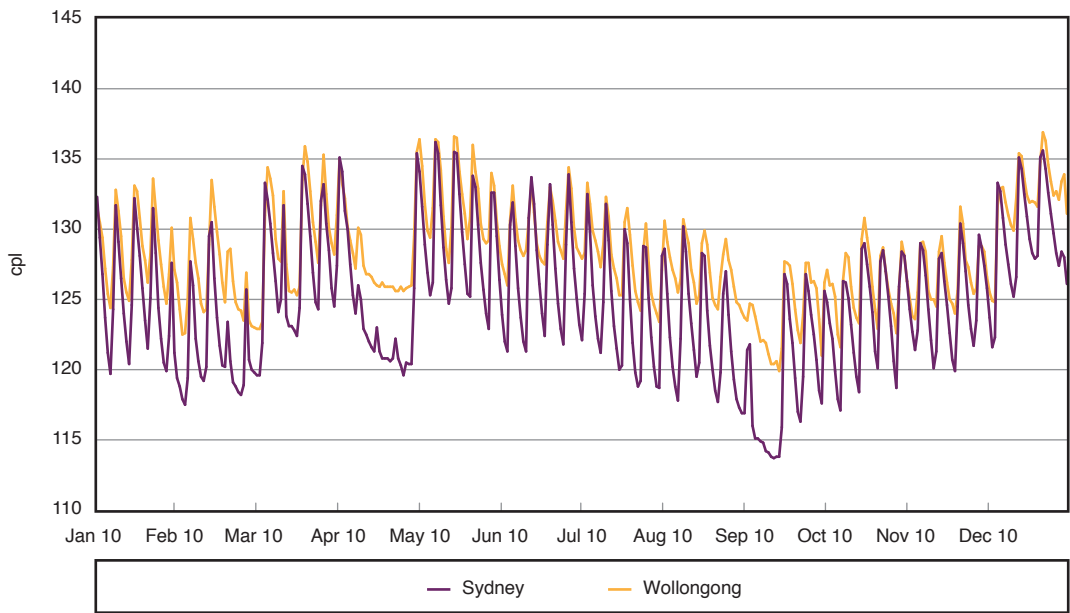
Chapter 10 noted that nine regional locations had regular petrol price cycles in 2010.³¹⁴ These were Wollongong, Newcastle, Queanbeyan, Singleton, Moss Vale and Bulahdelah in New South Wales; Geelong and Seymour in Victoria; and Gawler in South Australia.

Charts showing daily average petrol prices in Gawler and Geelong in 2010 (along with Adelaide and Melbourne prices respectively) were included in chapter 10. Charts of the remaining seven regional locations with regular price cycles in 2010 are presented in this appendix.³¹⁵

The charts generally also show prices of the relevant capital city. However, in the case of Queanbeyan, Canberra prices have been included instead of Sydney prices since Queanbeyan prices tend to more closely follow prices in Canberra than those in Sydney. Similarly, for Singleton and Bulahdelah, Newcastle prices have been included instead of Sydney prices.

Also included in this appendix are charts showing daily average retail petrol prices in Canberra, Hobart and Darwin in 2010. They indicate that Canberra had regular price cycles (as defined in chapter 10 as 20 or more price cycles) in 2010 but Hobart and Darwin did not.

Chart H.1 Wollongong and Sydney daily average petrol prices: 2010



314 In this appendix references to petrol refer to regular unleaded petrol (RULP).

315 Source for all charts: ACCC and Informed Sources.

Chart H.2 Newcastle and Sydney daily average petrol prices: 2010

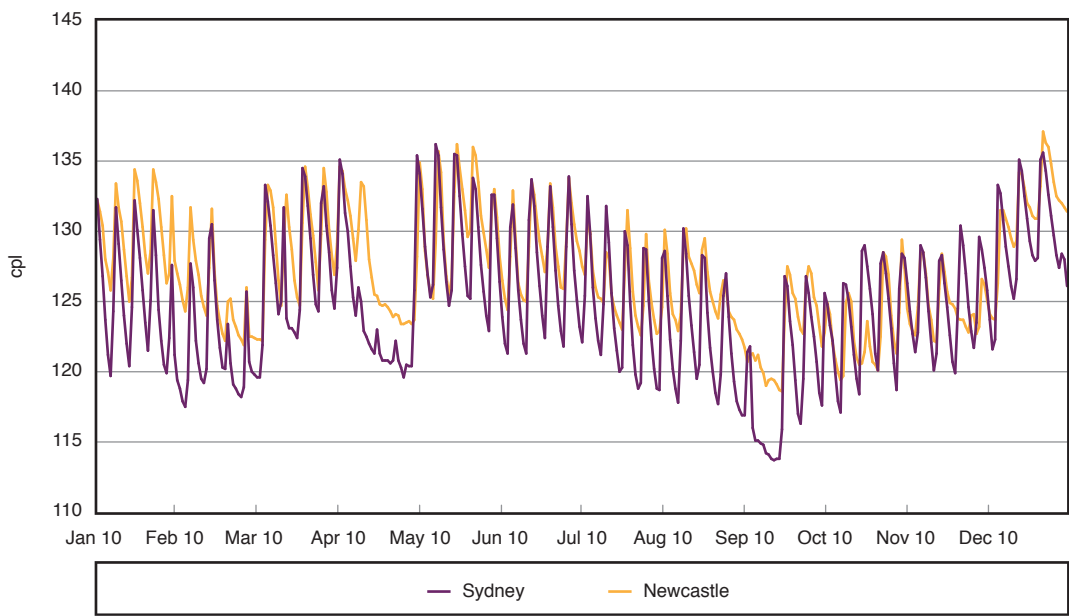


Chart H.3 Moss Vale and Sydney daily average petrol prices: 2010

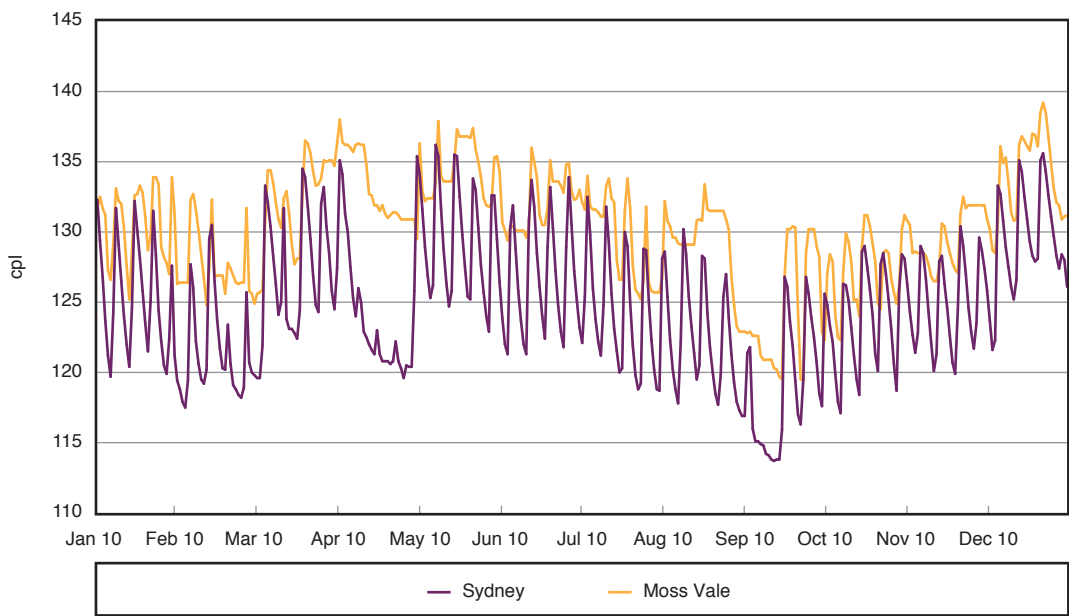


Chart H.4 Queanbeyan and Canberra daily average petrol prices: 2010

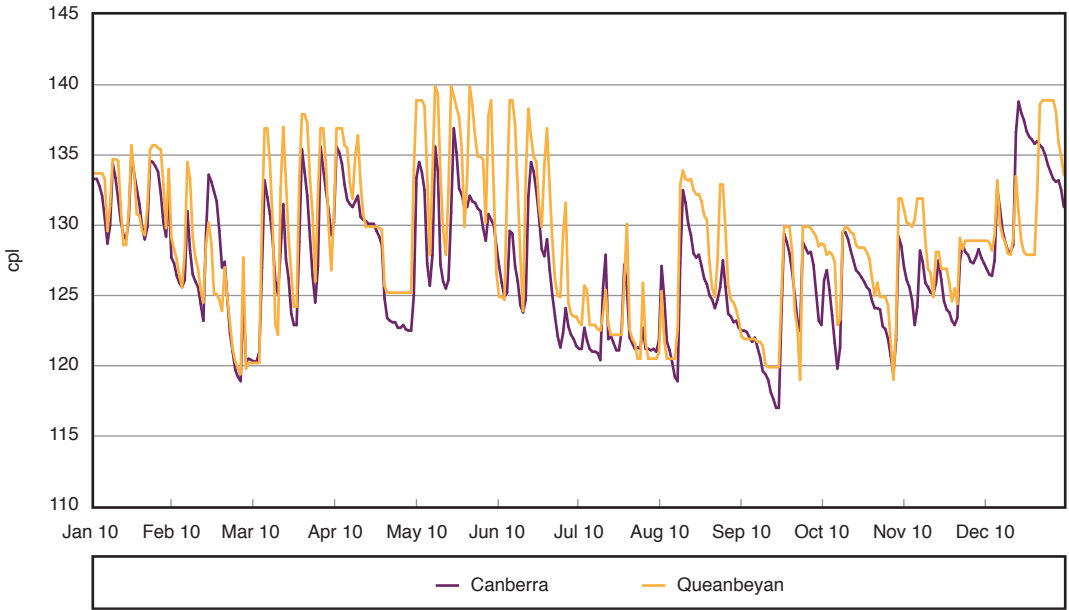


Chart H.5 Bulahdelah and Newcastle daily average petrol prices: 2010

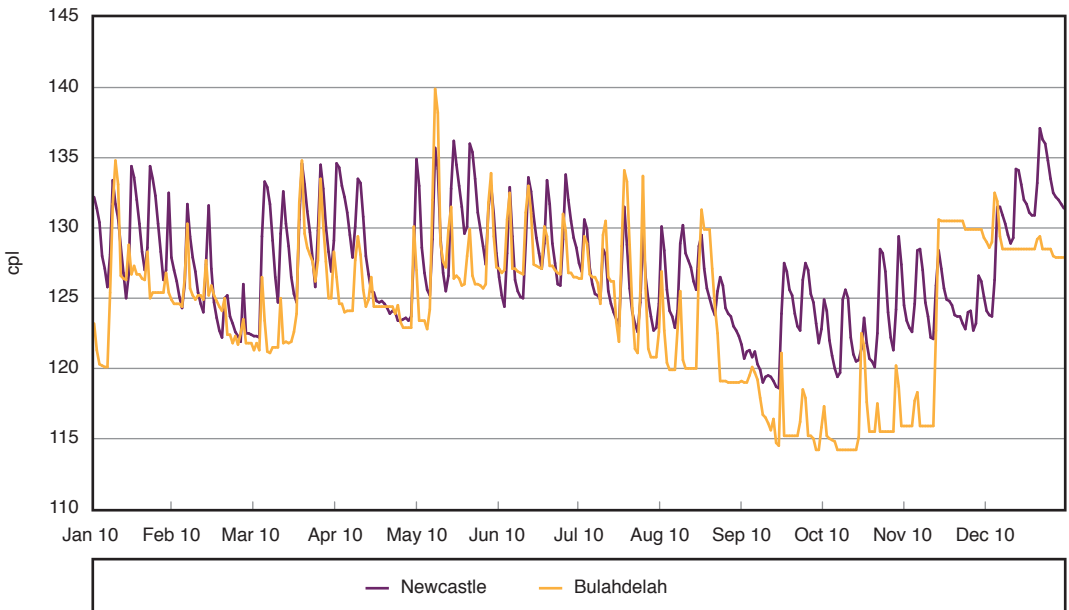


Chart H.6 Singleton and Newcastle daily average petrol prices: 2010

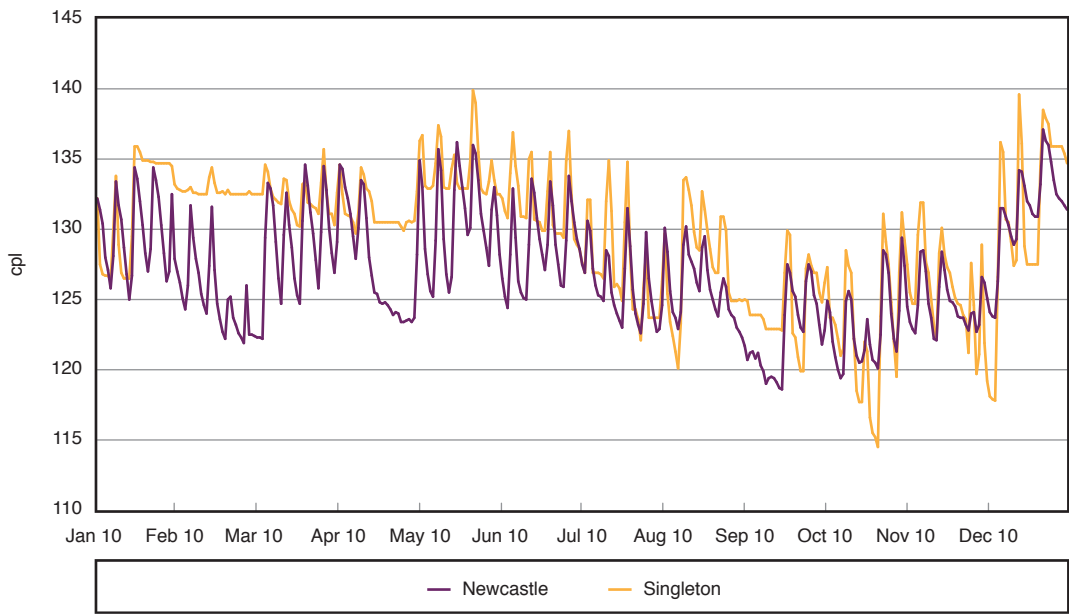


Chart H.7 Seymour and Melbourne daily average petrol prices: 2010

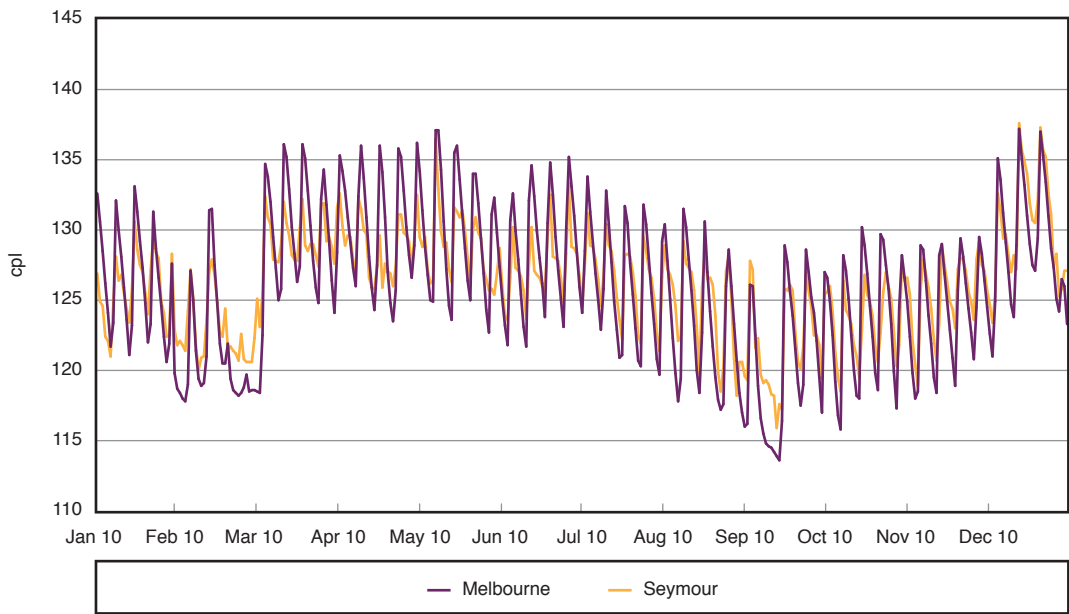


Chart H.8 Canberra daily average petrol prices: 2010

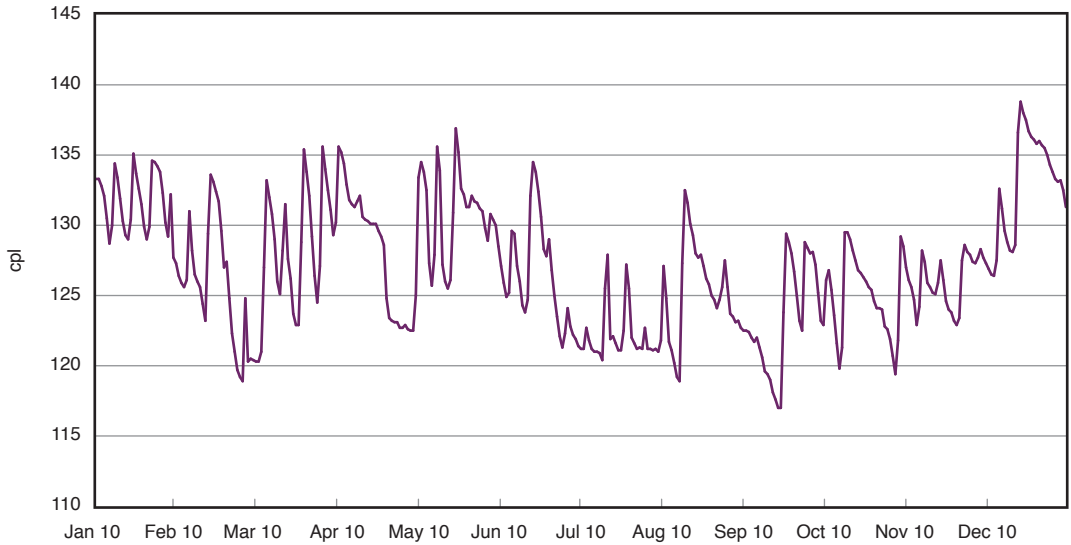


Chart H.9 Hobart daily average petrol prices: 2010

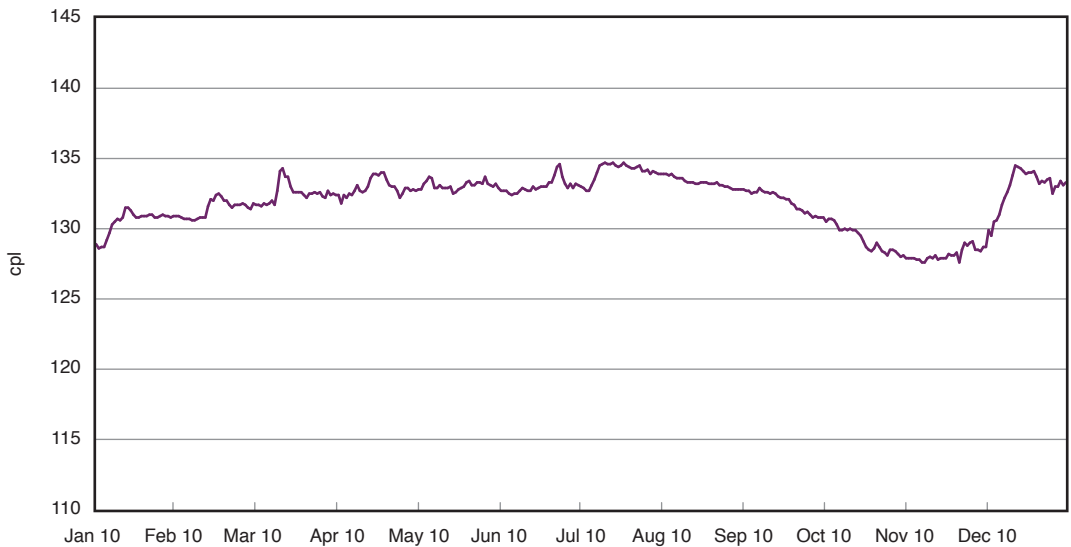


Chart H.10 Darwin daily average petrol prices: 2010

