

Appendix E: Gross indicative retail differences for regular unleaded petrol and diesel

This appendix provides data on gross indicative retail differences (subsequently referred to as ‘differences’), for petrol and diesel.³⁰⁶ These differences are calculated by subtracting average terminal gate prices (TGPs) from average retail prices.

TGPs are the prices at which petrol can be purchased from wholesalers in the spot market and are posted on a regular basis on the websites of the major wholesalers. Not all wholesale transactions are at TGPs, and therefore TGPs should be regarded as indicative wholesale prices.

Furthermore, TGPs are ‘petrol only’ prices and exclude other retail operating costs (such as branding, transportation and labour). Therefore, the differences presented in this appendix should not be confused with actual retail profits.

Petrol

Differences for petrol across the five largest cities were discussed in chapter 9. This appendix provides data on differences for each of the five largest cities individually.³⁰⁷ This data is shown annually for the period 2002–03 to 2010–11 and monthly for 2010–11. Annual average differences for each city in 2002–03 prices are also provided.³⁰⁸

306 All references to petrol in this appendix are to RULP.

307 Sources for the data in the tables and charts in this appendix are as follows: petrol—ACCC, Informed Sources, BP, Caltex, Mobil, Shell, Trafigura, Gull, FuelWatch, and Australian Bureau of Statistics; and diesel—ACCC, Informed Sources, ABS and the Australian Institute of Petroleum. Monthly data for previous years is available in past ACCC petrol monitoring reports.

308 The ABS All Groups Consumer Price Index for Sydney, Melbourne, Brisbane, Adelaide and Perth was used to deflate the respective retail differences. Source: Australian Bureau of Statistics, *6401.0 Consumer Price Index, Australia*, Tables 1 and 2. CPI: All Groups, Index Numbers and Percentage Changes, <http://www.abs.gov.au/AUSSTATS>, accessed 30 November 2011.

Sydney

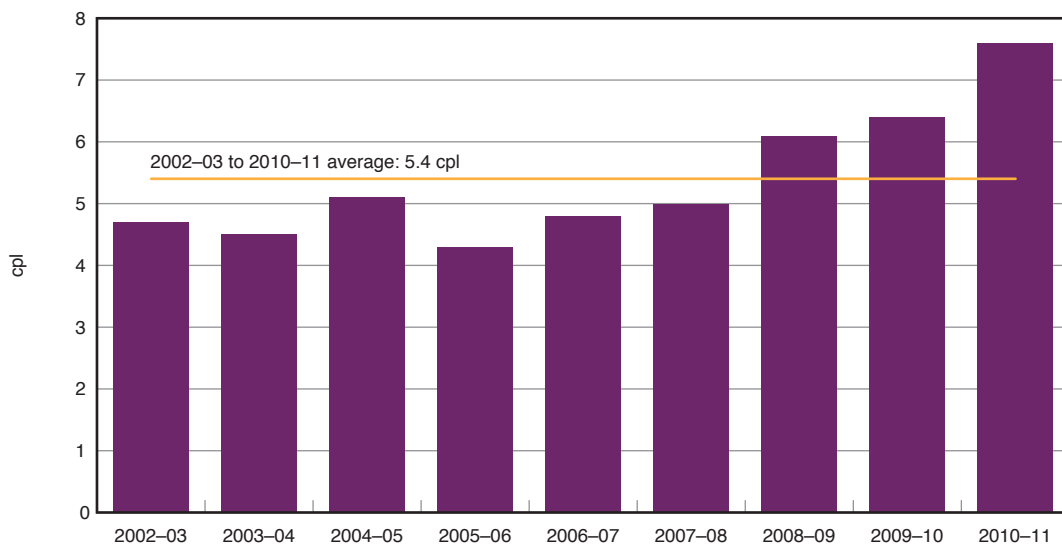
Average annual petrol retail prices, TGPs and differences in Sydney for 2002–03 to 2010–11 are presented in table E.1. The differences are also calculated in real terms relative to 2002–03 prices. The information is presented on a monthly basis for 2010–11 in table E.2. The differences for these periods are also presented in chart form (charts E.1 and E.2).

Table E.1 Average annual petrol retail prices, TGPs and differences, Sydney: 2002–03 to 2010–11

	Average retail price cpl	Average TGP cpl	Difference cpl	Difference (real) cpl
2002–03	89.7	85.0	4.7	4.7
2003–04	91.6	87.1	4.5	4.4
2004–05	103.3	98.2	5.1	4.9
2005–06	122.6	118.3	4.3	4.0
2006–07	123.3	118.5	4.8	4.3
2007–08	136.3	131.3	5.0	4.4
2008–09	128.2	122.1	6.1	5.2
2009–10	123.4	117.0	6.4	5.3
2010–11	131.7	124.1	7.6	6.1
Average differences			5.4	4.8

The average annual difference over the nine years was 5.4 cpl. It ranged from a low of 4.3 cpl in 2005–06 to a high of 7.6 cpl in 2010–11.

Chart E.1 Average annual differences, petrol, Sydney: 2002–03 to 2010–11



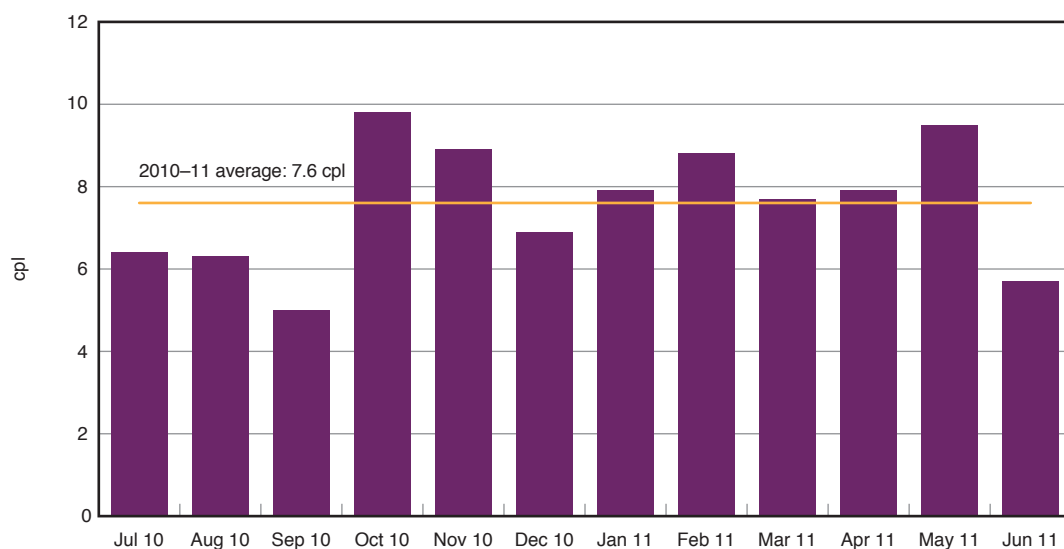
The **real** average annual difference over the nine years was 4.8 cpl. It ranged from a low of 4.0 cpl in 2005–06 to a high of 6.1 cpl in 2010–11.

Table E.2 Average monthly petrol retail prices, TGPs and differences, Sydney: July 2010 to June 2011

	Average retail price cpl	Average TGP cpl	Difference cpl
Jul 10	124.2	117.8	6.4
Aug 10	122.6	116.3	6.3
Sep 10	118.7	113.7	5.0
Oct 10	123.9	114.1	9.8
Nov 10	125.0	116.1	8.9
Dec 10	129.3	122.4	6.9
Jan 11	133.2	125.3	7.9
Feb 11	135.9	127.1	8.8
Mar 11	142.3	134.6	7.7
Apr 11	144.3	136.4	7.9
May 11	144.2	134.7	9.5
Jun 11	136.8	131.1	5.7
Average difference			7.6

The monthly difference over the year ranged from a low of 5.0 cpl in September 2010 to a high of 9.8 cpl in October 2010.

Chart E.2 Average annual differences, petrol, Sydney: July 2010 to June 2011



Melbourne

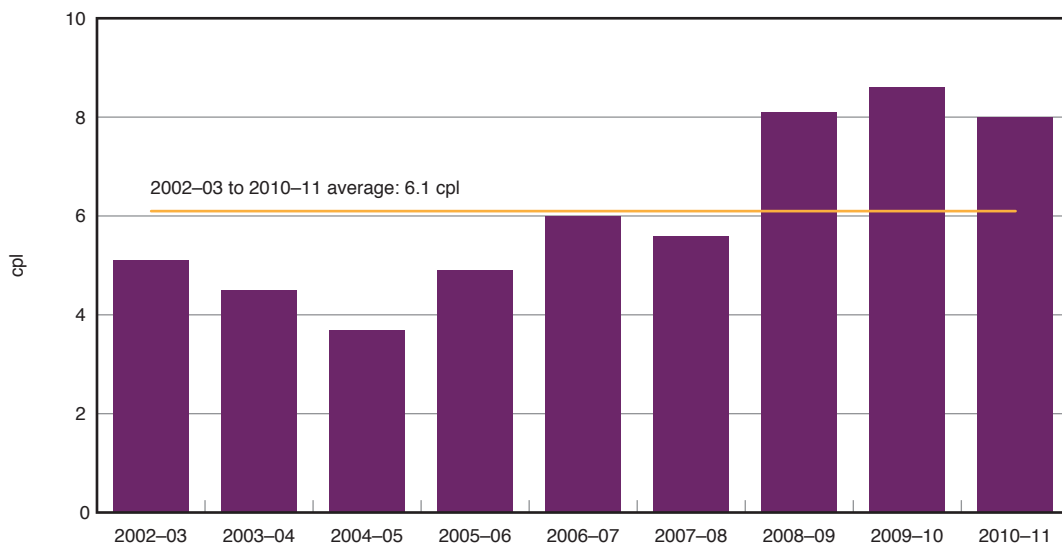
Average annual petrol retail prices, TGPs and differences in Melbourne for 2002–03 to 2010–11 are presented in table E.3. The differences are also calculated in real terms relative to 2002–03 prices. The information is presented on a monthly basis for 2010–11 in table E.4. The differences for these periods are also presented in chart form (charts E.3 and E.4).

Table E.3 Average annual petrol retail prices, TGPs and differences, Melbourne: 2002–03 to 2010–11

	Average retail price cpl	Average TGP cpl	Difference cpl	Difference (real) cpl
2002–03	89.2	84.1	5.1	5.1
2003–04	90.6	86.1	4.5	4.4
2004–05	101.0	97.3	3.7	3.5
2005–06	122.3	117.4	4.9	4.6
2006–07	123.5	117.5	6.0	5.4
2007–08	136.3	130.7	5.6	4.9
2008–09	129.9	121.8	8.1	6.9
2009–10	125.3	116.7	8.6	7.2
2010–11	131.6	123.6	8.0	6.5
Average differences			6.1	5.4

The average annual difference over the nine years was 6.1 cpl. It ranged from a low of 3.7 cpl in 2004–05 to a high of 8.6 cpl in 2009–10.

Chart E.3 Average annual differences, petrol, Melbourne: 2002–03 to 2010–11



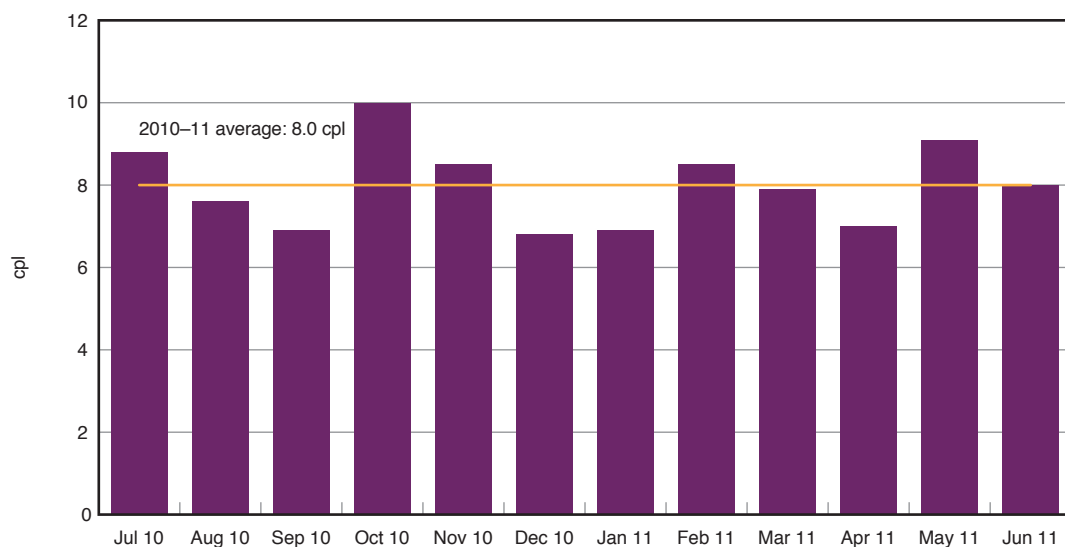
The **real** average annual difference over the nine years was 5.4 cpl. It ranged from a low of 3.5 cpl in 2004–05 to a high of 7.2 cpl in 2009–10.

Table E.4 Average monthly petrol retail prices, TGPs and differences, Melbourne: July 2010 to June 2011

	Average retail price cpl	Average TGP cpl	Difference cpl
Jul 10	126.2	117.4	8.8
Aug 10	123.5	115.9	7.6
Sep 10	120.2	113.3	6.9
Oct 10	123.7	113.7	10.0
Nov 10	124.3	115.8	8.5
Dec 10	128.8	122.0	6.8
Jan 11	131.7	124.8	6.9
Feb 11	135.0	126.5	8.5
Mar 11	142.0	134.1	7.9
Apr 11	142.7	135.7	7.0
May 11	143.2	134.1	9.1
Jun 11	138.5	130.5	8.0
Average difference			8.0

The monthly difference over the year ranged from a low of 6.8 cpl in December 2010 to a high of 10.0 cpl in October 2010.

Chart E.4 Average annual differences, petrol, Melbourne: July 2010 to June 2011



Brisbane

Average annual petrol retail prices, TGPs and differences in Brisbane for 2002–03 to 2010–11 are presented in table E.5. The differences are also calculated in real terms relative to 2002–03 prices. The information is presented on a monthly basis for 2010–11 in table E.6. The differences for these periods are also presented in chart form (charts E.5 and E.6).

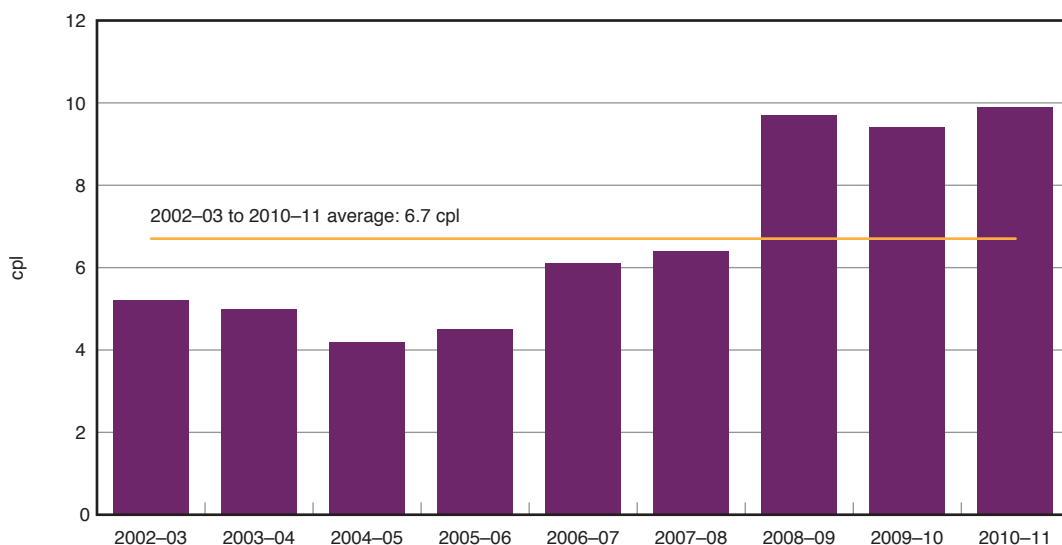
Table E.5 Average annual petrol retail prices, TGPs and differences, Brisbane: 2002–03 to 2010–11

	Average retail price cpl	Average TGP cpl	Difference cpl	Difference (real) cpl
2002–03	81.7	76.5	5.2	5.2
2003–04	83.9	78.9	5.0	4.9
2004–05	94.1	89.9	4.2	4.0
2005–06	114.5	110.0	4.5	4.1
2006–07	115.9	109.8	6.1	5.4
2007–08	128.4	122.0	6.4	5.5
2008–09	122.5	112.8	9.7	8.0
2009–10	126.3	116.9	9.4	7.5
2010–11	133.7	123.8	9.9	7.7
Average differences			6.7	5.8

Note: TGPs in Brisbane were adjusted downward before 2009–10 to reflect the Queensland Government retail fuel subsidy of around 9.2 cpl (including the GST).

The average annual difference over the nine years was 6.7 cpl. It ranged from a low of 4.2 cpl in 2004–05 to a high of 9.9 cpl in 2010–11.

Chart E.5 Average annual differences, petrol, Brisbane: 2002–03 to 2010–11



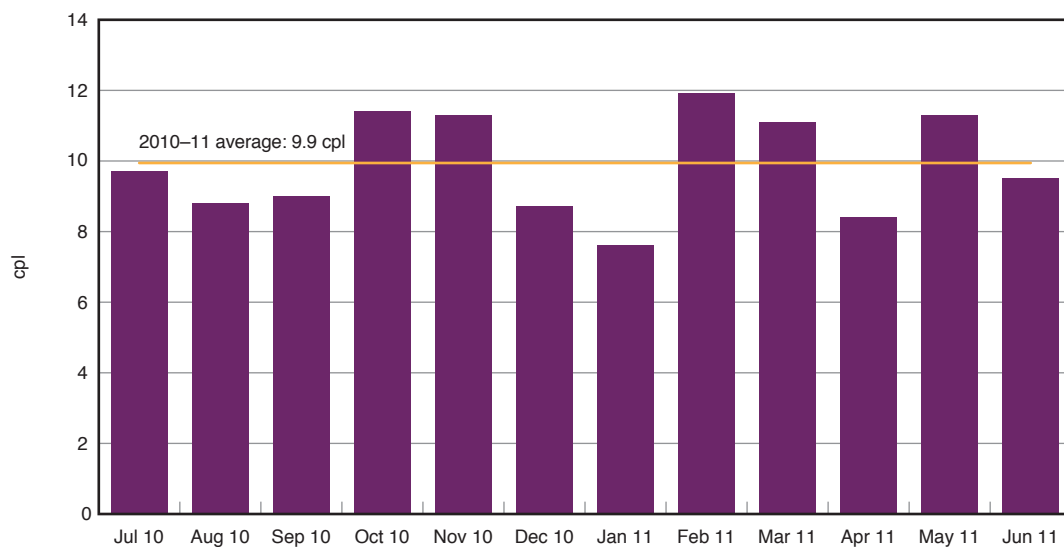
The **real** average annual difference over the nine years was 5.8 cpl. It ranged from a low of 4.0 cpl in 2004–05 to a high of 8.0 cpl in 2008–09.

Table E.6 Average monthly petrol retail prices, TGPs and differences, Brisbane: July 2010 to June 2011

	Average retail price cpl	Average TGP cpl	Difference cpl
Jul 10	127.3	117.6	9.7
Aug 10	125.0	116.2	8.8
Sep 10	122.6	113.6	9.0
Oct 10	125.4	114.0	11.4
Nov 10	127.1	115.8	11.3
Dec 10	130.7	122.0	8.7
Jan 11	132.5	124.9	7.6
Feb 11	138.4	126.5	11.9
Mar 11	145.2	134.1	11.1
Apr 11	144.4	136.0	8.4
May 11	145.7	134.4	11.3
Jun 11	140.2	130.7	9.5
Average difference			9.9

The monthly difference over the year ranged from a low of 7.6 cpl in January 2011 to a high of 11.9 cpl in February 2011.

Chart E.6 Average annual differences, petrol, Brisbane: July 2010 to June 2011



Adelaide

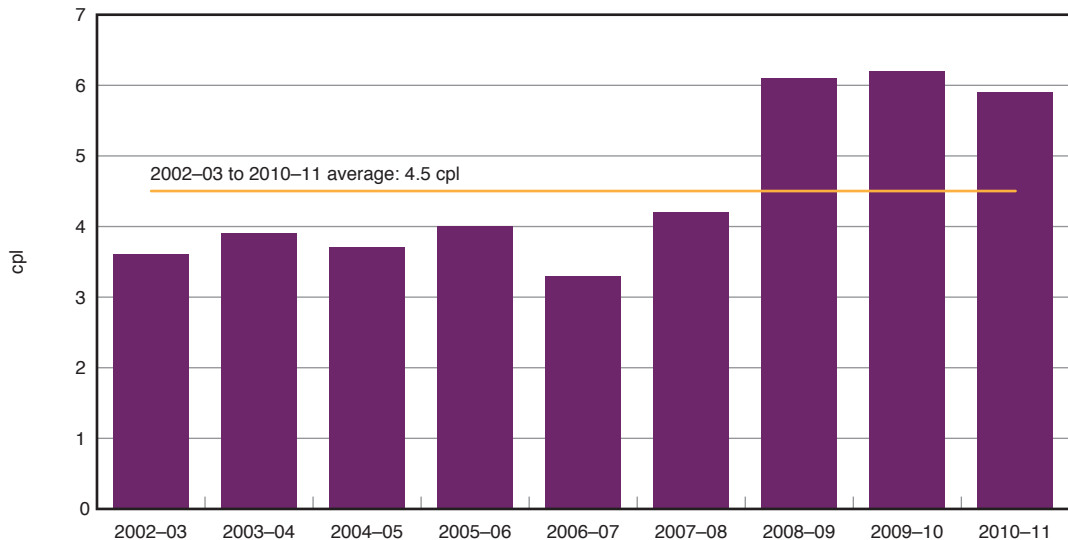
Average annual petrol retail prices, TGP and differences in Adelaide for 2002–03 to 2010–11 are presented in table E.7. The differences are also calculated in real terms relative to 2002–03 prices. The information is presented on a monthly basis for 2010–11 in table E.8. The differences for these periods are also presented in chart form (charts E.7 and E.8).

Table E.7 Average annual petrol retail prices, TGPs and differences, Adelaide: 2002–03 to 2010–11

	Average retail price cpl	Average TGP cpl	Difference cpl	Difference (real) cpl
2002–03	90.4	86.8	3.6	3.6
2003–04	93.0	89.1	3.9	3.8
2004–05	103.3	99.6	3.7	3.5
2005–06	123.7	119.7	4.0	3.7
2006–07	122.4	119.1	3.3	3.0
2007–08	135.6	131.4	4.2	3.6
2008–09	128.7	122.6	6.1	5.1
2009–10	123.6	117.4	6.2	5.1
2010–11	130.0	124.1	5.9	4.7
Average differences			4.5	4.0

The average annual difference over the nine years was 4.5 cpl. It ranged from a low of 3.3 cpl in 2006–07 to a high of 6.2 cpl in 2009–10.

Chart E.7 Average annual differences, petrol, Adelaide: 2002–03 to 2010–11



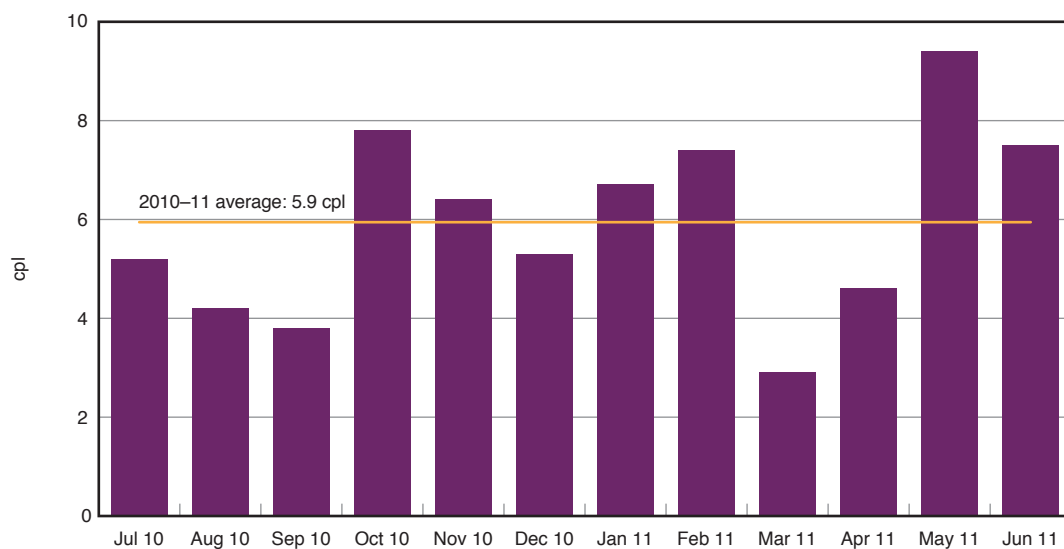
The **real** average annual difference over the nine years was 4.0 cpl. It ranged from a low of 3.0 cpl in 2006–07 to a high of 5.1 cpl in 2008–09 and 2009–10.

Table E.8 Average monthly petrol retail prices, TGPs and differences, Adelaide: July 2010 to June 2011

	Average retail price cpl	Average TGP cpl	Difference cpl
Jul 10	123.2	118.0	5.2
Aug 10	120.7	116.5	4.2
Sep 10	117.8	114.0	3.8
Oct 10	122.1	114.3	7.8
Nov 10	122.5	116.1	6.4
Dec 10	127.7	122.4	5.3
Jan 11	131.8	125.1	6.7
Feb 11	134.1	126.7	7.4
Mar 11	137.2	134.3	2.9
Apr 11	140.8	136.2	4.6
May 11	144.0	134.6	9.4
Jun 11	138.5	131.0	7.5
Average difference			5.9

The monthly difference over the year ranged from a low of 2.9 cpl in March 2011 to a high of 9.4 cpl in May 2011.

Chart E.8 Average annual differences, petrol, Adelaide: July 2010 to June 2011



Perth

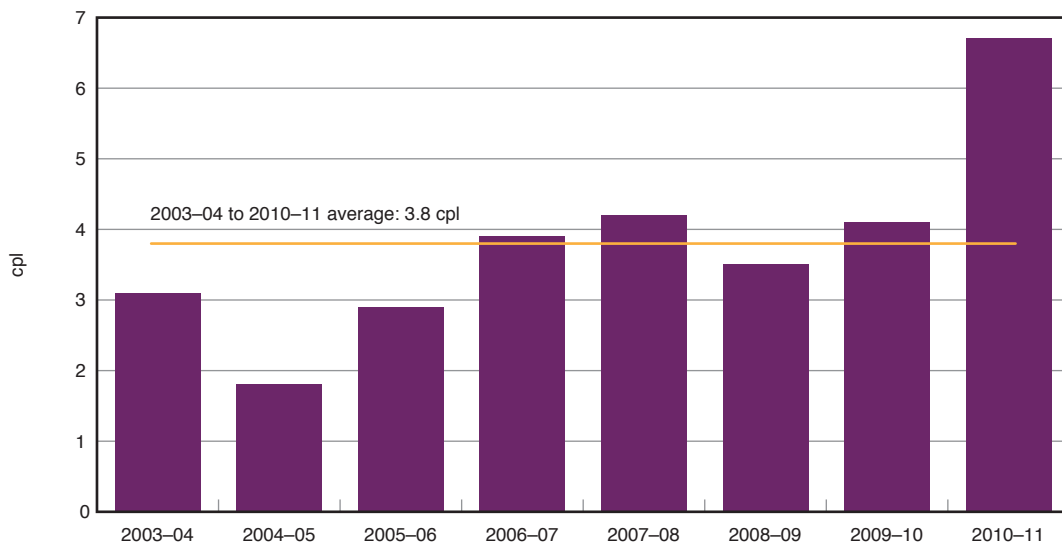
Average annual petrol retail prices, TGPs and differences in Perth for 2003–04 to 2010–11 are presented in table E.9.³⁰⁹ The differences are also calculated in real terms relative to 2002–03 prices. The information is presented on a monthly basis for 2010–11 in table E.10. The differences for these periods are also presented in chart form (charts E.9 and E.10).

Table E.9 Average annual petrol retail prices, TGPs and differences, Perth: 2003–04 to 2010–11

	Average retail price cpl	Average TGP cpl	Difference cpl	Difference (real) cpl
2003–04	92.3	89.2	3.1	3.0
2004–05	101.4	99.6	1.8	1.7
2005–06	122.2	119.3	2.9	2.6
2006–07	122.8	118.9	3.9	3.4
2007–08	135.8	131.6	4.2	3.6
2008–09	126.2	122.7	3.5	2.9
2009–10	122.3	118.2	4.1	3.3
2010–11	131.5	124.8	6.7	5.2
Average differences			3.8	3.2

The average annual difference over the eight years was 3.8 cpl. It ranged from a low of 1.8 cpl in 2004–05 to a high of 6.7 cpl in 2010–11.

Chart E.9 Average annual differences, petrol, Perth: 2003–04 to 2010–11



The **real** average annual difference over the eight years was 3.2 cpl. It ranged from a low of 1.7 cpl in 2004–05 to a high of 5.2 cpl in 2010–11.

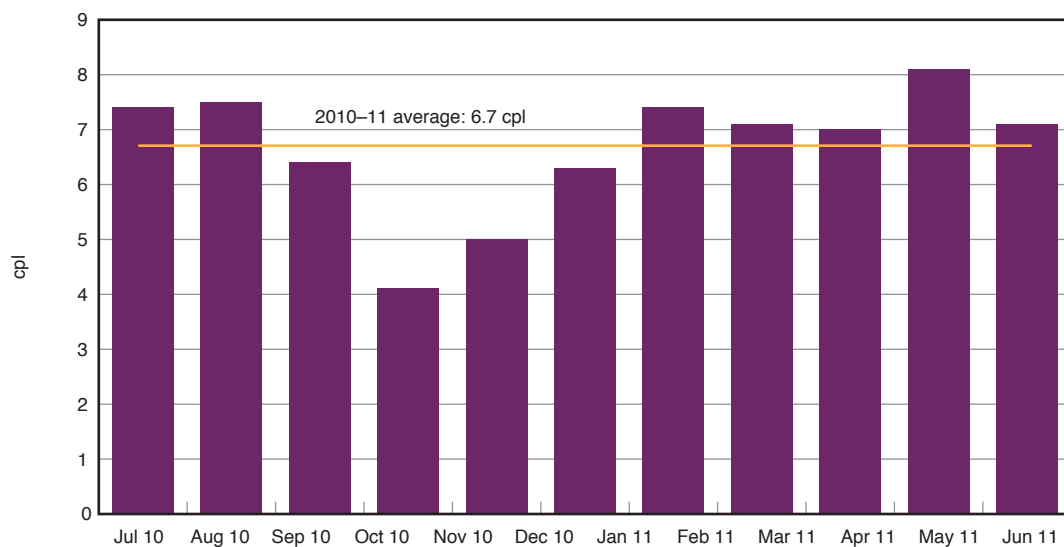
³⁰⁹ TGP data for Perth for 2002–03 is not available.

Table E.10 Average monthly petrol retail prices, TGPs and differences, Perth: July 2010 to June 2011

	Average retail price cpl	Average TGP cpl	Difference cpl
Jul 10	126.2	118.7	7.5
Aug 10	124.5	117.1	7.4
Sep 10	122.1	114.6	7.5
Oct 10	121.4	115.0	6.4
Nov 10	121.0	116.9	4.1
Dec 10	127.9	122.9	5.0
Jan 11	132.1	125.8	6.3
Feb 11	134.8	127.4	7.4
Mar 11	142.1	135.0	7.1
Apr 11	143.9	136.9	7.0
May 11	143.5	135.4	8.1
Jun 11	138.9	131.8	7.1
Average difference			6.7

The monthly difference over the year ranged from a low of 4.1 cpl in November 2010 to a high of 8.1 cpl in May 2011.

Chart E.10 Average annual differences, petrol, Perth: July 2010 to June 2011



Diesel

Five largest cities

Average annual diesel retail prices, TGPs and differences across the five largest cities for 2004–05 to 2010–11 are presented in table E.11.³¹⁰ The differences are also calculated in real terms relative to 2004–05 prices. The information is presented on a monthly basis for 2010–11 in table E.12.

The differences for these periods are also presented in chart form (charts E.11 and E.12).

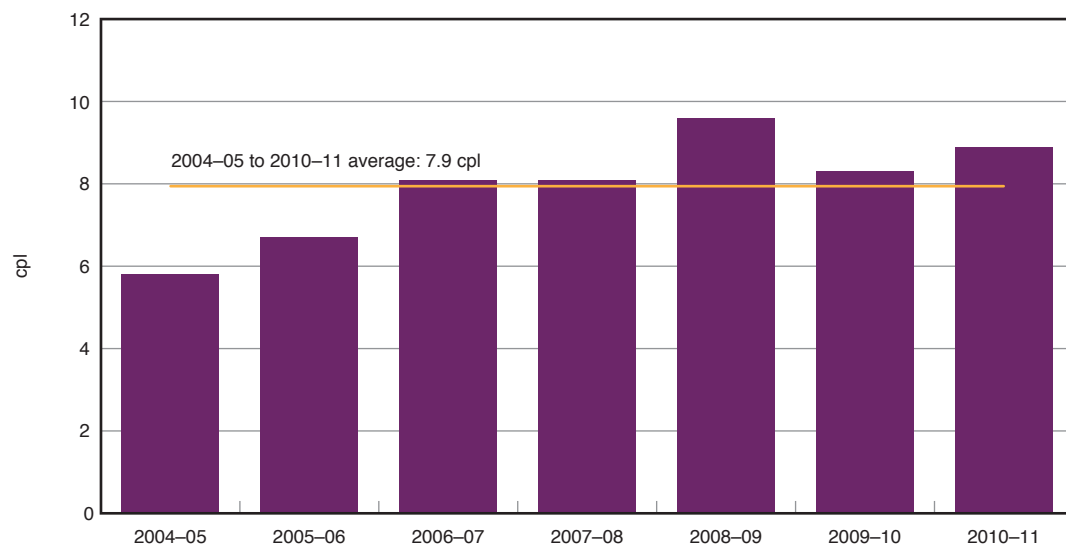
Table E.11 Average annual diesel retail prices, TGPs and differences, five largest cities: 2004–05 to 2010–11

	Average retail price cpl	Average TGP cpl	Difference cpl	Difference (real) cpl
2004–05	108.9	103.1	5.8	5.8
2005–06	130.3	123.6	6.7	6.5
2006–07	127.5	119.4	8.1	7.6
2007–08	147.2	139.1	8.1	7.4
2008–09	139.0	129.4	9.6	8.4
2009–10	124.5	116.2	8.3	7.1
2010–11	136.3	127.4	8.9	7.4
Average differences			7.9	7.2

Note: TGPs in Brisbane were adjusted downward before 2009–10 to reflect the Queensland Government retail fuel subsidy of around 9.2 cpl (including the GST).

The average annual difference over the seven years was 7.9 cpl. It ranged from a low of 5.8 cpl in 2004–05 to a high of 9.6 cpl in 2008–09.

Chart E.11 Average annual differences, diesel, five largest cities: 2004–05 to 2010–11



The **real** average annual difference over the seven years was 7.2 cpl. It ranged from a low of 5.8 cpl in 2004–05 to a high of 8.4 cpl in 2008–09.

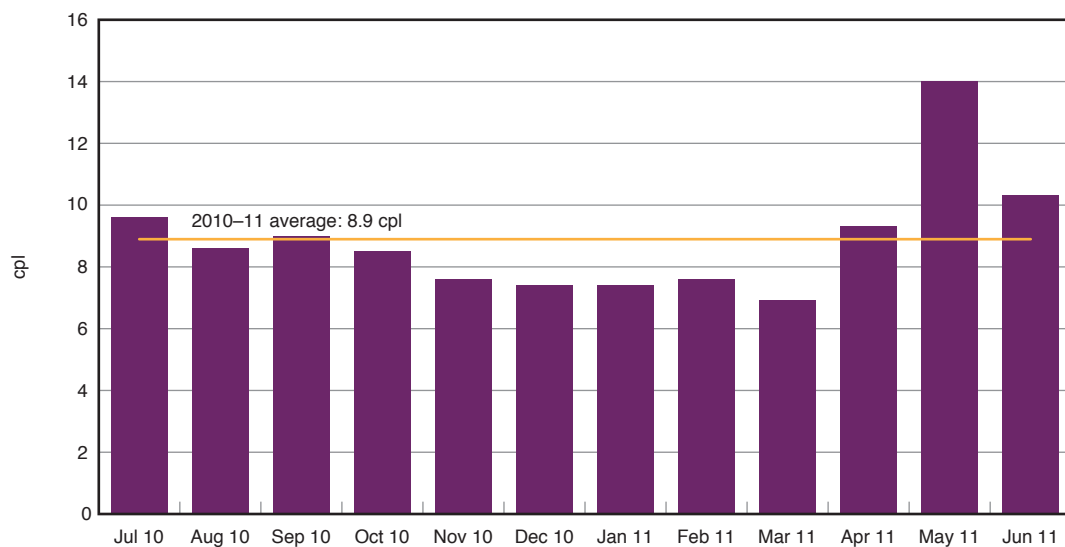
³¹⁰ Diesel TGP data is sourced from the AIP and is only available from January 2004.

Table E.12 Average monthly diesel retail prices, TGPs and differences, five largest cities: July 2010 to June 2011

	Average retail price cpl	Average TGP cpl	Difference cpl
Jul 10	129.2	119.6	9.6
Aug 10	127.7	119.1	8.6
Sep 10	126.0	117.0	9.0
Oct 10	125.7	117.2	8.5
Nov 10	126.5	118.9	7.6
Dec 10	130.5	123.1	7.4
Jan 11	133.7	126.3	7.4
Feb 11	138.6	131.0	7.6
Mar 11	148.4	141.5	6.9
Apr 11	153.2	143.9	9.3
May 11	150.3	136.3	14.0
Jun 11	145.8	135.5	10.3
Average difference			8.9

The monthly difference over the year ranged from a low of 6.9 cpl in March 2011 to a high of 14.0 cpl in May 2011.

Chart E.12 Average monthly differences, diesel, five largest cities: July 2010 to June 2011



Sydney

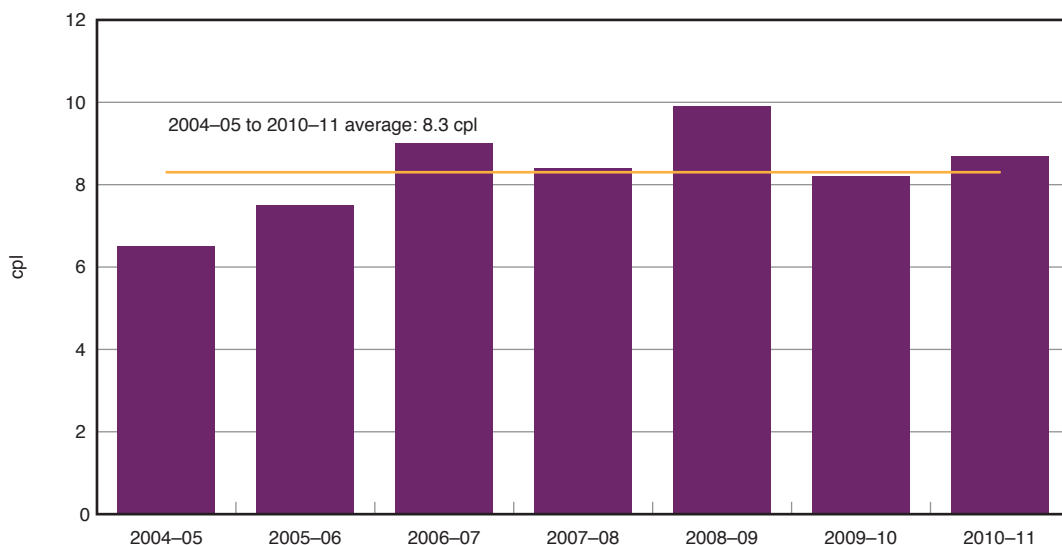
Average annual diesel retail prices, TGPs and differences in Sydney for 2004–05 to 2010–11 are presented in table E.13. The differences are also calculated in real terms relative to 2004–05 prices. The information is presented on a monthly basis for 2010–11 in table E.14. The differences for these periods are also presented in chart form (charts E.13 and E.14).

Table E.13 Average annual retail prices, TGPs and differences, Sydney: 2004–05 to 2010–11

	Average retail price cpl	Average TGP cpl	Difference cpl	Difference (real) cpl
2004–05	111.7	105.2	6.5	6.5
2005–06	132.9	125.4	7.5	7.3
2006–07	130.5	121.5	9.0	8.5
2007–08	149.6	141.2	8.4	7.7
2008–09	141.2	131.3	9.9	8.8
2009–10	124.3	116.1	8.2	7.1
2010–11	136.3	127.6	8.7	7.4
Average differences			8.3	7.6

The average annual difference over the seven years was 8.3 cpl. It ranged from a low of 6.5 cpl in 2004–05 to a high of 9.9 cpl in 2008–09.

Chart E.13 Average annual differences, diesel, Sydney: 2004–05 to 2010–11



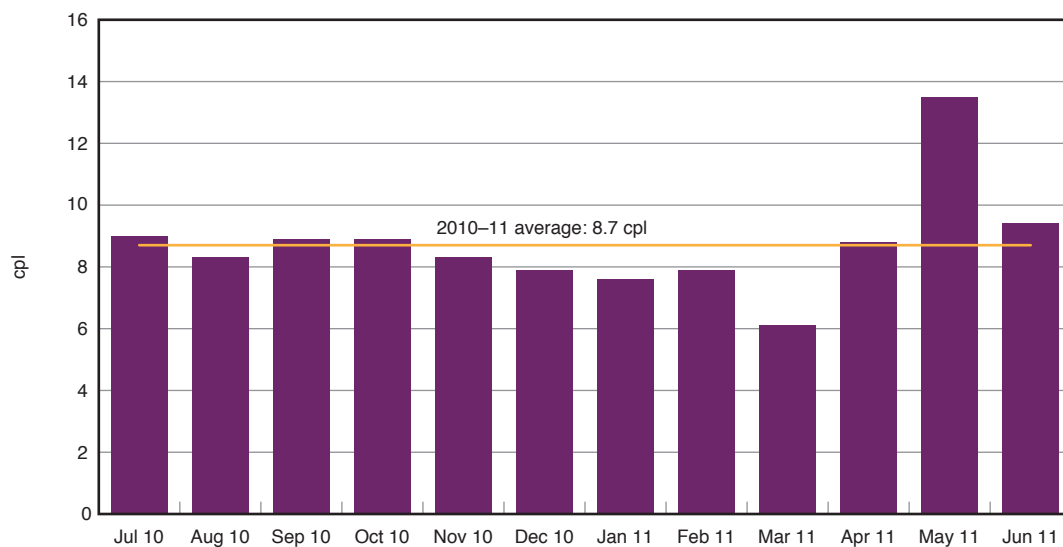
The **real** average annual difference over the seven years was 7.6 cpl. It ranged from a low of 6.5 cpl in 2004–05 to a high of 8.8 cpl in 2008–09.

Table E.14 Average monthly diesel retail prices, TGPs and differences, Sydney: July 2010 to June 2011

	Average retail price cpl	Average TGP cpl	Difference cpl
Jul 10	128.6	119.6	9.0
Aug 10	127.4	119.1	8.3
Sep 10	125.9	117.0	8.9
Oct 10	126.1	117.2	8.9
Nov 10	127.3	119.0	8.3
Dec 10	131.1	123.2	7.9
Jan 11	134.1	126.5	7.6
Feb 11	139.3	131.4	7.9
Mar 11	148.0	141.9	6.1
Apr 11	153.0	144.2	8.8
May 11	150.1	136.6	13.5
Jun 11	145.2	135.8	9.4
Average difference			8.7

The monthly difference over the year ranged from a low of 6.1 cpl in March 2011 to a high of 13.5 cpl in May 2011.

Chart E.14 Average monthly differences, diesel, Sydney: July 2010 to June 2011



Melbourne

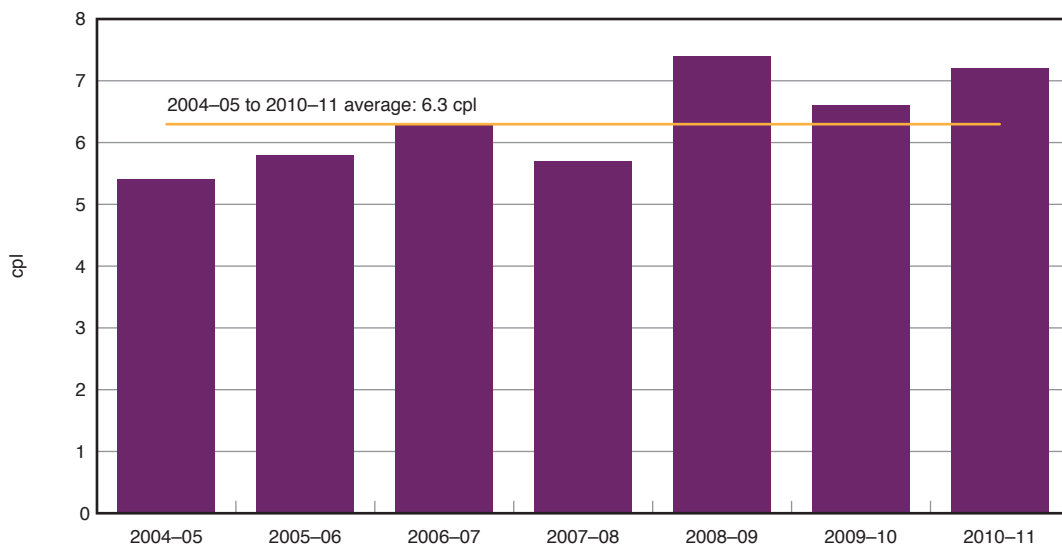
Average annual diesel retail prices, TGP and differences in Melbourne for 2004–05 to 2010–11 are presented in table E.15. The differences are also calculated in real terms relative to 2004–05 prices. The information is presented on a monthly basis for 2010–11 in table E.16. The differences for these periods are also presented in chart form (charts E.15 and E.16).

Table E.15 Average annual diesel retail prices, TGPs and differences, Melbourne: 2004–05 to 2010–11

	Average retail price cpl	Average TGP cpl	Difference cpl	Difference (real) cpl
2004–05	109.0	103.6	5.4	5.4
2005–06	129.7	123.9	5.8	5.6
2006–07	126.1	119.8	6.3	6.0
2007–08	146.1	140.4	5.7	5.2
2008–09	138.2	130.8	7.4	6.6
2009–10	122.3	115.7	6.6	5.7
2010–11	133.9	126.7	7.2	6.1
Average differences			6.3	5.8

The average annual difference over the seven years was 6.3 cpl. It ranged from a low of 5.4 cpl in 2004–05 to a high of 7.4 cpl in 2008–09.

Chart E.15 Average annual differences, diesel, Melbourne: 2004–05 to 2010–11



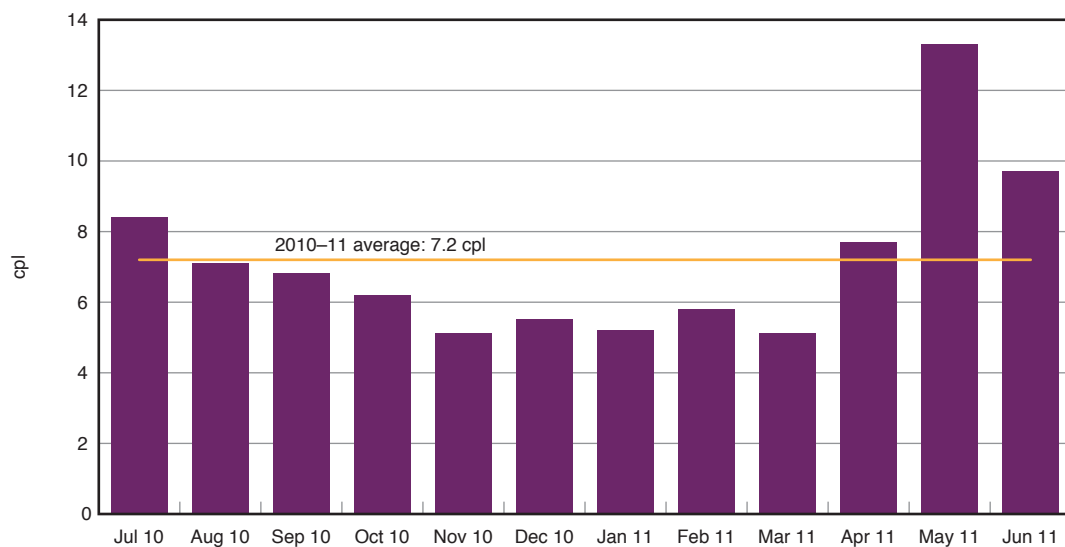
The **real** average annual difference over the seven years was 5.8 cpl. It ranged from a low of 5.2 cpl in 2007–08 to a high of 6.6 cpl in 2008–09.

Table E.16 Average monthly diesel retail prices, TGPs and differences, Melbourne: July 2010 to June 2011

	Average retail price cpl	Average TGP cpl	Difference cpl
Jul 10	127.5	119.1	8.4
Aug 10	125.5	118.4	7.1
Sep 10	123.2	116.4	6.8
Oct 10	122.8	116.6	6.2
Nov 10	123.4	118.3	5.1
Dec 10	128.0	122.5	5.5
Jan 11	130.8	125.6	5.2
Feb 11	136.2	130.4	5.8
Mar 11	146.0	140.9	5.1
Apr 11	150.9	143.2	7.7
May 11	148.8	135.5	13.3
Jun 11	144.4	134.7	9.7
Average difference			7.2

The monthly difference over the year ranged from a low of 5.1 cpl in November 2010 and March 2011 to a high of 13.3 cpl in May 2011.

Chart E.16 Average monthly differences, diesel, Melbourne: July 2010 to June 2011



Brisbane

Average annual diesel retail prices, TGPs and differences in Brisbane for 2004–05 to 2010–11 are presented in table E.17. The differences are also calculated in real terms relative to 2004–05 prices. The information is presented on a monthly basis for 2010–11 in table E.18. The differences for these periods are also presented in chart form (charts E.17 and E.18).

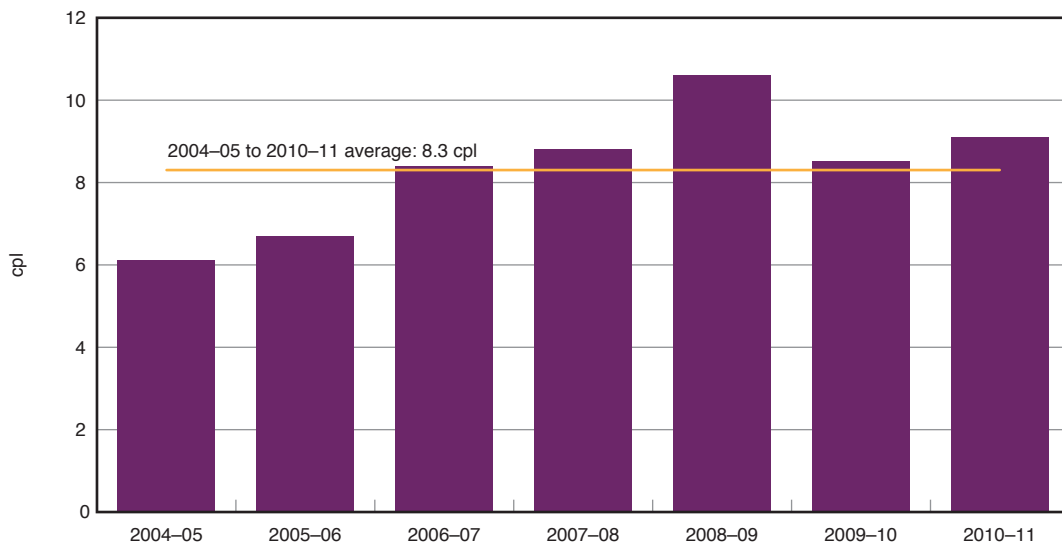
Table E.17 Average annual diesel retail prices, TGPs and differences, Brisbane: 2004–05 to 2010–11

	Average retail price cpl	Average TGP cpl	Difference cpl	Difference (real) cpl
2004–05	102.0	95.9	6.1	6.1
2005–06	123.5	116.8	6.7	6.5
2006–07	121.0	112.6	8.4	7.9
2007–08	140.5	131.7	8.8	7.9
2008–09	132.5	121.9	10.6	9.2
2009–10	124.4	115.9	8.5	7.2
2010–11	136.2	127.1	9.1	7.5
Average differences			8.3	7.5

Note: TGPs in Brisbane were adjusted downward before 2009–10 to reflect the Queensland Government retail fuel subsidy of around 9.2 cpl (including the GST).

The average annual difference over the seven years was 8.3 cpl. It ranged from a low of 6.1 cpl in 2004–05 to a high of 10.6 cpl in 2008–09.

Chart E.17 Average annual differences, diesel, Brisbane: 2004–05 to 2010–11



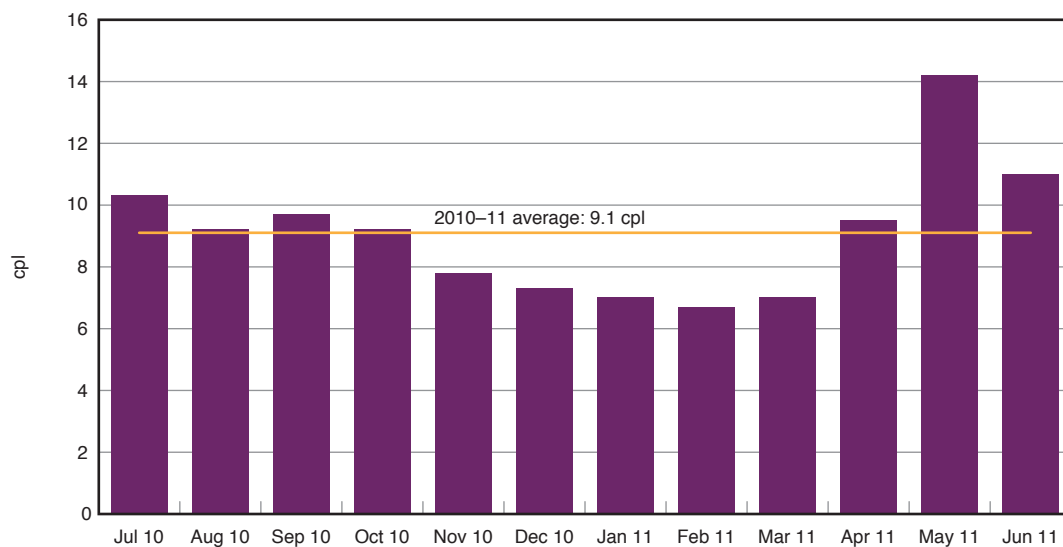
The **real** average annual difference over the seven years was 7.5 cpl. It ranged from a low of 6.1 cpl in 2004–05 to a high of 9.2 cpl in 2008–09.

Table E.18 Average monthly diesel retail prices, TGPs and differences, Brisbane: July 2010 to June 2011

	Average retail price cpl	Average TGP cpl	Difference cpl
Jul 10	129.6	119.3	10.3
Aug 10	128.0	118.8	9.2
Sep 10	126.5	116.8	9.7
Oct 10	126.2	117.0	9.2
Nov 10	126.5	118.7	7.8
Dec 10	130.2	122.9	7.3
Jan 11	133.0	126.0	7.0
Feb 11	137.5	130.8	6.7
Mar 11	148.3	141.3	7.0
Apr 11	153.1	143.6	9.5
May 11	150.2	136.0	14.2
Jun 11	146.2	135.2	11.0
Average difference			9.1

The monthly difference over the year ranged from a low of 6.7 cpl in February 2011 to a high of 14.2 cpl in May 2011.

Chart E.18 Average monthly differences, diesel, Brisbane: July 2010 to June 2011



Adelaide

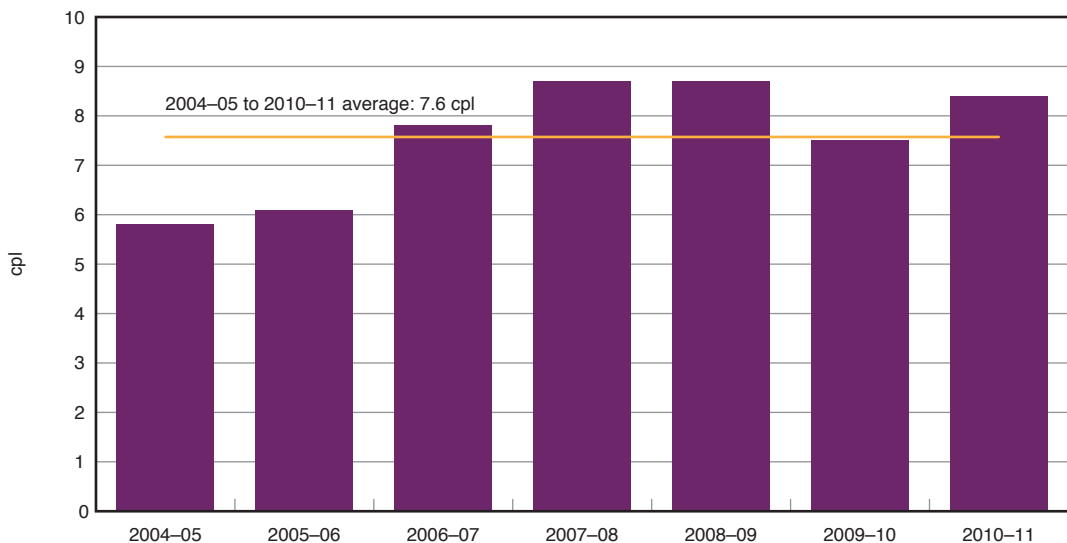
Average annual diesel retail prices, TGPs and differences in Adelaide for 2004–05 to 2010–11 are presented in table E.19. The differences are also calculated in real terms relative to 2004–05 prices. The information is presented on a monthly basis for 2010–11 in table E.20. The differences for these periods are also presented in chart form (charts E.19 and E.20).

Table E.19 Average annual diesel retail prices, TGPs and differences, Adelaide: 2004–05 to 2010–11

	Average retail price cpl	Average TGP cpl	Difference cpl	Difference (real) cpl
2004–05	110.9	105.1	5.8	5.8
2005–06	132.4	126.3	6.1	5.9
2006–07	129.8	122.0	7.8	7.4
2007–08	149.7	141.0	8.7	8.0
2008–09	140.1	131.4	8.7	7.7
2009–10	123.8	116.3	7.5	6.5
2010–11	135.8	127.4	8.4	7.1
Average differences			7.6	6.9

The average annual difference over the seven years was 7.6 cpl. It ranged from a low of 5.8 cpl in 2004–05 to a high of 8.7 cpl in 2007–08 and 2008–09.

Chart E.19 Average annual differences, diesel, Adelaide: 2004–05 to 2010–11



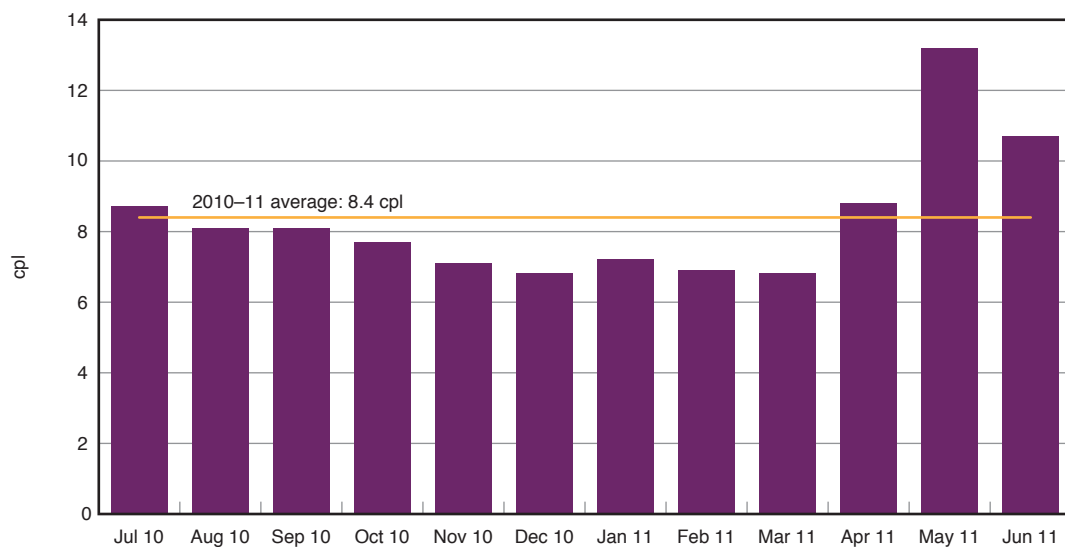
The **real** average annual difference over the seven years was 6.9 cpl. It ranged from a low of 5.8 cpl in 2004–05 to a high of 8.0 cpl in 2007–08.

Table E.20 Average monthly diesel retail prices, TGPs and differences, Adelaide: July 2010 to June 2011

	Average retail price cpl	Average TGP cpl	Difference cpl
Jul 10	128.4	119.7	8.7
Aug 10	127.3	119.2	8.1
Sep 10	125.3	117.2	8.1
Oct 10	125.1	117.4	7.7
Nov 10	126.2	119.1	7.1
Dec 10	130.1	123.3	6.8
Jan 11	133.4	126.2	7.2
Feb 11	137.9	131.0	6.9
Mar 11	148.3	141.5	6.8
Apr 11	152.6	143.8	8.8
May 11	149.4	136.2	13.2
Jun 11	146.1	135.4	10.7
Average difference			8.4

The monthly difference over the year ranged from a low of 6.8 cpl in December 2010 and March 2011 to a high of 13.2 cpl in May 2011.

Chart E.20 Average monthly differences, diesel, Adelaide: July 2010 to June 2011



Perth

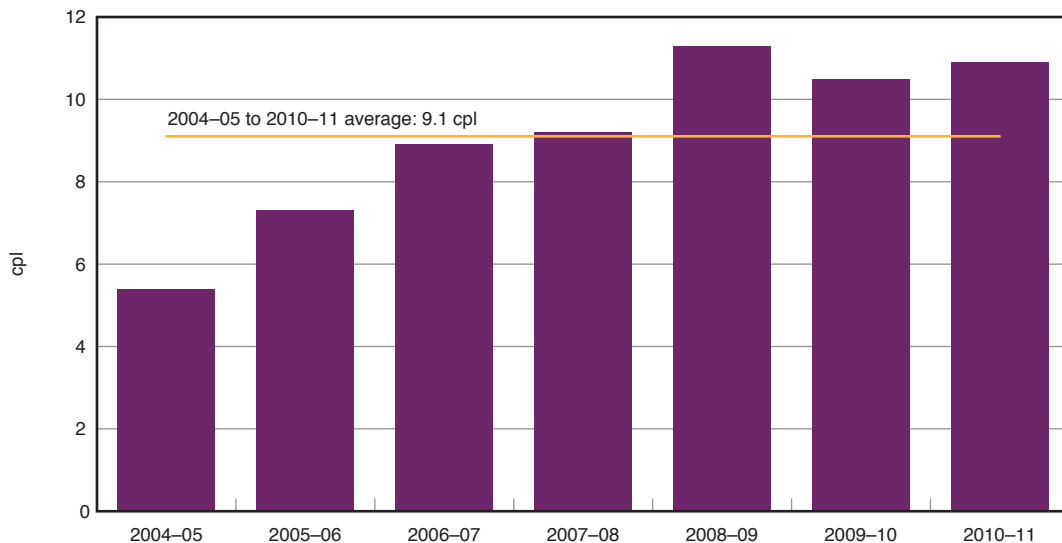
Average annual diesel retail prices, TGPs and differences in Perth for 2004–05 to 2010–11 are presented in table E.21. The differences are also calculated in real terms relative to 2004–05 prices. The information is presented on a monthly basis for 2010–11 in table E.22. The differences for these periods are also presented in chart form (charts E.21 and E.22).

Table E.21 Average annual diesel retail prices, TGPs and differences, Perth: 2004–05 to 2010–11

	Average retail price cpl	Average TGP cpl	Difference cpl	Difference (real) cpl
2004–05	111.0	105.6	5.4	5.4
2005–06	132.8	125.5	7.3	7.0
2006–07	130.3	121.4	8.9	8.2
2007–08	150.1	140.9	9.2	8.2
2008–09	142.7	131.4	11.3	9.8
2009–10	127.4	116.9	10.5	8.9
2010–11	139.0	128.1	10.9	8.9
Average differences			9.1	8.1

The average annual difference over the seven years was 9.1 cpl. It ranged from a low of 5.4 cpl in 2004–05 to a high of 11.3 cpl in 2008–09.

Chart E.21 Average annual differences, diesel, Perth: 2004–05 to 2010–11



The **real** average annual difference over the seven years was 8.1 cpl. It ranged from a low of 5.4 cpl in 2004–05 to a high of 9.8 cpl in 2008–09.

Table E.22 Average monthly diesel retail prices, TGPs and differences, Perth: July 2010 to June 2011

	Average retail price cpl	Average TGP cpl	Difference cpl
Jul 10	131.6	120.3	11.3
Aug 10	130.4	119.7	10.7
Sep 10	129.0	117.7	11.3
Oct 10	128.5	118.0	10.5
Nov 10	129.0	119.8	9.2
Dec 10	133.2	123.8	9.4
Jan 11	137.0	127.0	10.0
Feb 11	142.0	131.7	10.3
Mar 11	151.5	142.3	9.2
Apr 11	156.2	144.6	11.6
May 11	153.0	137.1	15.9
Jun 11	147.1	136.2	10.9
Average difference			10.9

The monthly difference over the year ranged from a low of 9.2 cpl in November 2010 and March 2011 to a high of 15.9 cpl in May 2011.

Chart E.22 Average monthly differences, diesel, Perth: July 2010 to June 2011

